

# Coastal California Data Merge Project

Report Produced for the National Oceanic  
and Atmospheric Administration (NOAA)

NOAA Contract: EA133C-11-CQ-0007

Task Order Number: 11

Report Date: 10/31/2013

SUBMITTED BY:

**Dewberry**

1000 North Ashley Drive  
Suite 801  
Tampa, FL 33602  
813.225.1325

SUBMITTED TO:

**NOAA Coastal Services Center**  
2234 South Hobson Ave  
Charleston, SC 29405

## Table of Contents

Executive Summary .....	3
The Project Team .....	3
Survey Area.....	3
Date of Survey .....	3
Datum Reference.....	3
LiDAR Vertical Accuracy .....	4
Project Deliverables .....	4
Project Tiling Footprint .....	4
LiDAR Processing & Qualitative Assessment .....	6
Data Classification and Editing.....	6
Creating Seamlines Between Different Datasets .....	7
Topographic-Bathymetric Best Fit Seamline.....	7
Acoustic-Acoustic Best Fit Seamline.....	8
Bathymetric-Acoustic Best Fit Seamline.....	8
Reclassification of Topographic Data .....	8
Reclassification of Bathymetric Data.....	8
Reclassification of Acoustic Data .....	9
LiDAR Analysis .....	9
DEM Production & Qualitative Assessment.....	14
DEM Production Methodology .....	15
Smoothing Methodology .....	15
Creation of Void Mask .....	16
DEM Analysis .....	16
DEM Qualitative Assessment.....	20
DEM QA/QC Checklist .....	20
Generation of the Vertical Accuracy Layer .....	21
Vector Layer.....	21
Raster Layer.....	21
Appendix A.....	22
Production Block 1a .....	22
Production Block 1b .....	25
Production Block 2a.....	31
Production Block 2b.....	32
Production Block 3.....	42
Production Block 4.....	48

## Executive Summary

The primary purpose of this project is to merge recently collected topographic, bathymetric, and acoustic data along the California coastline from approximately the 10 meter elevation contour out to California's 3 mile state waters boundary. The inland boundary will include the NOAA/Ocean Protection Council (OPC) "all valid data" dataset based on a shapefile provided by NOAA Coastal Services Center (CSC).

Following an extensive data inventory, topographic, bathymetric, and acoustic data sources were obtained for use in the merge. Topographic LiDAR data was provided by NOAA, collected for the California Coastal Mapping Project (CCMP). Bathymetric LiDAR data was provided by the Joint Airborne LiDAR Bathymetry Technical Center of Expertise (JALBTCX), also collected for the CCMP. Multibeam Acoustic data was provided by the California Seafloor Mapping Program (CSMP): Ocean Protection Council, NOAA, and USGS where available.

Data delivery for California is divided into 4 production blocks. This delivery includes all production blocks.

## THE PROJECT TEAM

Dewberry served as the prime contractor for the project and subcontracted with Fugro EarthData for a portion of this task order. Dewberry was responsible for acquiring and preparing all sources of the topographic, bathymetric, and acoustic data, developing best-fit seamlines between data types, reclassifying the LAS data, generating and smoothing the final DEM, creating the final vertical accuracy and data void layers, and performing final quality assurance.

Fugro Earthdata was tasked with processing and tiling of the acoustic data in production blocks 3 and 4, as well as a portion of the bathymetric data. LAS data was reclassified accordingly into final and overlap classes. Fugro Earthdata generated best-fit seamlines between unique acoustic survey data and in areas where overlapping bathymetric was present. Within the same survey group, best resolution data was used and no best-fit seamlines were produced.

## SURVEY AREA

The full project area includes 4 production blocks, spanning 6,145 miles, and includes 17 counties along the coastline.

## DATE OF SURVEY

The LiDAR aerial acquisition dates vary with each data source. Information, including acquisition dates, is available for each data source used for this delivery and can be found in the data inventory, named Full\_DataInventory.xlsx, delivered to NOAA CSC. A file geodatabase (FGDB) has also been included to show the spatial extents of all acoustic data used.

## DATUM REFERENCE

Data produced for the Coastal California Data Merge Project were delivered in the following reference system.

**Horizontal Datum:** The horizontal datum for the project is North American Datum of 1983 (NAD 83) NSRS2007

**Vertical Datum:** The Vertical datum for the project is North American Vertical Datum of 1988 (NAVD88)

**Coordinate Systems:** Universal Transverse Mercator (UTM) Zone 10 North and Universal Transverse Mercator (UTM) Zone 11 North, where appropriate  
**Units:** Horizontal units are in meters, vertical units are in meters  
**Geoid Model:** Geoid 09

## LIDAR VERTICAL ACCURACY

LiDAR vertical accuracy varies with each data source. Additional vertical accuracy testing was not performed on the data and was not required by this task order. Using the information from the metadata, a vertical accuracy layer was generated in both raster and vector format. Accuracy values are represented as RMSE<sub>z</sub> where available.

Data Source	Reported Vertical Accuracy
NOAA Topographic LiDAR	4.8 cm RMSE <sub>z</sub>
JALBTCX Bathymetric LiDAR	15 cm RMSE <sub>z</sub>
Multibeam Acoustic Data	Varies by source or not available

Table 1: Accuracy values of source data as found in the respective metadata.

Where vertical accuracy is unavailable, it was identified as “undefined” in the vector layer and as -9999 in the raster layer. Uncertainty values provided in the acoustic Bathymetry Attributed Grid (BAG) data were generalized in the vector layer.

## PROJECT DELIVERABLES

The deliverables for the project are listed below.

1. Merged Point Data in LAS v1.2 format
2. Smoothed with Interpolated Voids Merged DEM in ERDAS IMG format (Tiled)
3. Smoothed with Voids Merged DEM in ERDAS IMG format (Tiled)
4. Vertical Accuracy Layer in raster (Tiled) and vector (shapefile) formats
5. Void Mask in raster (Tiled) and vector (shapefile) formats
6. Ancillary Data (File GDB)
  - o Seamlines (topo/bathy and bathy/acoustic)
  - o Smoothed Areas (topo/bathy and bathy/acoustic)
  - o Tile grid of delivered tiles
  - o Acoustic boundaries
7. FGDC Compliant Metadata for DEM, Vertical Accuracy layer, and Void Mask
8. Source Data Used (Microsoft Excel spreadsheet)
9. Acoustic Source extent boundaries (File GDB)
10. Project Boundary
11. Project Report

## PROJECT TILING FOOTPRINT

Eight thousand and eighteen (8018) LAS tiles are included in all of the Coastal California Data Merge Project area. Eight thousand and forty (8040) tiles are included per DEM, vertical accuracy, and void mask rasters. This discrepancy is attributed to the fact that in areas of large voids, no LAS data points are available. However, in the DEMs, these void areas are interpolated and available for tiling. In the DEMs with voids, these tiles are comprised of full NoData values. Each tile’s extent is 1500m x 1500m. A complete list of delivered tiles can be found in Appendix A.

Ten (10) tiles that intersect the project boundary were completely removed from final delivery. These tiles do not have any valid LAS points and also do not have any interpolated DEM values. They are found on the very edges of the project boundary. These 10 tiles are listed below:

Tile Name	
11SMS275975	10SFE840000
11SMS275990	10SFE825285
11SMS500795	10SEG235865
11SMT260005	10TCL885150
11SLT690575	10TCM975125

Table 2: List of tiles removed from delivery



Figure 1: Coastal California Project Boundary



Figure 2: Coastal California production blocks

## LiDAR Processing & Qualitative Assessment

### DATA CLASSIFICATION AND EDITING

All data was initially processed using GeoCue and TerraScan software by Dewberry. The initial step is the setup of the GeoCue project, which is done by importing a project defined tile boundary index encompassing the entire project area. LAS points from the topographic data and ASCII files from the bathymetric and acoustic data sources were imported into the GeoCue project, converted to LAS 1.2, and tiled to the production tile grid.

Topographic data was reviewed along the coastline for misclassified ground. Offshore islands were added back to the ground (class 2) where necessary. The shoreline ground was also extended in some areas to meet with the bathymetric data.

Bathymetric data was modified to remove miscellaneous artifacts located above the water line – docks, piers, boats, etc. This is done through TerraScan using absolute elevation reclassification to class 21 (Non-submerged Bathymetry). Tiles are then reviewed for additional artifacts and/or aggressive classification. Bathymetric-acoustic overlap data was moved to class 23 (Ignored Submerged Bathymetry/Overlap).

ASCII files from the acoustic BAG data were transformed from mean lower low water (MLLW) to NAVD88 using NOAA's VDatum software (version 2.3.5) prior to import. Acoustic heights (z) were also converted to soundings (-z) for project consistency. Other sources of acoustic data were modified as necessary to remain consistent with the rest of the project data. Acoustic-acoustic overlap data was reclassified to class 26 (Ignored Multibeam Acoustic/Overlap).

For the final merged LAS product, the following classification codes were used:

- Class 1 = Unclassified (Topography)
- Class 2 = Ground (Topography)
- Class 7 = Noise (Topography)
- Class 9 = Water (Topography)
- Class 10 = Mud Flats (Topography)
- Class 12 = Overlap (Topography)
- Class 21 = Non-submerged Bathymetry
- Class 22 = Submerged Bathymetry
- Class 23 = Ignored Submerged Bathymetry / Overlap
- Class 25 = Multibeam Acoustic
- Class 26 = Ignored Multibeam Acoustic / Overlap

Final LAS data points were not clipped to the project boundary. Fully classified LAS tiles have been provided.

## **CREATING SEAMLINES BETWEEN DIFFERENT DATASETS**

The creation of seamlines between the different datasets is necessary in order to properly reclassify areas of overlap. The seamline is also the starting point for the creation of the buffers used for smoothing the final DEM. Best fit seamlines were generated for the following areas:

- Topographic/Bathymetric boundary
- Acoustic/Acoustic survey boundary
- Bathymetric/Acoustic boundary

Within an acoustic survey, if multiple resolution data was available, the best resolution was prioritized. The extent of each resolution was generated in Global Mapper. In areas of overlap, the extent of the best resolution data was used to classify acoustic data to class 25 (Multibeam Acoustic). Remaining LAS points were moved to class 26 (Ignored Multibeam Acoustic/Overlap).

### **Topographic-Bathymetric Best Fit Seamline**

All breaklines provided by NOAA were merged into a single polygon feature class. This became the foundation of the initial seamline. Areas containing both topographic and bathymetric data along the coastline were reviewed on a tile-by-tile basis using difference rasters. Because the topographic data has better horizontal resolution and vertical accuracy than the bathymetric data, it generally took priority over bathymetric data in overlap areas. However, in some areas a smoother transition between the topographic and bathymetric LiDAR datasets could be achieved by modifying the extent of the topographic data in favor of the bathymetric data. In these cases, the breakline was adjusted accordingly.



The final polygon feature class was used for reclassification of LAS points in TerraScan. The polygon was converted to a polyline in Arc and clipped to the extent of the coastal shoreline. This final polyline was also used as basis for the creation of the DEM smoothing buffers.

#### **Acoustic-Acoustic Best Fit Seamline**

Extent boundaries for each acoustic survey were generated in Global Mapper and used as a foundation for a best fit line. Difference rasters were produced along survey boundaries. Using the difference rasters as a guide, the extents were modified in areas of overlap to create the smoothest transition from one survey to the next. The final polygon boundaries were used for reclassification of acoustic data points.

#### **Bathymetric-Acoustic Best Fit Seamline**

The bathymetric-acoustic seamline was generated using the same methodology as the acoustic overlap seamline above. Difference rasters were produced along the acoustic and bathymetric boundary. The polygon extent from the acoustic data was modified along this boundary to create a best fit seamline. The final polygon was used for reclassification of bathymetric and acoustic data points. The polygon was converted to a polyline in Arc and used as basis for the creation of the DEM smoothing buffers.

### **RECLASSIFICATION OF TOPOGRAPHIC DATA**

Reclassification of offshore islands and pinnacles is a critical component to the success of the final merged product. Tiles within 100 meters of the coastal shoreline were identified for manual reclassification. Each tile was brought into TerraScan and a temporary surface model was created from the topographic ground points (class 2). Using aerial imagery as a guide, the coastline was examined for any exposed islands that could be reclassified to ground (class 2). Once located, LAS points were reclassified from water (class 9), unclassified (class 1), or, in rare cases, bathymetry (class 22) to ground.

In topographic-bathymetric overlap areas where the seamline was modified, any affected topographic points were moved from ground (class 2) to unclassified (class 1) in TerraScan using the topographic-bathymetric seamline polygon feature class. After manual classification was complete, LAS tiles were loaded into Global Mapper for initial QC.

### **RECLASSIFICATION OF BATHYMETRIC DATA**

In areas of overlap where topographic data was given priority over bathymetric data, overlapping bathymetric points were moved to class 21 (non-submerged bathymetry). This was performed in TerraScan using the final seamline polygon.

A minimum of three (3) data points within a 15 meter radius is required for inclusion in the DEM. An extent polygon is needed to accomplish this task. Topographic ground points (class 2) and bathymetric points (class 22) were converted to a masspoint feature class in Arc. Ground points from the topographic data were purposefully included here. The assumption is that if there is a bathymetric point within 15 meters of two topographic ground points, it should be used in the DEM. If ground points were excluded from consideration, nearshore bathymetric points may be incorrectly excluded as well. The masspoints were used as the input in the Aggregate Points tool in Arc with a set distance of 15m.

After the final extent polygons were generated, class 22 bathymetric points not within these polygons were moved to class 23 (ignored submerged bathymetry/overlap) in TerraScan. Points outside the extent polygon remained in class 21/22. Finally, to remove above-ground artifacts from the bathymetric data, all class 22 points with elevations above +1m were reassigned to



class 21 using an automated process in TerraScan. This removed docks, piers, bridges, and other miscellaneous artifacts from the point cloud. Bathymetric data between 0 – 1m elevation were left in class 22 to avoid classifying out too many data points in the nearshore areas. Bathymetric elevations between 0 - 1m were evaluated on a tile-by-tile basis and moved to class 21 if necessary.

In areas where bathymetric data overlapped acoustic data, the bathymetric-acoustic seamline boundary was used to reclassify overlapping bathymetric points to class 23.

## **RECLASSIFICATION OF ACOUSTIC DATA**

Each survey of the acoustic data was reclassified from temporary class codes to the final class 25 (multibeam acoustic) and class 26 (acoustic overlap). This process was automated in TerraScan. For the BAG data, the best resolution data was used and no best fit line was produced between resolutions. In Terrascan, voids in higher resolution acoustic BAG data were filled with available lower resolution BAG data. This process results in a merged LAS point cloud for each survey location utilizing the best resolution BAG data. Ignored and overlap points were classified into class 26. QC of the filled datasets was performed to check for excessize stepping, surface quality (artificial cliffs and ridges), and completeness.

Between surveys, the best fit seamline was used for reclassification. Final acoustic data was reviewed to ensure aggressive classification of data did not occur.

## **LIDAR ANALYSIS**

After the reclassification of the data was finalized, all LAS data was merged in GeoCue to produce the final tiled LAS. Files were QCed for correct header, projection, and naming conventions.

The following observations were made during LiDAR processing:

1. **File Format:** The LAS files are verified to meet project specifications. The LAS files for the NOAA Coastal California Data Merge project conform to the specifications outlined below.
  - Format
    - LAS format 1.2
    - Point data record format 1
    - GPS Standard Time (where available)
  - Classification scheme
    - Class 1 = Unclassified
    - Class 2 = Ground
    - Class 7 = Noise
    - Class 9 = Water
    - Class 10 = Mud Flats
    - Class 12 = Overlap
    - Class 21 = Non-submerged Bathymetry
    - Class 22 = Submerged Bathymetry
    - Class 23 = Ignored Submerged Bathymetry / Overlap
    - Class 25 = Multibeam Acoustic
    - Class 26 = Ignored Multibeam Acoustic / Overlap

- Projection
  - Datum: North American Datum 1983, NSRS 2007
  - Projected Coordinate System: UTM Zone 10 North, UTM Zone 11 North
  - Horizontal Units: Meters
  - Vertical Datum: North American Vertical Datum 1988, Geoid 09
  - Vertical Units: Meters
  
- 2. Submerged Artifacts: Most submerged artifacts were not removed from the LAS. In order to treat features consistently across the project area, when in doubt regarding the accuracy of the data points, the points would be considered a valid underwater feature. In cases where features seem inaccurately portrayed, these points were moved to the overlap class. An example is shown below.

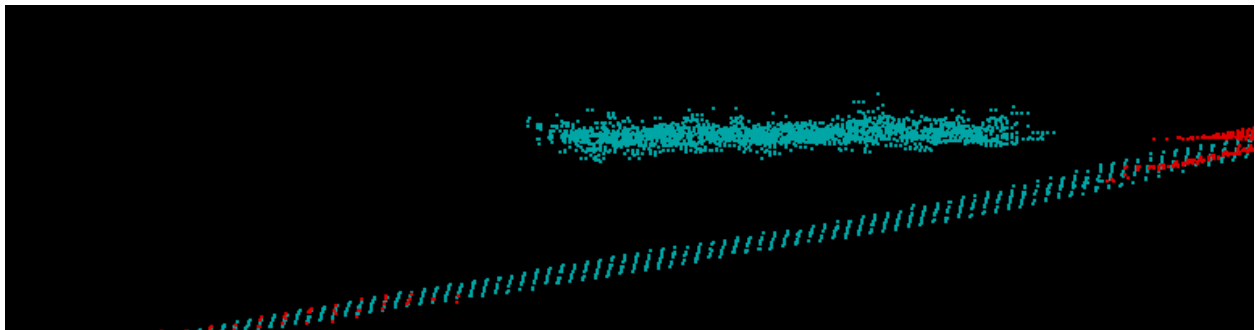
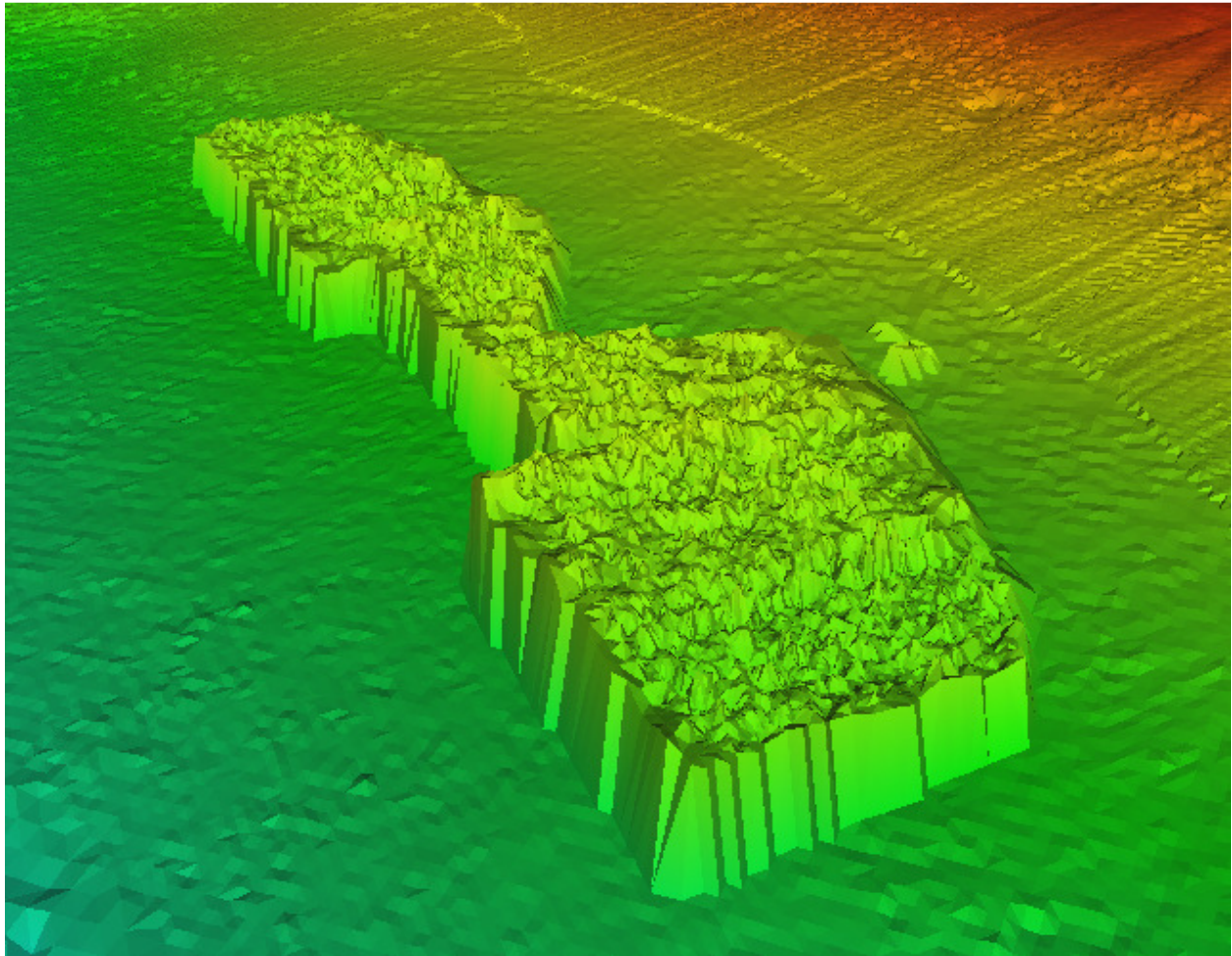


Figure 3: Tile #11SMS710405. Top: TIN model showing an artifact in the acoustic region where the points range from 20-50 meters above the surrounding area. Bottom: Profile view of acoustic points (cyan – class 25) in this location.

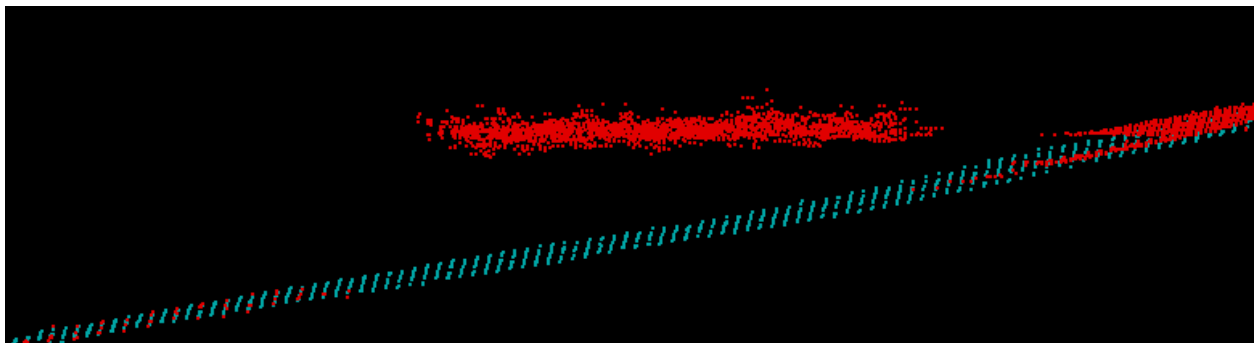
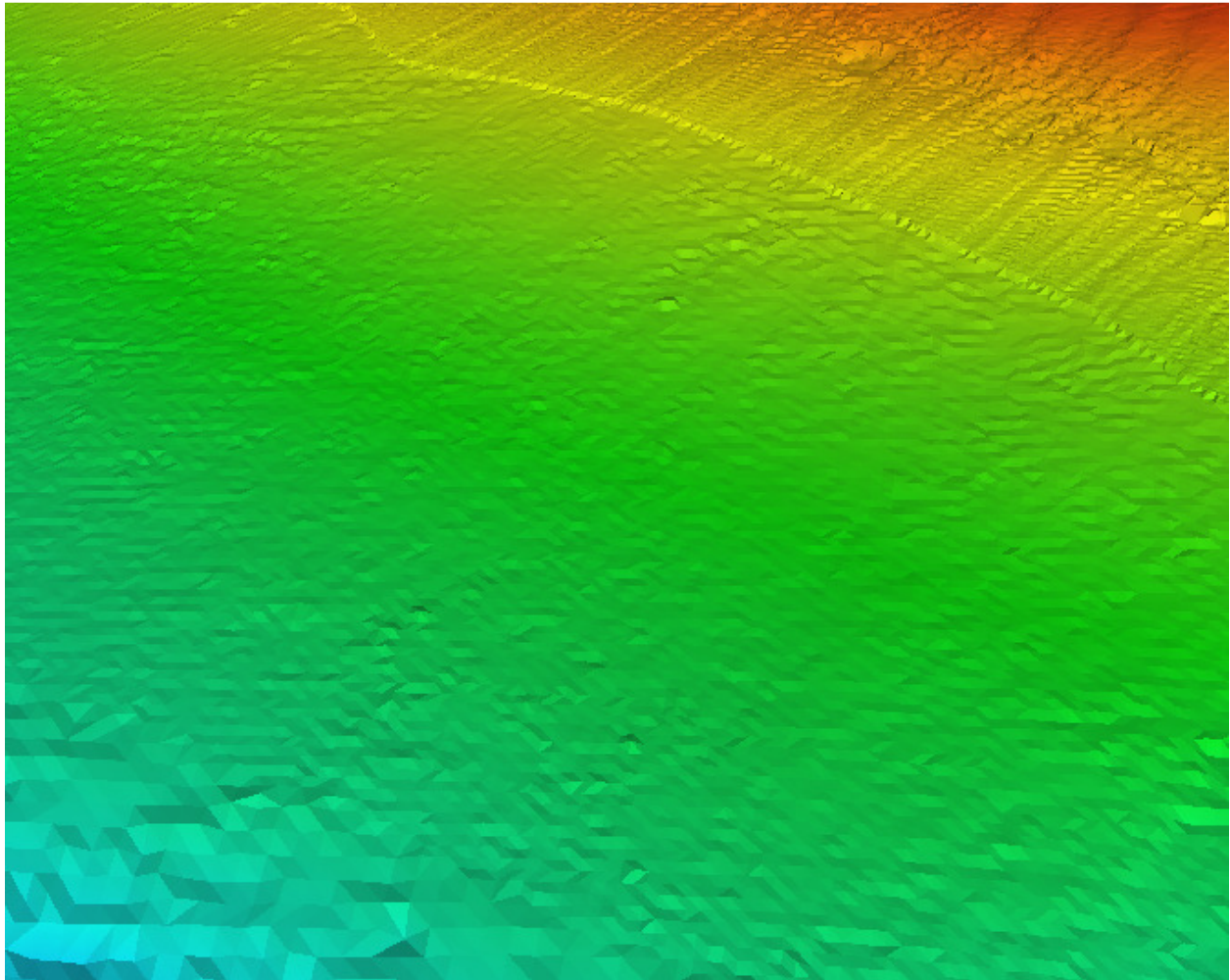


Figure 4: Tile #11SMS710405. Top: TIN model after removing artifact in the acoustic region. Bottom: Profile view of newly classified acoustic points in this location (cyan – class 25 final, red – class 26 overlap).



3. Islands / Offshore outcrops: Some islands were classified to water in the original topographic LiDAR data. Dewberry manually reclassified topographic LiDAR data to accurately reflect the presence of these offshore landmasses. Bathymetric data in these areas were reclassified to class 21 (non-submerged topography). If no topographic data was available, bathymetric data was moved from class 22 to class 2 to supplement the ground. An example from block 4 is shown below.

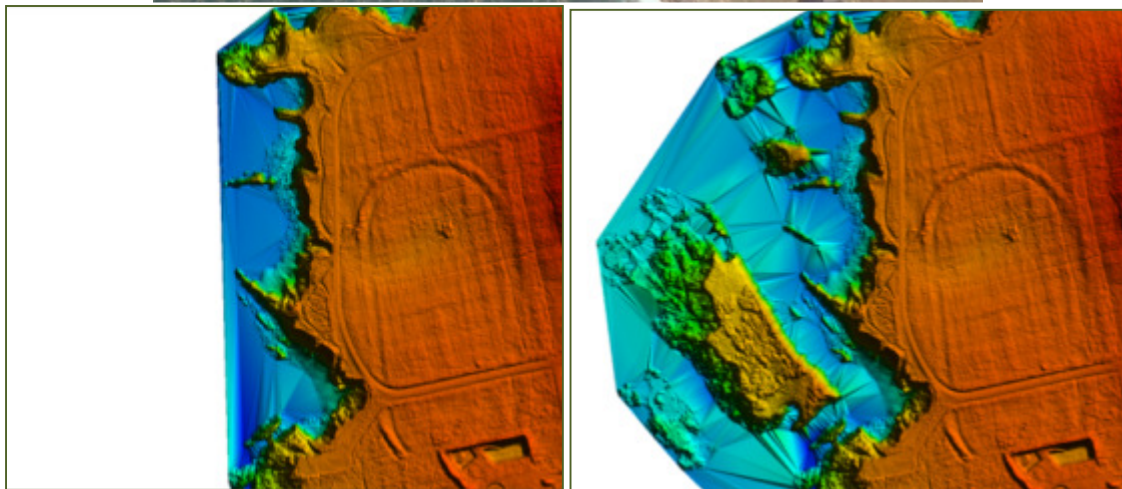


Figure 5: Tile# 10SDJ290500. Top: Aerial imagery showing a large island off the coastline. Bottom left: TIN before reclassification. Bottom right: TIN after manual reclassification.

4. **Artificial Features:** In several locations, filling voids with available acoustic data would result in elevated “islands” or artificial depressions due to the vertical offsets between the data sources. Therefore, to provide a more consistent ground, the points were allowed to interpolate across and acoustic data was kept in class 26 (ignored). Similarly, in areas where there are voids in the acoustic data, some bathymetric data was left as class 23 (ignored/overlap) to prevent additional artificial features. An example is shown below.

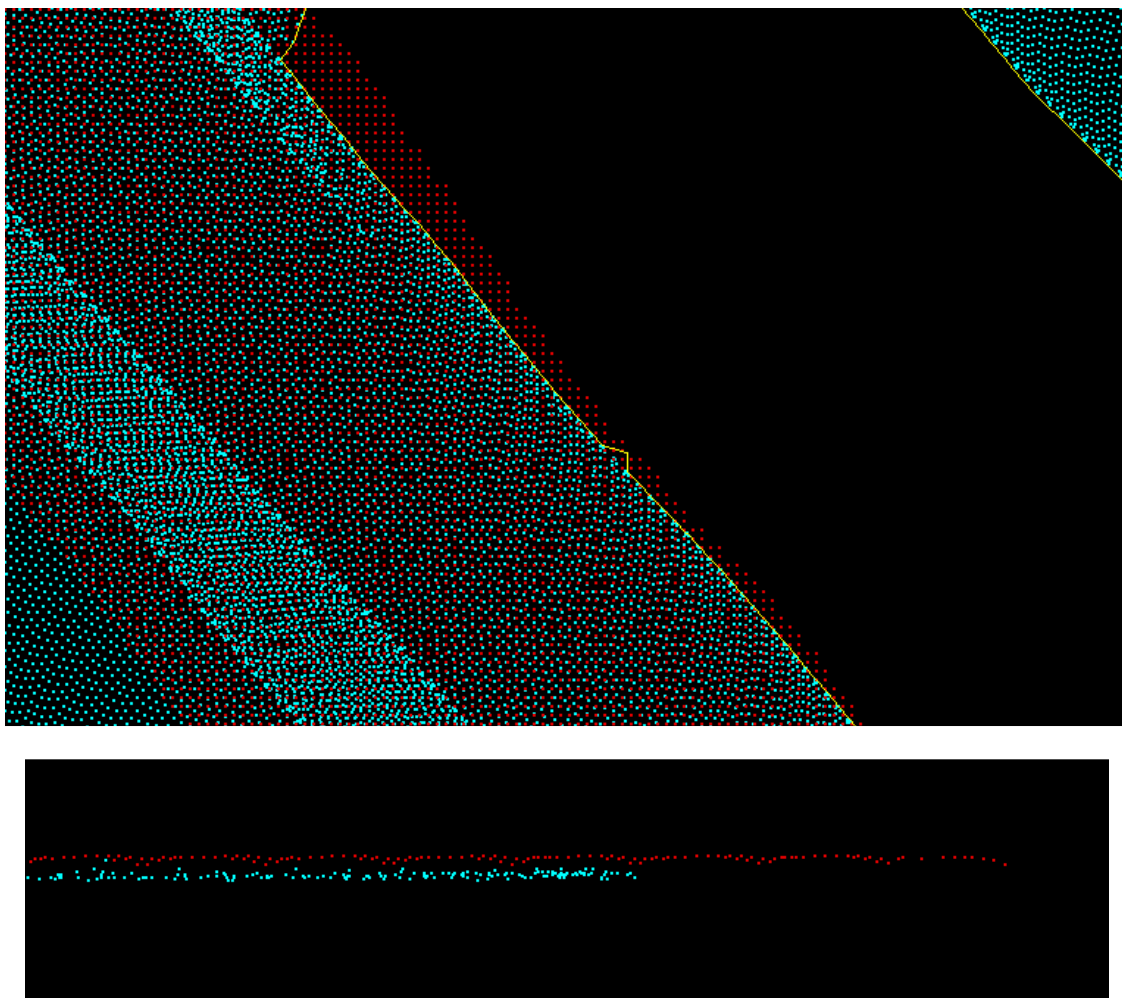


Figure 6: Tile #11SMS530855. Top: Bathymetric data (cyan – class 22) and acoustic overlap data (red – class 26). This void is not filled with available acoustic data because it would create a 0.5 meter high ledge at the boundary.

## DEM Production & Qualitative Assessment

The final products for production block 1a include two types of Digital Elevation Models (DEMs): Smoothed with Interpolated Voids and Smoothed with Voids. Smoothing was performed on the topographic-bathymetric seamline and the bathymetric-acoustic data seamline where necessary. Smoothing was not performed between adjacent acoustic surveys. DEMs were created by Dewberry after finalizing all data point classifications and reviewing LAS for quality assurance.

## DEM PRODUCTION METHODOLOGY

Dewberry utilized ESRI software and Global Mapper for the DEM production and QC process. ArcGIS software was used to generate the products and the QC was performed in both ArcGIS and Global Mapper.

1. LAS Classification: Final classifications for topographic, bathymetric, and multibeam acoustic LAS were merged in GeoCue.
2. Terrain Processing: LAS data was converted to masspoints in Arc using classes 2, 22, and 25. This masspoint feature class was used as the input for terrain processing in Arc with a 0.7m average point spacing.
3. DEM Zones for Processing: Individual DEM zones consisting of a one tile buffer were generated for the production block. This ensures artifacts are not created along boundaries during processing.
4. Convert Terrain to Raster: The output terrain was converted to an ERDAS Imagine raster (IMG) with 1 m cell size using the Natural Neighbors method. Extents were set to the DEM zone boundaries generated in step 3.
5. Smoothing: The resulting raster was smoothed using the approved smoothing methodology described below.
6. Removal of Voids: Void areas were removed from the raster produced from step 5 above using a void mask produced in the methodology described below. Voids along the topographic project boundary were removed for both DEM products. Additional voids within the bathymetric and acoustic areas were removed for the DEM with voids.
7. Final DEM: Rasters were clipped to the project boundary in Arc.
8. Extract Individual Tiles: Using a Dewberry proprietary tool, final DEMs were clipped to the tile grid and QC'd to ensure tile boundaries are seamless.

## SMOOTHING METHODOLOGY

Dewberry utilized ESRI ArcGIS software and Global Mapper for the creation and analysis of the smoothing technique.

1. Best Fit Line: The best fit seamline was used as the starting point for the smoothing process of the DEM. Using the initial raster from step 4 of the DEM methodology above as a visual guide, the seamline was reviewed manually on a tile by tile basis in Global Mapper. The line was clipped and/or removed in areas where vertical offsets were not visible in the DEM or where cliffs, berms, voids, or other features would be not be smoothed. This prevents any unnecessary alteration of the original elevation data. A 10m radius buffer polygon was generated in Arc around the remaining portions of the best fit line.
2. Extract the Smooth Mask Area: In Arc, the polygon buffer was used to extract a raster "strip" that would be used in the smoothing process. After extraction, the cell values in this raster strip were resampled to 3m cell size using mean aggregation. The resulting raster was resampled back to a 1m cell size using bilinear interpolation. This process produced a raster strip that would be used to smooth between data sources.
3. Smooth Mask Overlay: The initial raster, the raster strip, and the seamline polygon buffer were opened in Global Mapper software. To ensure that raster values are not automatically resampled in Global Mapper when performing the final export, the default raster interpolation option was changed to Nearest Neighbor (none) before any further processing was performed. The seamline polygon buffer was selected in Global Mapper and the raster strip was feathered by 8 pixels. This eliminated any hard edges that would



normally be produced by merging the two raster datasets. The two rasters were exported as one merged raster from Global Mapper using the following parameters:

File Type: ERDAS Imagine Image (IMG)  
Cell Size: 1m x 1m  
Data: 32-bit floating elevation  
Create Compressed File (UNCHECKED)  
Interpolate Gaps (CHECKED)

4. Initial QC of Exported DEM: The DEM was reopened in ESRI ArcGIS software and QC'd. Any alignment shifts, projection issues, or other problems were corrected as necessary.

### CREATION OF VOID MASK

Areas would be considered voids if they are greater than 3 times the nominal post spacing (or resolution) of the source data. It was determined the value of 225 sq meters would be used for the project.

1. Generation of Data Extent: Masspoints containing LAS class codes 2, 22, and 25 were used to generate extent polygons in Arc with the aggregate point tool. Aggregation distance was set to 15m. Extents were generated to the DEM zone boundary to prevent excessive voids along the project boundary.
2. Buffer: The resulting data extent was buffered by 1m. This prevents points on the edge of the extents from being included in the final void mask.
3. Symmetrical Difference: The buffered extent was inverted using the symmetrical difference tool in Arc. These areas represent the new initial data voids layer. Multipart features were exploded and area calculations were made on the resulting void polygons.
4. Void Mask: Void polygons smaller than 225 sq meters in area were removed. Voids resulting from poor LiDAR penetration, building footprints, or other topographic features were removed. An exception to this includes areas along the project boundary where a legitimate data void is present. Inland breaklines (lakes, ponds, streams) were converted to polygons and added to the void mask as necessary. The void mask was converted to raster format.
5. Extract Individual Tiles: Using a Dewberry proprietary tool, the final raster was clipped to the tile grid and QC'd to ensure tile boundaries are seamless.

### DEM ANALYSIS

Dewberry utilized Global Mapper and ArcGIS software to review the cleanliness of the DEM products. The following observations were made regarding the final merged DEMs.

1. Seamlines and Smoothing: Smoothing was performed between the topographic-bathymetric data and the bathymetric-acoustic data in areas where an offset was visible. Smoothing was not performed between acoustic surveys.

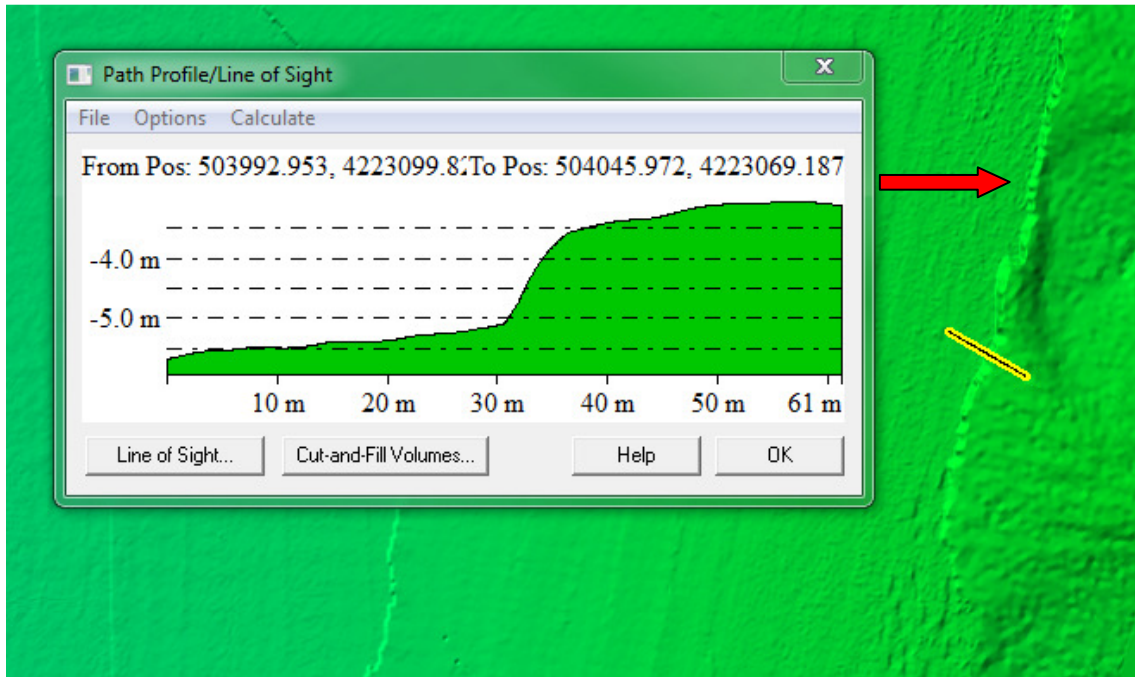


Figure 7: The best fit seamline between bathymetric and acoustic datasets results in approximately a 1.5 m vertical offset. This seamline is smoothed in the final DEM.

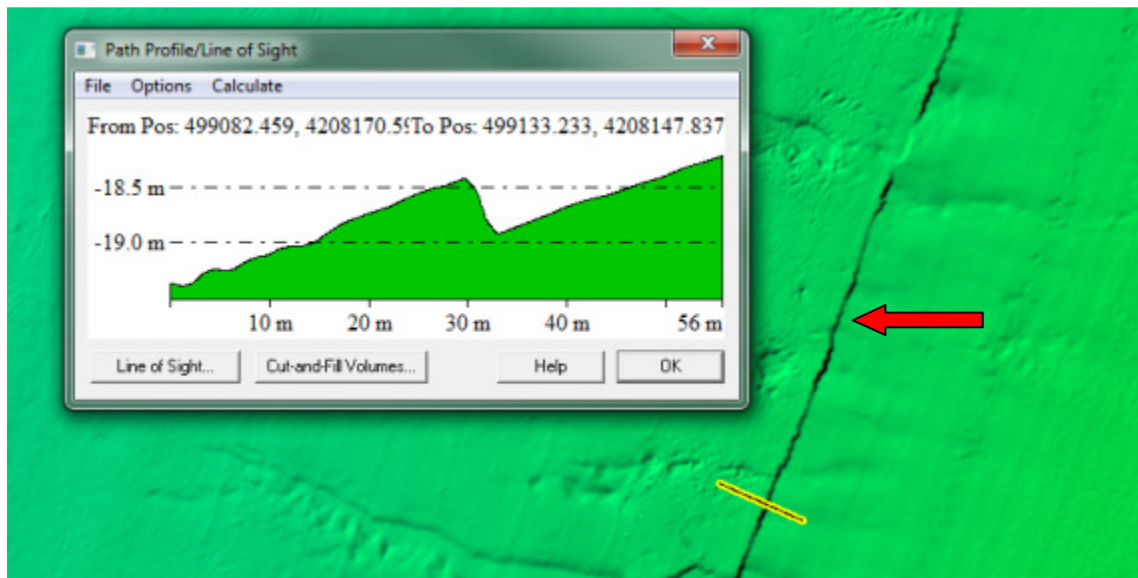
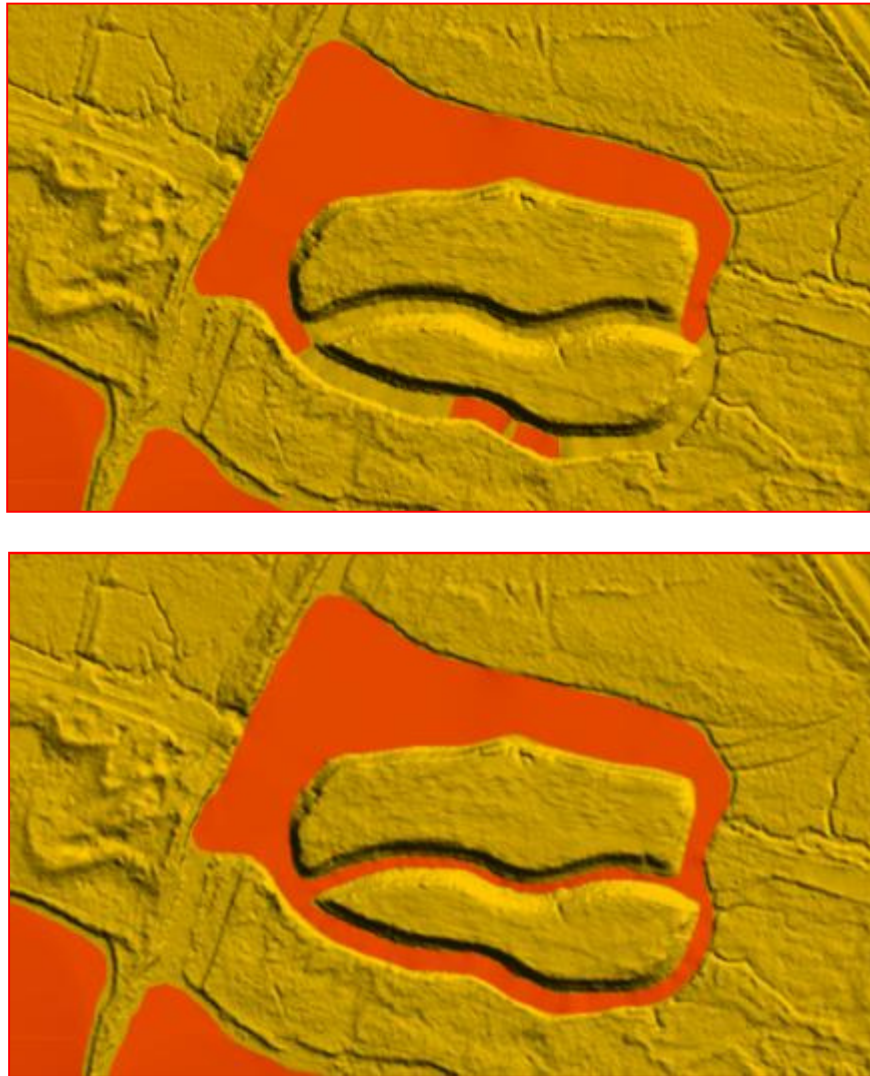


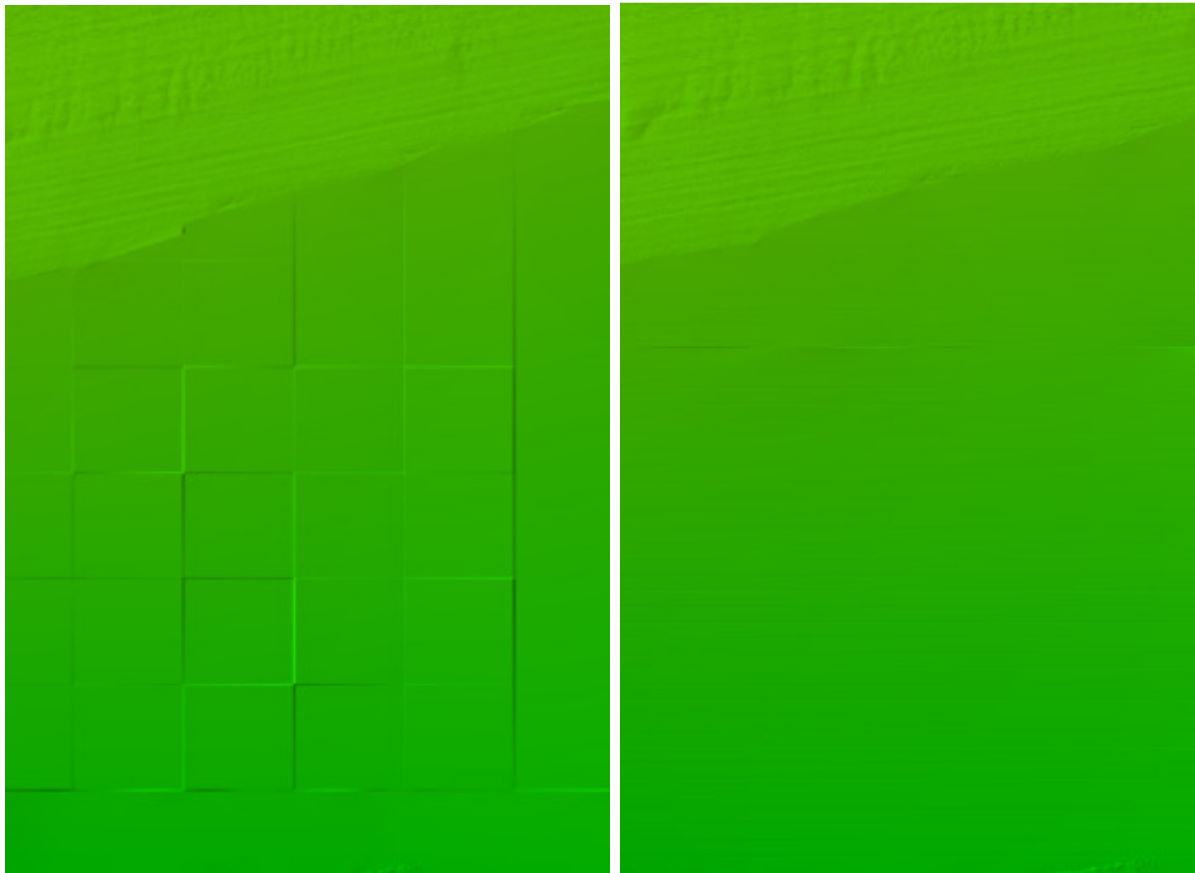
Figure 8: The best fit seamline between two acoustic datasets results in approximately a 0.5 m vertical offset. This seamline is not smoothed in the final DEM.

2. **Void Boundaries:** Final LAS class values of 2, 22, and 25 were used to create the void polygons. The final extents were buffered and inverted to create the new void mask. Review of the void mask showed that many of the narrower streams were not being correctly identified as voids. This resulted in some abrupt transitions between void and non-void areas. Breaklines were used to supplement the void layer in these areas.



**Figure 9: Top: Void Mask (red) after initial creation. Bottom: Void mask revised after reviewing for bathymetric data and incorporating the breaklines provided.**

3. **Processing Artifacts:** In areas with large voids, Arc has a difficult time interpolating between available data points. Therefore, the resulting raster is produced with an assortment of processing artifacts in the void areas. These artifacts are not of concern in the DEM with voids since they are removed with the void mask. In the interpolated DEM, attempts were made to reduce the appearance of these artifacts. Smaller areas of processing artifacts still exist, but should not affect the overall usability of the DEM.



**Figure 10: Left: Square processing artifacts emerge in areas of large voids when using ArcGIS Terrain to Raster tool. Right: Artifacts have been minimized by reprocessing the DEM in subsections in the affected area. Some processing artifacts still remain in the interpolated DEM, but have been minimalized as much as possible.**

4. Artifacts Along Project Boundary: Along the topographic side of the project boundary, there are several areas where LAS points are not available. To prevent the inclusion of processing artifacts in the DEMs at the project boundary, the project boundary was buffered inside by 15m and the DEMs were clipped to the new boundary extent. Large voids along the boundary edge were also removed from the DEMs.



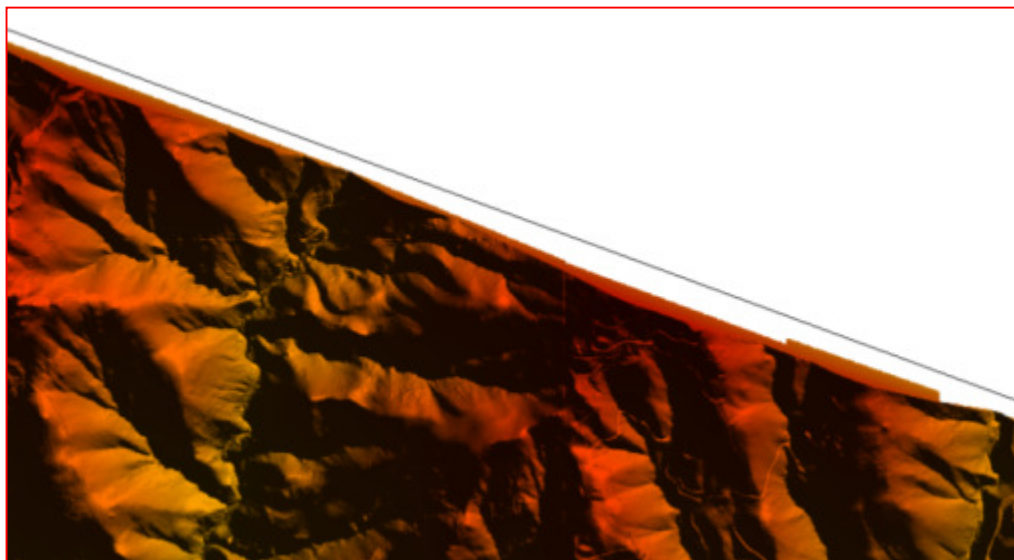


Figure 11: There is a visible gap between the project boundary (black line) and the topographic extent of the interpolated DEM. Because there are no data points in this area, interpolation does not extend to the project boundary and creates processing artifacts in the DEM. This area is clipped out for both DEM products.

## DEM QUALITATIVE ASSESSMENT

Dewberry performed a comprehensive qualitative assessment of the DEM deliverables to ensure that all tiled DEM products were delivered with the proper extents, were free of processing artifacts, and contained the proper referencing information. Upon completion of this review the DEM data was loaded into Global Mapper to ensure that all files are readable and that no artifacts exist between tiles.

## DEM QA/QC CHECKLIST

**Project Number/Description:** TO 11; NOAA Coastal California Data Merge Project

**Date:** 10/31/2013

### QC

- Correct number of files
- ERDAS Imagine IMG format
- Verify projection/coordinate system (NAD83 NSRS2007 UTM Zone 10N/11N meters and NAVD88 Geoid09 meters)
- Verify correct cell size, type, number of rows and columns of pixels
- Verify raster spatial extent covers project tile grid
- Perform final overview in Arc and Global Mapper to ensure seamless product

### Metadata

- Project level DEM metadata XML file is error free as determined by the USGS MP tool
- Metadata content contains sufficient detail and all pertinent information regarding source materials, projections, datums, processing steps, etc.

**Completion Comments:** Complete

## Generation of the Vertical Accuracy Layer

The final confidence layer is comprised of two (2) products: a Vertical Accuracy Layer and a Void Mask. The process for creating the void mask has been described in the previous section of this project report. The following describes the process of creating the vertical accuracy layer.

Where accuracy is unavailable for the vertical accuracy layer, the resulting products contain “undefined” in the vector layer and -9999 in the raster layer. Voids within the vertical accuracy layer are removed in the vector layer and is symbolized as NoData in the raster layer. For the separate void mask, void areas have a value of 1 in the raster layer. All other areas were assigned a value of 0 if within the project boundary and NoData if outside the project boundary.

### VECTOR LAYER

The seamlines generated between the topographic, bathymetric, and acoustic datasets were used to cut polygons from the DEM production boundaries. Each polygon was assigned a “Type” and “Accuracy” attribute using the information provided in the metadata.

The acoustic BAG data provided by NOAA’s National Geophysical Data Center (NGDC) contains a separate collection of ASCII point files where the elevations (z) are replaced with uncertainty (u) values per point (resulting in xyu files). These values represent uncertainties at MLLW. Using NOAA’s guide, *Estimation of Vertical Uncertainties in VDatum*, uncertainties were updated to reflect the transformation of the BAG data from MLLW to NAVD88 using the square root of the sum of the squares of the individual uncertainties. Accuracy values are generalized in the vector data for ease of display and the min-max uncertainty values per BAG survey are attributed accordingly.

### RASTER LAYER

Acoustic BAG uncertainty data was reclassified using the same extents used to classify the BAG elevation data. Cell sizes and values for each resolution were designated based on initial acoustic resolutions, i.e an LAS point with an uncertainty of 25cm in the 4m resolution extent would result in a 4m x 4m cell with a value of 0.25m. Cell sizes less than 1m were resampled to 1m resolution using mean cell assignment. Acoustic rasters were mosaicked together to 1m cell size.

Topographic and bathymetric polygons generated from the vertical accuracy vector layer were converted to 1m cell size rasters using the polygon to raster tool in Arc. These rasters were mosaicked with the final vertical accuracy raster.

Any NoData cells that existed between or within resolutions were filled in using focal statistics, neighborhood mean method using a 15m radius. Values of -9999 were treated as NoData to avoid being incorporated into mean calculations.

## Appendix A

### PRODUCTION BLOCK 1A

The 712 tiles delivered with production block 1a are listed below. Sixteen (16) tiles highlighted in yellow have DEMs, but do not have a corresponding LAS tile due to data voids:

11SMR815985	11SMS395930	11SMS455960	11SMS530795	11SMS575825	11SMS635600
11SMR830985	11SMS395945	11SMS470840	11SMS530810	11SMS575840	11SMS635615
11SMR845985	11SMS395960	11SMS470855	11SMS530825	11SMS590675	11SMS635630
11SMR860985	11SMS395975	11SMS470870	11SMS530840	11SMS590690	11SMS635645
11SMR875985	11SMS395990	11SMS470885	11SMS530855	11SMS590705	11SMS635660
11SMR890985	11SMS410885	11SMS470900	11SMS530870	11SMS590720	11SMS635675
11SMR905985	11SMS410900	11SMS470915	11SMS530885	11SMS590735	11SMS635690
11SMR920985	11SMS410915	11SMS470930	11SMS545735	11SMS590750	11SMS635705
11SMS290975	11SMS410930	11SMS470945	11SMS545750	11SMS590765	11SMS635720
11SMS290990	11SMS410945	11SMS485825	11SMS545765	11SMS590780	11SMS635735
11SMS305960	11SMS410960	11SMS485840	11SMS545780	11SMS590795	11SMS635750
11SMS305975	11SMS410975	11SMS485855	11SMS545795	11SMS590810	11SMS635765
11SMS305990	11SMS410990	11SMS485870	11SMS545810	11SMS590825	11SMS635780
11SMS320960	11SMS425870	11SMS485885	11SMS545825	11SMS605660	11SMS635795
11SMS320975	11SMS425885	11SMS485900	11SMS545840	11SMS605675	11SMS635810
11SMS320990	11SMS425900	11SMS485915	11SMS545855	11SMS605690	11SMS635825
11SMS335960	11SMS425915	11SMS485930	11SMS545870	11SMS605705	11SMS650555
11SMS335975	11SMS425930	11SMS500810	11SMS560705	11SMS605720	11SMS650570
11SMS335990	11SMS425945	11SMS500825	11SMS560720	11SMS605735	11SMS650585
11SMS350945	11SMS425960	11SMS500840	11SMS560735	11SMS605750	11SMS650600
11SMS350960	11SMS425975	11SMS500855	11SMS560750	11SMS605765	11SMS650615
11SMS350975	11SMS425990	11SMS500870	11SMS560765	11SMS605780	11SMS650630
11SMS350990	11SMS440870	11SMS500885	11SMS560780	11SMS605795	11SMS650645
11SMS365930	11SMS440885	11SMS500900	11SMS560795	11SMS605810	11SMS650660
11SMS365945	11SMS440900	11SMS500915	11SMS560810	11SMS620630	11SMS650675
11SMS365960	11SMS440915	11SMS500930	11SMS560825	11SMS620645	11SMS650690
11SMS365975	11SMS440930	11SMS515780	11SMS560840	11SMS620660	11SMS650705
11SMS365990	11SMS440945	11SMS515795	11SMS560855	11SMS620675	11SMS650720
11SMS380915	11SMS440960	11SMS515810	11SMS575690	11SMS620690	11SMS650735
11SMS380930	11SMS440975	11SMS515825	11SMS575705	11SMS620705	11SMS650750
11SMS380945	11SMS455855	11SMS515840	11SMS575720	11SMS620720	11SMS650765
11SMS380960	11SMS455870	11SMS515855	11SMS575735	11SMS620735	11SMS650780
11SMS380975	11SMS455885	11SMS515870	11SMS575750	11SMS620750	11SMS650795
11SMS380990	11SMS455900	11SMS515885	11SMS575765	11SMS620765	11SMS650810
11SMS395885	11SMS455915	11SMS515900	11SMS575780	11SMS620780	11SMS650825
11SMS395900	11SMS455930	11SMS530765	11SMS575795	11SMS620795	11SMS665315
11SMS395915	11SMS455945	11SMS530780	11SMS575810	11SMS620810	11SMS665330



Coastal California Data Merge

TO# 11

October 31, 2013

Page 23 of 57

<b>11SMS665345</b>	11SMS680630	11SMS695630	11SMS710615	11SMS725615	11SMS755120
11SMS665510	11SMS680645	11SMS695645	11SMS710630	11SMS725645	11SMS755135
11SMS665525	11SMS680660	11SMS695660	11SMS710645	11SMS725660	11SMS755150
11SMS665540	11SMS680675	11SMS695675	11SMS710660	11SMS725675	11SMS755165
11SMS665555	11SMS680690	11SMS695690	11SMS710675	11SMS725690	11SMS755180
11SMS665570	11SMS680705	11SMS695705	11SMS710690	11SMS740075	11SMS755195
11SMS665585	11SMS680720	11SMS695720	11SMS710705	11SMS740090	11SMS755210
11SMS665600	11SMS680735	11SMS695735	11SMS725090	11SMS740105	11SMS755225
11SMS665615	11SMS680750	11SMS710105	11SMS725105	11SMS740120	11SMS755240
11SMS665630	11SMS680765	11SMS710120	11SMS725120	11SMS740135	11SMS755255
11SMS665645	11SMS695150	11SMS710135	11SMS725135	11SMS740150	11SMS755270
11SMS665660	11SMS695165	11SMS710150	11SMS725150	11SMS740165	11SMS755285
11SMS665675	11SMS695180	11SMS710165	11SMS725165	11SMS740180	11SMS755300
11SMS665690	11SMS695195	11SMS710180	11SMS725180	11SMS740195	11SMS755315
11SMS665705	11SMS695210	11SMS710195	11SMS725195	11SMS740210	11SMS755330
11SMS665720	11SMS695225	11SMS710210	11SMS725210	11SMS740225	11SMS755345
11SMS665735	11SMS695240	11SMS710225	11SMS725225	11SMS740240	11SMS755360
11SMS665750	11SMS695255	11SMS710240	11SMS725240	11SMS740255	11SMS755375
11SMS665765	11SMS695270	11SMS710255	11SMS725255	11SMS740270	11SMS755390
11SMS665780	11SMS695285	11SMS710270	11SMS725270	11SMS740285	11SMS755405
11SMS665795	11SMS695300	11SMS710285	11SMS725285	11SMS740300	11SMS755420
11SMS665810	11SMS695315	11SMS710300	11SMS725300	11SMS740315	11SMS755435
11SMS680270	11SMS695330	11SMS710315	11SMS725315	11SMS740330	11SMS755450
11SMS680285	11SMS695345	11SMS710330	11SMS725330	11SMS740345	11SMS755465
11SMS680300	11SMS695360	11SMS710345	11SMS725345	11SMS740360	11SMS755480
11SMS680315	11SMS695375	11SMS710360	11SMS725360	11SMS740375	11SMS755495
11SMS680330	11SMS695390	11SMS710375	11SMS725375	11SMS740390	11SMS755510
11SMS680345	11SMS695405	11SMS710390	11SMS725390	11SMS740405	11SMS755525
11SMS680360	11SMS695420	11SMS710405	11SMS725405	11SMS740420	11SMS755540
11SMS680375	11SMS695435	11SMS710420	11SMS725420	11SMS740435	11SMS755555
11SMS680450	11SMS695450	11SMS710435	11SMS725435	11SMS740450	11SMS755600
11SMS680465	11SMS695465	11SMS710450	11SMS725450	11SMS740465	11SMS755615
11SMS680480	11SMS695480	11SMS710465	11SMS725465	11SMS740480	<b>11SMS770075</b>
11SMS680495	11SMS695495	11SMS710480	11SMS725480	11SMS740495	11SMS770090
11SMS680510	11SMS695510	11SMS710495	11SMS725495	11SMS740510	11SMS770105
11SMS680525	11SMS695525	11SMS710510	11SMS725510	11SMS740525	11SMS770120
11SMS680540	11SMS695540	11SMS710525	11SMS725525	11SMS740540	11SMS770135
11SMS680555	11SMS695555	11SMS710540	11SMS725540	11SMS740600	11SMS770150
11SMS680570	11SMS695570	11SMS710555	11SMS725555	11SMS740615	11SMS770165
11SMS680585	11SMS695585	11SMS710570	11SMS725570	11SMS755075	11SMS770180
11SMS680600	11SMS695600	11SMS710585	11SMS725585	11SMS755090	11SMS770195
11SMS680615	11SMS695615	11SMS710600	11SMS725600	11SMS755105	11SMS770210

Coastal California Data Merge

TO# 11

October 31, 2013

Page 24 of 57

11SMS770225	11SMS785390	11SMS815120	11SMS845090	11SMS890000	11SMS935060
11SMS770240	11SMS785405	11SMS815135	11SMS845105	11SMS890015	11SMS935075
11SMS770255	11SMS785420	11SMS815150	11SMS845120	11SMS890030	11SMS935090
11SMS770270	11SMS785435	11SMS815165	11SMS845135	11SMS890045	11SMS935105
11SMS770285	11SMS785465	11SMS815180	11SMS845150	11SMS890060	11SMS935120
11SMS770300	11SMS785480	11SMS815195	11SMS845165	11SMS890075	11SMS935135
11SMS770345	11SMS785495	11SMS815210	11SMS845180	11SMS890090	11SMS950000
11SMS770360	11SMS785510	11SMS815225	11SMS845195	11SMS890105	11SMS950015
11SMS770375	11SMS785525	11SMS815240	11SMS845240	11SMS890120	11SMS950045
11SMS770390	11SMS785540	11SMS815255	11SMS845255	11SMS890135	11SMS950120
11SMS770405	11SMS785555	11SMS815270	11SMS860000	11SMS890150	11SMS950135
11SMS770420	11SMS800075	11SMS815465	11SMS860015	11SMS890165	11SMT275005
11SMS770435	11SMS800090	11SMS815480	11SMS860030	11SMS890180	11SMT290005
11SMS770450	11SMS800105	11SMS815495	11SMS860045	11SMS905000	11SMT290020
11SMS770465	11SMS800120	11SMS815510	11SMS860060	11SMS905015	11SMT305005
11SMS770480	11SMS800135	11SMS830000	11SMS860075	11SMS905030	11SMT305020
11SMS770495	11SMS800150	11SMS830015	11SMS860090	11SMS905045	11SMT305035
11SMS770510	11SMS800165	11SMS830030	11SMS860105	11SMS905060	11SMT320005
11SMS770525	11SMS800180	11SMS830045	11SMS860120	11SMS905075	11SMT320020
11SMS770540	11SMS800195	11SMS830060	11SMS860135	11SMS905090	11SMT320035
11SMS770555	11SMS800210	11SMS830075	11SMS860150	11SMS905105	11SMT320050
11SMS770600	11SMS800225	11SMS830090	11SMS860165	11SMS905120	11SMT335005
11SMS770615	11SMS800240	11SMS830105	11SMS860180	11SMS905135	11SMT335020
11SMS785075	11SMS800255	11SMS830120	11SMS860195	11SMS905150	11SMT335035
11SMS785090	11SMS800270	11SMS830135	11SMS860240	11SMS905165	11SMT335050
11SMS785105	11SMS800285	11SMS830150	11SMS860255	11SMS905180	11SMT350005
11SMS785120	11SMS800300	11SMS830165	11SMS860270	11SMS920000	11SMT350020
11SMS785135	11SMS800315	11SMS830180	11SMS875000	11SMS920015	11SMT350035
11SMS785150	11SMS800465	11SMS830195	11SMS875015	11SMS920030	11SMT350050
11SMS785165	11SMS800480	11SMS830210	11SMS875030	11SMS920045	11SMT365005
11SMS785180	11SMS800495	11SMS830225	11SMS875045	11SMS920060	11SMT365020
11SMS785195	11SMS800510	11SMS830240	11SMS875060	11SMS920075	11SMT365035
11SMS785210	11SMS815000	11SMS830255	11SMS875075	11SMS920090	11SMT365050
11SMS785225	11SMS815015	11SMS830480	11SMS875090	11SMS920105	11SMT380005
11SMS785240	11SMS815030	11SMS845000	11SMS875105	11SMS920120	11SMT380020
11SMS785255	11SMS815045	11SMS845015	11SMS875120	11SMS920135	11SMT395005
11SMS785270	11SMS815060	11SMS845030	11SMS875135	11SMS935000	11SMT395020
11SMS785285	11SMS815075	11SMS845045	11SMS875150	11SMS935015	11SMT410005
11SMS785300	11SMS815090	11SMS845060	11SMS875165	11SMS935030	
11SMS785315	11SMS815105	11SMS845075	11SMS875180	11SMS935045	

## PRODUCTION BLOCK 1B

The 1236 tiles delivered with production block 1b are listed below. Two (2) tiles highlighted in yellow do not have a corresponding LAS tile due to data voids:

11SKT730965	11SKT835920	11SKT880965	11SKT925890	11SKT970830	11SLT000740
11SKT730980	11SKT835935	11SKT895770	11SKT925905	11SKT970845	11SLT000755
11SKT730995	11SKT835950	11SKT895785	11SKT925920	11SKT970860	11SLT000770
11SKT745950	11SKT835965	11SKT895800	11SKT925935	11SKT985695	11SLT000785
11SKT745965	11SKT835980	11SKT895815	11SKT940740	11SKT985710	11SLT000800
11SKT745980	11SKT835995	11SKT895830	11SKT940755	11SKT985725	11SLT000815
11SKT745995	11SKT850860	11SKT895845	11SKT940770	11SKT985740	11SLT000830
11SKT760950	11SKT850875	11SKT895860	11SKT940785	11SKT985755	11SLT015680
11SKT760965	11SKT850890	11SKT895875	11SKT940800	11SKT985770	11SLT015695
11SKT760980	11SKT850905	11SKT895890	11SKT940815	11SKT985785	11SLT015710
11SKT760995	11SKT850920	11SKT895905	11SKT940830	11SKT985800	11SLT015725
11SKT775935	11SKT850935	11SKT895920	11SKT940845	11SKT985815	11SLT015740
11SKT775950	11SKT850950	11SKT895935	11SKT940860	11SKT985830	11SLT015755
11SKT775965	11SKT850965	11SKT895950	11SKT940875	11SKT985845	11SLT015770
11SKT775980	11SKT850980	11SKT910755	11SKT940890	11SKU730010	11SLT015785
11SKT775995	11SKT865830	11SKT910770	11SKT940905	11SKU730025	11SLT015800
11SKT790920	11SKT865845	11SKT910785	11SKT940920	11SKU730040	11SLT015815
11SKT790935	11SKT865860	11SKT910800	11SKT955725	11SKU730055	11SLT015830
11SKT790950	11SKT865875	11SKT910815	11SKT955740	11SKU730070	11SLT030680
11SKT790965	11SKT865890	11SKT910830	11SKT955755	11SKU745010	11SLT030695
11SKT790980	11SKT865905	11SKT910845	11SKT955770	11SKU745025	11SLT030710
11SKT790995	11SKT865920	11SKT910860	11SKT955785	11SKU745040	11SLT030725
11SKT805905	11SKT865935	11SKT910875	11SKT955800	11SKU745055	11SLT030740
11SKT805920	11SKT865950	11SKT910890	11SKT955815	11SKU745070	11SLT030755
11SKT805935	11SKT865965	11SKT910905	11SKT955830	11SKU760010	11SLT030770
11SKT805950	11SKT865980	11SKT910920	11SKT955845	11SKU760025	11SLT030785
11SKT805965	11SKT880785	11SKT910935	11SKT955860	11SKU760040	11SLT030800
11SKT805980	11SKT880800	11SKT910950	11SKT955875	11SKU760055	11SLT030815
11SKT805995	11SKT880815	11SKT925740	11SKT955890	11SKU775010	11SLT030830
11SKT820905	11SKT880830	11SKT925755	11SKT955905	11SKU775025	11SLT030845
11SKT820920	11SKT880845	11SKT925770	11SKT970710	11SKU775040	11SLT045680
11SKT820935	11SKT880860	11SKT925785	11SKT970725	11SKU790010	11SLT045695
11SKT820950	11SKT880875	11SKT925800	11SKT970740	11SKU790025	11SLT045710
11SKT820965	11SKT880890	11SKT925815	11SKT970755	11SKU805010	11SLT045725
11SKT820980	11SKT880905	11SKT925830	11SKT970770	11SKU820010	11SLT045740
11SKT820995	11SKT880920	11SKT925845	11SKT970785	11SLT000695	11SLT045755
11SKT835890	11SKT880935	11SKT925860	11SKT970800	11SLT000710	11SLT045770
11SKT835905	11SKT880950	11SKT925875	11SKT970815	11SLT000725	11SLT045785

Coastal California Data Merge

TO# 11

October 31, 2013

Page 26 of 57

11SLT045800	11SLT090845	11SLT165695	11SLT255695	11SLT345620	11SLT435665
11SLT045815	11SLT105650	11SLT165710	11SLT270590	11SLT345635	11SLT435680
11SLT045830	11SLT105665	11SLT165725	11SLT270605	11SLT345650	11SLT450605
11SLT045845	11SLT105680	11SLT180620	11SLT270620	11SLT345665	11SLT450620
11SLT060680	11SLT105695	11SLT180635	11SLT270635	11SLT360575	11SLT450635
11SLT060695	11SLT105710	11SLT180650	11SLT270650	11SLT360590	11SLT450650
11SLT060710	11SLT105725	11SLT180665	11SLT270665	11SLT360605	11SLT450665
11SLT060725	11SLT105740	11SLT180680	11SLT270680	11SLT360620	11SLT450680
11SLT060740	11SLT105770	11SLT180695	11SLT285575	11SLT360635	11SLT465605
11SLT060755	11SLT105785	11SLT180710	11SLT285590	11SLT360650	11SLT465620
11SLT060770	11SLT105800	11SLT195620	11SLT285605	11SLT360665	11SLT465635
11SLT060785	11SLT105815	11SLT195635	11SLT285620	11SLT360680	11SLT465650
11SLT060800	11SLT105830	11SLT195650	11SLT285635	11SLT375590	11SLT465665
11SLT060815	11SLT120650	11SLT195665	11SLT285650	11SLT375605	11SLT465680
11SLT060830	11SLT120665	11SLT195680	11SLT285665	11SLT375620	11SLT480605
11SLT060845	11SLT120680	11SLT195695	11SLT285680	11SLT375635	11SLT480620
11SLT075665	11SLT120695	11SLT195710	11SLT300575	11SLT375650	11SLT480635
11SLT075680	11SLT120710	11SLT210620	11SLT300590	11SLT375665	11SLT480650
11SLT075695	11SLT120725	11SLT210635	11SLT300605	11SLT375680	11SLT480665
11SLT075710	11SLT120740	11SLT210650	11SLT300620	11SLT390605	11SLT480680
11SLT075725	11SLT120785	11SLT210665	11SLT300635	11SLT390620	11SLT495605
11SLT075740	11SLT120800	11SLT210680	11SLT300650	11SLT390635	11SLT495620
11SLT075755	11SLT120815	11SLT210695	11SLT300665	11SLT390650	11SLT495635
11SLT075770	11SLT135650	11SLT210710	11SLT300680	11SLT390665	11SLT495650
11SLT075785	11SLT135665	11SLT225620	11SLT315575	11SLT390680	11SLT495665
11SLT075800	11SLT135680	11SLT225635	11SLT315590	11SLT405605	11SLT495680
11SLT075815	11SLT135695	11SLT225650	11SLT315605	11SLT405620	11SLT510605
11SLT075830	11SLT135710	11SLT225665	11SLT315620	11SLT405635	11SLT510620
11SLT075845	11SLT135725	11SLT225680	11SLT315635	11SLT405650	11SLT510635
11SLT090665	11SLT135740	11SLT225695	11SLT315650	11SLT405665	11SLT510650
11SLT090680	11SLT150635	11SLT240620	11SLT315665	11SLT405680	11SLT510665
11SLT090695	11SLT150650	11SLT240635	11SLT330575	11SLT420605	11SLT510680
11SLT090710	11SLT150665	11SLT240650	11SLT330590	11SLT420620	11SLT525605
11SLT090725	11SLT150680	11SLT240665	11SLT330605	11SLT420635	11SLT525620
11SLT090740	11SLT150695	11SLT240680	11SLT330620	11SLT420650	11SLT525635
11SLT090755	11SLT150710	11SLT240695	11SLT330635	11SLT420665	11SLT525650
11SLT090770	11SLT150725	11SLT255620	11SLT330650	11SLT420680	11SLT525665
11SLT090785	11SLT165635	11SLT255635	11SLT330665	11SLT435605	11SLT525680
11SLT090800	11SLT165650	11SLT255650	11SLT345575	11SLT435620	11SLT540605
11SLT090815	11SLT165665	11SLT255665	11SLT345590	11SLT435635	11SLT540620
11SLT090830	11SLT165680	11SLT255680	11SLT345605	11SLT435650	11SLT540635

11SLT540650	11SLT615410	11SLT645410	11SLT660650	11SLT690500	11SLT720635
11SLT540665	11SLT615500	11SLT645425	11SLT675275	11SLT690515	11SLT720650
11SLT540680	11SLT615515	11SLT645440	11SLT675290	11SLT690530	11SLT735260
11SLT555590	11SLT615530	11SLT645455	11SLT675305	11SLT690590	11SLT735275
11SLT555605	11SLT615545	11SLT645470	11SLT675320	11SLT690605	11SLT735290
11SLT555620	11SLT615560	11SLT645485	11SLT675335	11SLT690620	11SLT735305
11SLT555635	11SLT615575	11SLT645500	11SLT675350	11SLT690635	11SLT735320
11SLT555650	11SLT615590	11SLT645515	11SLT675365	11SLT705275	11SLT735335
11SLT555665	11SLT615605	11SLT645530	11SLT675380	11SLT705290	11SLT735350
11SLT555680	11SLT615620	11SLT645545	11SLT675395	11SLT705305	11SLT735440
11SLT570590	11SLT615635	11SLT645560	11SLT675410	11SLT705320	11SLT735455
11SLT570605	11SLT615650	11SLT645575	11SLT675425	11SLT705335	11SLT750245
11SLT570620	11SLT630305	11SLT645590	11SLT675440	11SLT705350	11SLT750260
11SLT570635	11SLT630320	11SLT645605	11SLT675455	11SLT705380	11SLT750275
11SLT570650	11SLT630335	11SLT645620	11SLT675470	11SLT705395	11SLT750290
11SLT570665	11SLT630350	11SLT645635	11SLT675485	11SLT705410	11SLT750305
11SLT570680	11SLT630365	11SLT660275	11SLT675500	11SLT705425	11SLT750320
11SLT585560	11SLT630380	11SLT660290	11SLT675515	11SLT705440	11SLT750335
11SLT585575	11SLT630395	11SLT660305	11SLT675530	11SLT705455	11SLT750485
11SLT585590	11SLT630410	11SLT660320	11SLT675545	11SLT705470	11SLT750500
11SLT585605	11SLT630425	11SLT660335	11SLT675560	11SLT705485	11SLT750515
11SLT585620	11SLT630470	11SLT660350	11SLT675575	11SLT705500	11SLT765245
11SLT585635	11SLT630485	11SLT660365	11SLT675590	11SLT705590	11SLT765260
11SLT585650	11SLT630500	11SLT660380	11SLT675605	11SLT705605	11SLT765275
11SLT585665	11SLT630515	11SLT660395	11SLT675620	11SLT705620	11SLT765290
11SLT585680	11SLT630530	11SLT660410	11SLT675635	11SLT705635	11SLT765305
11SLT600530	11SLT630545	11SLT660425	11SLT690275	11SLT705650	11SLT765320
11SLT600545	11SLT630560	11SLT660440	11SLT690290	11SLT720260	11SLT765335
11SLT600560	11SLT630575	11SLT660455	11SLT690305	11SLT720275	11SLT765470
11SLT600575	11SLT630590	11SLT660470	11SLT690320	11SLT720290	11SLT765485
11SLT600590	11SLT630605	11SLT660485	11SLT690335	11SLT720305	11SLT765500
11SLT600605	11SLT630620	11SLT660500	11SLT690350	11SLT720320	11SLT765515
11SLT600620	11SLT630635	11SLT660515	11SLT690365	11SLT720335	11SLT780245
11SLT600635	11SLT645290	11SLT660530	11SLT690380	11SLT720350	11SLT780260
11SLT600650	11SLT645305	11SLT660545	11SLT690395	11SLT720410	11SLT780275
11SLT600665	11SLT645320	11SLT660560	11SLT690410	11SLT720425	11SLT780290
11SLT615335	11SLT645335	11SLT660575	11SLT690425	11SLT720440	11SLT780305
11SLT615350	11SLT645350	11SLT660590	11SLT690440	11SLT720455	11SLT780320
11SLT615365	11SLT645365	11SLT660605	11SLT690455	11SLT720590	11SLT780335
11SLT615380	11SLT645380	11SLT660620	11SLT690470	11SLT720605	11SLT780350
11SLT615395	11SLT645395	11SLT660635	11SLT690485	11SLT720620	11SLT780365

Coastal California Data Merge

TO# 11

October 31, 2013

Page 28 of 57

11SLT780380	11SLT810440	11SLT855260	11SLT885410	11SLT930440	11SLT975425
11SLT780395	11SLT810455	11SLT855275	11SLT885425	11SLT945260	11SLT975440
11SLT780410	11SLT810470	11SLT855290	11SLT885440	11SLT945275	11SLT975455
11SLT780425	11SLT810485	11SLT855305	11SLT885455	11SLT945290	11SLT990215
11SLT780440	11SLT810500	11SLT855320	11SLT885470	11SLT945305	11SLT990230
11SLT780455	11SLT825230	11SLT855335	11SLT900260	11SLT945320	11SLT990245
11SLT780470	11SLT825245	11SLT855350	11SLT900275	11SLT945335	11SLT990260
11SLT780485	11SLT825260	11SLT855365	11SLT900290	11SLT945350	11SLT990275
11SLT780500	11SLT825275	11SLT855380	11SLT900305	11SLT945365	11SLT990290
11SLT795245	11SLT825290	11SLT855395	11SLT900320	11SLT945380	11SLT990305
11SLT795260	11SLT825305	11SLT855410	11SLT900335	11SLT945395	11SLT990320
11SLT795275	11SLT825320	11SLT855425	11SLT900350	11SLT945410	11SLT990335
11SLT795290	11SLT825335	11SLT855440	11SLT900365	11SLT945425	11SLT990350
11SLT795305	11SLT825350	11SLT855455	11SLT900380	11SLT945440	11SLT990365
11SLT795320	11SLT825365	11SLT855470	11SLT900395	11SLT945455	11SLT990380
11SLT795335	11SLT825380	11SLT870245	11SLT900410	11SLT960260	11SLT990395
11SLT795350	11SLT825395	11SLT870260	11SLT900425	11SLT960275	11SLT990410
11SLT795365	11SLT825410	11SLT870275	11SLT915260	11SLT960290	11SLT990425
11SLT795380	11SLT825425	11SLT870290	11SLT915275	11SLT960305	11SLT990440
11SLT795395	11SLT825440	11SLT870305	11SLT915290	11SLT960320	11SLT990455
11SLT795410	11SLT825455	11SLT870320	11SLT915305	11SLT960335	11SMT005215
11SLT795425	11SLT825470	11SLT870335	11SLT915320	11SLT960350	11SMT005230
11SLT795440	11SLT825485	11SLT870350	11SLT915335	11SLT960365	11SMT005245
11SLT795455	11SLT840245	11SLT870365	11SLT915350	11SLT960380	11SMT005260
11SLT795470	11SLT840260	11SLT870380	11SLT915365	11SLT960395	11SMT005275
11SLT795485	11SLT840275	11SLT870395	11SLT915380	11SLT960410	11SMT005290
11SLT795500	11SLT840290	11SLT870410	11SLT915395	11SLT960425	11SMT005305
11SLT810230	11SLT840305	11SLT870425	11SLT915410	11SLT960440	11SMT005320
11SLT810245	11SLT840320	11SLT870440	11SLT915425	11SLT960455	11SMT005335
11SLT810260	11SLT840335	11SLT870455	11SLT930260	11SLT975245	11SMT005350
11SLT810275	11SLT840350	11SLT870470	11SLT930275	11SLT975260	11SMT005365
11SLT810290	11SLT840365	11SLT885260	11SLT930290	11SLT975275	11SMT005380
11SLT810305	11SLT840380	11SLT885275	11SLT930305	11SLT975290	11SMT005395
11SLT810320	11SLT840395	11SLT885290	11SLT930320	11SLT975305	11SMT005410
11SLT810335	11SLT840410	11SLT885305	11SLT930335	11SLT975320	11SMT005425
11SLT810350	11SLT840425	11SLT885320	11SLT930350	11SLT975335	11SMT005440
11SLT810365	11SLT840440	11SLT885335	11SLT930365	11SLT975350	11SMT005455
11SLT810380	11SLT840455	11SLT885350	11SLT930380	11SLT975365	11SMT020185
11SLT810395	11SLT840470	11SLT885365	11SLT930395	11SLT975380	11SMT020200
11SLT810410	11SLT840485	11SLT885380	11SLT930410	11SLT975395	11SMT020215
11SLT810425	11SLT855245	11SLT885395	11SLT930425	11SLT975410	11SMT020230

Coastal California Data Merge

TO# 11

October 31, 2013

Page 29 of 57

11SMT020245	11SMT050200	11SMT080230	11SMT125125	11SMT155275	11SMT200215
11SMT020260	11SMT050215	11SMT080245	11SMT125140	11SMT155290	11SMT200230
11SMT020275	11SMT050230	11SMT080260	11SMT125155	11SMT155305	11SMT200245
11SMT020290	11SMT050245	11SMT080275	11SMT125170	11SMT170095	11SMT200260
11SMT020305	11SMT050260	11SMT080290	11SMT125185	11SMT170110	11SMT200275
11SMT020320	11SMT050275	11SMT080305	11SMT125200	11SMT170125	11SMT200290
11SMT020335	11SMT050290	11SMT080320	11SMT125215	11SMT170140	11SMT215065
11SMT020350	11SMT050305	11SMT080335	11SMT125230	11SMT170155	11SMT215080
11SMT020365	11SMT050320	11SMT080350	11SMT125245	11SMT170170	11SMT215095
11SMT020380	11SMT050335	11SMT080365	11SMT125260	11SMT170185	11SMT215110
11SMT020395	11SMT050350	11SMT095140	11SMT125275	11SMT170200	11SMT215125
11SMT020410	11SMT050365	11SMT095155	11SMT125290	11SMT170215	11SMT215140
11SMT020425	11SMT050380	11SMT095170	11SMT125305	11SMT170230	11SMT215155
11SMT020440	11SMT050395	11SMT095185	11SMT125320	11SMT170245	11SMT215215
11SMT020455	11SMT050410	11SMT095200	11SMT125335	11SMT170260	11SMT215230
11SMT020470	11SMT050425	11SMT095215	11SMT140110	11SMT170275	11SMT215245
11SMT020485	11SMT050470	11SMT095230	11SMT140125	11SMT170290	11SMT215260
11SMT035185	11SMT050485	11SMT095245	11SMT140140	11SMT170305	11SMT215275
11SMT035200	11SMT065155	11SMT095260	11SMT140155	11SMT185080	11SMT230050
11SMT035215	11SMT065170	11SMT095275	11SMT140170	11SMT185095	11SMT230065
11SMT035230	11SMT065185	11SMT095290	11SMT140185	11SMT185110	11SMT230080
11SMT035245	11SMT065200	11SMT095305	11SMT140200	11SMT185125	11SMT230095
11SMT035260	11SMT065215	11SMT095320	11SMT140215	11SMT185140	11SMT230110
11SMT035275	11SMT065230	11SMT095335	11SMT140230	11SMT185155	11SMT230125
11SMT035290	11SMT065245	11SMT095350	11SMT140245	11SMT185170	11SMT230140
11SMT035305	11SMT065260	11SMT110125	11SMT140260	11SMT185185	11SMT230155
11SMT035320	11SMT065275	11SMT110140	11SMT140275	11SMT185200	11SMT230230
11SMT035335	11SMT065290	11SMT110155	11SMT140290	11SMT185215	11SMT230245
11SMT035350	11SMT065305	11SMT110170	11SMT140305	11SMT185230	11SMT230260
11SMT035365	11SMT065320	11SMT110185	11SMT140320	11SMT185245	11SMT230275
11SMT035380	11SMT065335	11SMT110200	11SMT155110	11SMT185260	11SMT245035
11SMT035395	11SMT065350	11SMT110215	11SMT155125	11SMT185275	11SMT245050
11SMT035410	11SMT065365	11SMT110230	11SMT155140	11SMT185290	11SMT245065
11SMT035425	11SMT065380	11SMT110245	11SMT155155	11SMT200065	11SMT245080
11SMT035440	11SMT065395	11SMT110260	11SMT155170	11SMT200080	11SMT245095
11SMT035455	11SMT080140	11SMT110275	11SMT155185	11SMT200095	11SMT245110
11SMT035470	11SMT080155	11SMT110290	11SMT155200	11SMT200110	11SMT245125
11SMT035485	11SMT080170	11SMT110305	11SMT155215	11SMT200125	11SMT245140
11SMT035500	11SMT080185	11SMT110320	11SMT155230	11SMT200140	11SMT260020
11SMT050170	11SMT080200	11SMT110335	11SMT155245	11SMT200155	11SMT260035
11SMT050185	11SMT080215	11SMT110350	11SMT155260	11SMT200170	11SMT260050



11SMT260065	11SMT260125	11SMT275065	11SMT275125	11SMT290080	11SMT305065
11SMT260080	11SMT275020	11SMT275080	11SMT290035	11SMT290095	11SMT305080
11SMT260095	11SMT275035	11SMT275095	11SMT290050	11SMT290110	11SMT305095
11SMT260110	11SMT275050	11SMT275110	11SMT290065	11SMT305050	11SMT320065

## PRODUCTION BLOCK 2A

The 226 tiles delivered with production block 2a are listed below.

11SKT700995	11SKU325100	11SKU400040	11SKU475055	11SKU550100	11SKU640070
11SKT715980	11SKU325115	11SKU400055	11SKU475070	11SKU550115	11SKU640085
11SKT715995	11SKU325130	11SKU400070	11SKU475085	11SKU550130	11SKU640100
11SKU250085	11SKU325145	11SKU400085	11SKU475100	11SKU565055	11SKU640115
11SKU250100	11SKU340040	11SKU400100	11SKU475115	11SKU565070	11SKU655025
11SKU250115	11SKU340055	11SKU400115	11SKU490025	11SKU565085	11SKU655040
11SKU250130	11SKU340070	11SKU400130	11SKU490040	11SKU565100	11SKU655055
11SKU250145	11SKU340085	11SKU400145	11SKU490055	11SKU565115	11SKU655070
11SKU250160	11SKU340100	11SKU415055	11SKU490070	11SKU565130	11SKU655085
11SKU250175	11SKU340115	11SKU415070	11SKU490085	11SKU580055	11SKU655100
11SKU265085	11SKU340130	11SKU415085	11SKU490100	11SKU580070	11SKU655115
11SKU265100	11SKU340145	11SKU415100	11SKU490115	11SKU580085	11SKU670010
11SKU265115	11SKU355040	11SKU415115	11SKU505025	11SKU580100	11SKU670025
11SKU265130	11SKU355055	11SKU415130	11SKU505040	11SKU580115	11SKU670040
11SKU265145	11SKU355070	11SKU415145	11SKU505055	11SKU580130	11SKU670055
11SKU265160	11SKU355085	11SKU430040	11SKU505070	11SKU595055	11SKU670070
11SKU280085	11SKU355100	11SKU430055	11SKU505085	11SKU595070	11SKU670085
11SKU280100	11SKU355115	11SKU430070	11SKU505100	11SKU595085	11SKU670100
11SKU280115	11SKU355130	11SKU430085	11SKU505115	11SKU595100	11SKU685010
11SKU280130	11SKU355145	11SKU430100	11SKU520025	11SKU595115	11SKU685025
11SKU280145	11SKU370040	11SKU430115	11SKU520040	11SKU595130	11SKU685040
11SKU280160	11SKU370055	11SKU430130	11SKU520055	11SKU610040	11SKU685055
11SKU295070	11SKU370070	11SKU445040	11SKU520070	11SKU610055	11SKU685070
11SKU295085	11SKU370085	11SKU445055	11SKU520085	11SKU610070	11SKU685085
11SKU295100	11SKU370100	11SKU445070	11SKU520100	11SKU610085	11SKU700010
11SKU295115	11SKU370115	11SKU445085	11SKU520115	11SKU610100	11SKU700025
11SKU295130	11SKU370130	11SKU445100	11SKU520130	11SKU610115	11SKU700040
11SKU295145	11SKU370145	11SKU445115	11SKU535040	11SKU610130	11SKU700055
11SKU310055	11SKU370160	11SKU445130	11SKU535055	11SKU625025	11SKU700070
11SKU310070	11SKU385040	11SKU460025	11SKU535070	11SKU625040	11SKU700085
11SKU310085	11SKU385055	11SKU460040	11SKU535085	11SKU625055	11SKU715010
11SKU310100	11SKU385070	11SKU460055	11SKU535100	11SKU625070	11SKU715025
11SKU310115	11SKU385085	11SKU460070	11SKU535115	11SKU625085	11SKU715040
11SKU310130	11SKU385100	11SKU460085	11SKU535130	11SKU625100	11SKU715055
11SKU310145	11SKU385115	11SKU460100	11SKU550040	11SKU625115	11SKU715070
11SKU325055	11SKU385130	11SKU460115	11SKU550055	11SKU640025	11SKU715085
11SKU325070	11SKU385145	11SKU475025	11SKU550070	11SKU640040	
11SKU325085	11SKU385160	11SKU475040	11SKU550085	11SKU640055	

## PRODUCTION BLOCK 2B

The 2,310 tiles delivered with production block 2b are listed below.

10SEF595995	10SEF700950	10SEF775920	10SEF850485	10SEF865665	10SEF880635
10SEF610965	10SEF700965	10SEF790830	10SEF850500	10SEF865680	10SEF880650
10SEF610980	10SEF700980	10SEF790845	10SEF850515	10SEF865695	10SEF880665
10SEF610995	10SEF715860	10SEF790860	10SEF850665	10SEF865710	10SEF880680
10SEF625950	10SEF715875	10SEF790875	10SEF850680	10SEF865725	10SEF880695
10SEF625965	10SEF715890	10SEF790890	10SEF850695	10SEF865740	10SEF880710
10SEF625980	10SEF715905	10SEF790905	10SEF850710	10SEF865755	10SEF880725
10SEF625995	10SEF715920	10SEF790920	10SEF850725	10SEF865770	10SEF880740
10SEF640935	10SEF715935	10SEF805830	10SEF850740	10SEF865785	10SEF880755
10SEF640950	10SEF715950	10SEF805845	10SEF850755	10SEF865800	10SEF880770
10SEF640965	10SEF715965	10SEF805860	10SEF850770	10SEF865815	10SEF880785
10SEF640980	10SEF730860	10SEF805875	10SEF850785	10SEF865830	10SEF880800
10SEF640995	10SEF730875	10SEF805890	10SEF850800	10SEF865845	10SEF880815
10SEF655920	10SEF730890	10SEF805905	10SEF850815	10SEF865860	10SEF880830
10SEF655935	10SEF730905	10SEF820785	10SEF850830	10SEF865875	10SEF880845
10SEF655950	10SEF730920	10SEF820800	10SEF850845	10SEF865890	10SEF880860
10SEF655965	10SEF730935	10SEF820815	10SEF850860	10SEF865905	10SEF880875
10SEF655980	10SEF730950	10SEF820830	10SEF850875	10SEF865920	10SEF880890
10SEF655995	10SEF730965	10SEF820845	10SEF850890	10SEF865935	10SEF880905
10SEF670905	10SEF745845	10SEF820860	10SEF850905	10SEF865950	10SEF880920
10SEF670920	10SEF745860	10SEF820875	10SEF850920	10SEF880350	10SEF880935
10SEF670935	10SEF745875	10SEF820890	10SEF850935	10SEF880365	10SEF880950
10SEF670950	10SEF745890	10SEF820905	10SEF850950	10SEF880380	10SEF895305
10SEF670965	10SEF745905	10SEF835725	10SEF850965	10SEF880395	10SEF895320
10SEF670980	10SEF745920	10SEF835740	10SEF865395	10SEF880410	10SEF895335
10SEF670995	10SEF745935	10SEF835755	10SEF865410	10SEF880425	10SEF895350
10SEF685890	10SEF745950	10SEF835770	10SEF865425	10SEF880440	10SEF895365
10SEF685905	10SEF760845	10SEF835785	10SEF865440	10SEF880455	10SEF895380
10SEF685920	10SEF760860	10SEF835800	10SEF865455	10SEF880470	10SEF895395
10SEF685935	10SEF760875	10SEF835815	10SEF865470	10SEF880485	10SEF895410
10SEF685950	10SEF760890	10SEF835830	10SEF865485	10SEF880500	10SEF895425
10SEF685965	10SEF760905	10SEF835845	10SEF865500	10SEF880515	10SEF895440
10SEF685980	10SEF760920	10SEF835860	10SEF865515	10SEF880530	10SEF895455
10SEF685995	10SEF760935	10SEF835875	10SEF865530	10SEF880545	10SEF895470
10SEF700875	10SEF775845	10SEF835890	10SEF865545	10SEF880560	10SEF895485
10SEF700890	10SEF775860	10SEF835905	10SEF865605	10SEF880575	10SEF895500
10SEF700905	10SEF775875	10SEF835950	10SEF865620	10SEF880590	10SEF895515
10SEF700920	10SEF775890	10SEF850455	10SEF865635	10SEF880605	10SEF895530
10SEF700935	10SEF775905	10SEF850470	10SEF865650	10SEF880620	10SEF895545

Coastal California Data Merge

TO# 11

October 31, 2013

Page 33 of 57

10SEF895560	10SEF910425	10SEF925215	10SEF925830	10SEF940605	10SEF955380
10SEF895575	10SEF910440	10SEF925230	10SEF925845	10SEF940620	10SEF955395
10SEF895590	10SEF910455	10SEF925245	10SEF925860	10SEF940635	10SEF955410
10SEF895605	10SEF910470	10SEF925260	10SEF925875	10SEF940650	10SEF955425
10SEF895620	10SEF910485	10SEF925275	10SEF925890	10SEF940665	10SEF955440
10SEF895635	10SEF910500	10SEF925290	10SEF925905	10SEF940680	10SEF955455
10SEF895650	10SEF910515	10SEF925305	10SEF925920	10SEF940695	10SEF955470
10SEF895665	10SEF910530	10SEF925320	10SEF925935	10SEF940710	10SEF955515
10SEF895680	10SEF910545	10SEF925335	10SEF925950	10SEF940725	10SEF955530
10SEF895695	10SEF910560	10SEF925350	10SEF940125	10SEF940740	10SEF955545
10SEF895710	10SEF910575	10SEF925365	10SEF940140	10SEF940755	10SEF955560
10SEF895725	10SEF910590	10SEF925380	10SEF940155	10SEF940770	10SEF955575
10SEF895740	10SEF910605	10SEF925395	10SEF940170	10SEF940785	10SEF955590
10SEF895755	10SEF910620	10SEF925410	10SEF940185	10SEF940800	10SEF955605
10SEF895770	10SEF910635	10SEF925425	10SEF940200	10SEF940815	10SEF955620
10SEF895785	10SEF910650	10SEF925440	10SEF940215	10SEF940830	10SEF955635
10SEF895800	10SEF910665	10SEF925455	10SEF940230	10SEF940845	10SEF955650
10SEF895815	10SEF910680	10SEF925470	10SEF940245	10SEF940860	10SEF955665
10SEF895830	10SEF910695	10SEF925485	10SEF940260	10SEF940875	10SEF955680
10SEF895845	10SEF910710	10SEF925500	10SEF940275	10SEF940890	10SEF955695
10SEF895860	10SEF910725	10SEF925515	10SEF940290	10SEF940905	10SEF955710
10SEF895875	10SEF910740	10SEF925530	10SEF940305	10SEF940920	10SEF955725
10SEF895890	10SEF910755	10SEF925545	10SEF940320	10SEF940935	10SEF955740
10SEF895905	10SEF910770	10SEF925560	10SEF940335	10SEF955110	10SEF955755
10SEF895920	10SEF910785	10SEF925575	10SEF940350	10SEF955125	10SEF955770
10SEF895935	10SEF910800	10SEF925590	10SEF940365	10SEF955140	10SEF955785
10SEF895950	10SEF910815	10SEF925605	10SEF940380	10SEF955155	10SEF955800
10SEF910215	10SEF910830	10SEF925620	10SEF940395	10SEF955170	10SEF955815
10SEF910230	10SEF910845	10SEF925635	10SEF940410	10SEF955185	10SEF955830
10SEF910245	10SEF910860	10SEF925650	10SEF940425	10SEF955200	10SEF955845
10SEF910260	10SEF910875	10SEF925665	10SEF940440	10SEF955215	10SEF955860
10SEF910275	10SEF910890	10SEF925680	10SEF940455	10SEF955230	10SEF955875
10SEF910290	10SEF910905	10SEF925695	10SEF940470	10SEF955245	10SEF955890
10SEF910305	10SEF910920	10SEF925710	10SEF940485	10SEF955260	10SEF955905
10SEF910320	10SEF910935	10SEF925725	10SEF940500	10SEF955275	10SEF955920
10SEF910335	10SEF910950	10SEF925740	10SEF940515	10SEF955290	10SEF955935
10SEF910350	10SEF925140	10SEF925755	10SEF940530	10SEF955305	10SEF970095
10SEF910365	10SEF925155	10SEF925770	10SEF940545	10SEF955320	10SEF970110
10SEF910380	10SEF925170	10SEF925785	10SEF940560	10SEF955335	10SEF970125
10SEF910395	10SEF925185	10SEF925800	10SEF940575	10SEF955350	10SEF970140
10SEF910410	10SEF925200	10SEF925815	10SEF940590	10SEF955365	10SEF970155

Coastal California Data Merge

TO# 11

October 31, 2013

Page 34 of 57

10SEF970170	10SEF970860	10SEF985740	10SEG625055	10SFD945985	10SFE195915
10SEF970185	10SEF970875	10SEF985755	10SEG640010	10SFD960895	10SFE195930
10SEF970200	10SEF970890	10SEF985770	10SEG640025	10SFD960910	10SFE195945
10SEF970215	10SEF970905	10SEF985785	10SEG640040	10SFD960925	10SFE195960
10SEF970230	10SEF970920	10SEF985800	10SEG640055	10SFD960940	10SFE195975
10SEF970245	10SEF970935	10SEF985815	10SEG655010	10SFD960955	10SFE195990
10SEF970260	10SEF985080	10SEF985830	10SEG655025	10SFD960970	10SFE210855
10SEF970275	10SEF985095	10SEF985845	10SEG655040	10SFD960985	10SFE210870
10SEF970290	10SEF985110	10SEF985860	10SEG670010	10SFD975880	10SFE210885
10SEF970305	10SEF985125	10SEF985875	10SEG670025	10SFD975895	10SFE210900
10SEF970320	10SEF985140	10SEF985890	10SEG685010	10SFD975910	10SFE210915
10SEF970335	10SEF985155	10SEF985905	10SFD855985	10SFD975925	10SFE210930
10SEF970350	10SEF985170	10SEF985920	10SFD870955	10SFD975940	10SFE210945
10SEF970365	10SEF985185	10SEG520040	10SFD870970	10SFD975955	10SFE210960
10SEF970410	10SEF985200	10SEG520055	10SFD870985	10SFD975970	10SFE210975
10SEF970425	10SEF985215	10SEG535025	10SFD885940	10SFD975985	10SFE210990
10SEF970440	10SEF985230	10SEG535040	10SFD885955	10SFD990880	10SFE225825
10SEF970500	10SEF985245	10SEG535055	10SFD885970	10SFD990895	10SFE225840
10SEF970515	10SEF985260	10SEG550010	10SFD885985	10SFD990910	10SFE225855
10SEF970530	10SEF985275	10SEG550025	10SFD900925	10SFD990925	10SFE225870
10SEF970545	10SEF985290	10SEG550040	10SFD900940	10SFD990940	10SFE225885
10SEF970560	10SEF985305	10SEG550055	10SFD900955	10SFD990955	10SFE225900
10SEF970575	10SEF985425	10SEG565010	10SFD900970	10SFD990970	10SFE225915
10SEF970590	10SEF985440	10SEG565025	10SFD900985	10SFE120990	10SFE225930
10SEF970605	10SEF985485	10SEG565040	10SFD915925	10SFE135975	10SFE225945
10SEF970620	10SEF985500	10SEG565055	10SFD915940	10SFE135990	10SFE225960
10SEF970635	10SEF985515	10SEG580010	10SFD915955	10SFE150960	10SFE225975
10SEF970650	10SEF985530	10SEG580025	10SFD915970	10SFE150975	10SFE225990
10SEF970665	10SEF985545	10SEG580040	10SFD915985	10SFE150990	10SFE240810
10SEF970680	10SEF985560	10SEG580055	10SFD930910	10SFE165945	10SFE240825
10SEF970695	10SEF985575	10SEG595010	10SFD930925	10SFE165960	10SFE240840
10SEF970710	10SEF985590	10SEG595025	10SFD930940	10SFE165975	10SFE240855
10SEF970725	10SEF985605	10SEG595040	10SFD930955	10SFE165990	10SFE240870
10SEF970740	10SEF985620	10SEG595055	10SFD930970	10SFE180915	10SFE240885
10SEF970755	10SEF985635	10SEG610010	10SFD930985	10SFE180930	10SFE240900
10SEF970770	10SEF985650	10SEG610025	10SFD945895	10SFE180945	10SFE240915
10SEF970785	10SEF985665	10SEG610040	10SFD945910	10SFE180960	10SFE240930
10SEF970800	10SEF985680	10SEG610055	10SFD945925	10SFE180975	10SFE240945
10SEF970815	10SEF985695	10SEG625010	10SFD945940	10SFE180990	10SFE240960
10SEF970830	10SEF985710	10SEG625025	10SFD945955	10SFE195885	10SFE240975
10SEF970845	10SEF985725	10SEG625040	10SFD945970	10SFE195900	10SFE255810

10SFE255825	10SFE315795	10SFE360750	10SFE420615	10SFE480510	10SFE525465
10SFE255840	10SFE315810	10SFE360765	10SFE420630	10SFE480525	10SFE525480
10SFE255855	10SFE315825	10SFE360780	10SFE420645	10SFE480540	10SFE525495
10SFE255870	10SFE315840	10SFE360795	10SFE420660	10SFE480555	10SFE525510
10SFE255885	10SFE315855	10SFE360810	10SFE420675	10SFE480570	10SFE525525
10SFE255900	10SFE315870	10SFE360825	10SFE420690	10SFE480585	10SFE525540
10SFE255915	10SFE330675	10SFE360840	10SFE420705	10SFE480600	10SFE525555
10SFE255930	10SFE330690	10SFE375645	10SFE435570	10SFE480615	10SFE525570
10SFE255945	10SFE330705	10SFE375660	10SFE435585	10SFE480630	10SFE525585
10SFE270810	10SFE330720	10SFE375675	10SFE435600	10SFE480645	10SFE525600
10SFE270825	10SFE330735	10SFE375690	10SFE435615	10SFE495435	10SFE540420
10SFE270840	10SFE330750	10SFE375705	10SFE435630	10SFE495450	10SFE540435
10SFE270855	10SFE330765	10SFE375720	10SFE435645	10SFE495465	10SFE540450
10SFE270870	10SFE330780	10SFE375735	10SFE435660	10SFE495480	10SFE540465
10SFE270885	10SFE330795	10SFE375750	10SFE435675	10SFE495495	10SFE540480
10SFE270900	10SFE330810	10SFE375765	10SFE435690	10SFE495510	10SFE540495
10SFE270915	10SFE330825	10SFE375780	10SFE450540	10SFE495525	10SFE540510
10SFE270930	10SFE330840	10SFE375795	10SFE450555	10SFE495540	10SFE540525
10SFE285810	10SFE330855	10SFE375810	10SFE450570	10SFE495555	10SFE540540
10SFE285825	10SFE330870	10SFE390615	10SFE450585	10SFE495570	10SFE555405
10SFE285840	10SFE345660	10SFE390630	10SFE450600	10SFE495585	10SFE555420
10SFE285855	10SFE345675	10SFE390645	10SFE450615	10SFE495600	10SFE555435
10SFE285870	10SFE345690	10SFE390660	10SFE450630	10SFE495615	10SFE555450
10SFE285885	10SFE345705	10SFE390675	10SFE450645	10SFE495630	10SFE555465
10SFE285900	10SFE345720	10SFE390690	10SFE450660	10SFE510420	10SFE555480
10SFE300750	10SFE345735	10SFE390705	10SFE450675	10SFE510435	10SFE555495
10SFE300765	10SFE345750	10SFE390720	10SFE465495	10SFE510450	10SFE555510
10SFE300780	10SFE345765	10SFE390735	10SFE465510	10SFE510465	10SFE555525
10SFE300795	10SFE345780	10SFE390750	10SFE465525	10SFE510480	10SFE570405
10SFE300810	10SFE345795	10SFE390765	10SFE465540	10SFE510495	10SFE570420
10SFE300825	10SFE345810	10SFE405600	10SFE465555	10SFE510510	10SFE570435
10SFE300840	10SFE345825	10SFE405615	10SFE465570	10SFE510525	10SFE570450
10SFE300855	10SFE345840	10SFE405630	10SFE465585	10SFE510540	10SFE570465
10SFE300870	10SFE345855	10SFE405645	10SFE465600	10SFE510555	10SFE570480
10SFE315690	10SFE360645	10SFE405660	10SFE465615	10SFE510570	10SFE585405
10SFE315705	10SFE360660	10SFE405675	10SFE465630	10SFE510585	10SFE585420
10SFE315720	10SFE360675	10SFE405690	10SFE465645	10SFE510600	10SFE585435
10SFE315735	10SFE360690	10SFE405705	10SFE465660	10SFE510615	10SFE585450
10SFE315750	10SFE360705	10SFE405720	10SFE480465	10SFE525420	10SFE585465
10SFE315765	10SFE360720	10SFE420585	10SFE480480	10SFE525435	10SFE585480
10SFE315780	10SFE360735	10SFE420600	10SFE480495	10SFE525450	10SFE600390

10SFE600405	10SFE675315	10SFE720405	10SFE795240	10SFE855255	10SFE900030
10SFE600420	10SFE675330	10SFE735240	10SFE795255	10SFE855270	10SFE900045
10SFE600435	10SFE675345	10SFE735255	10SFE795270	10SFE870000	10SFE900060
10SFE600450	10SFE675360	10SFE735270	10SFE795285	10SFE870015	10SFE900075
10SFE600465	10SFE675375	10SFE735285	10SFE795300	10SFE870030	10SFE900090
10SFE600480	10SFE675390	10SFE735300	10SFE810195	10SFE870045	10SFE900105
10SFE615390	10SFE675405	10SFE735315	10SFE810210	10SFE870060	10SFE900120
10SFE615405	10SFE675420	10SFE735330	10SFE810225	10SFE870075	10SFE900135
10SFE615420	10SFE675435	10SFE735345	10SFE810240	10SFE870090	10SFE900150
10SFE615435	10SFE675450	10SFE735360	10SFE810255	10SFE870105	10SFE900165
10SFE615450	10SFE690285	10SFE735375	10SFE810270	10SFE870120	10SFE900180
10SFE615465	10SFE690300	10SFE750225	10SFE825180	10SFE870135	10SFE900195
10SFE630360	10SFE690315	10SFE750240	10SFE825195	10SFE870150	10SFE900210
10SFE630375	10SFE690330	10SFE750255	10SFE825210	10SFE870165	10SFE900225
10SFE630390	10SFE690345	10SFE750270	10SFE825225	10SFE870180	10SFE900240
10SFE630405	10SFE690360	10SFE750285	10SFE825240	10SFE870195	10SFE900255
10SFE630420	10SFE690375	10SFE750300	10SFE825255	10SFE870210	10SFE915000
10SFE630435	10SFE690390	10SFE750315	10SFE825270	10SFE870225	10SFE915015
10SFE630450	10SFE690405	10SFE750330	10SFE825285	10SFE870240	10SFE915030
10SFE630465	10SFE690420	10SFE750345	10SFE840000	10SFE870255	10SFE915045
10SFE645330	10SFE705270	10SFE765210	10SFE840015	10SFE870270	10SFE915060
10SFE645345	10SFE705285	10SFE765225	10SFE840030	10SFE885000	10SFE915075
10SFE645360	10SFE705300	10SFE765240	10SFE840045	10SFE885015	10SFE915090
10SFE645375	10SFE705315	10SFE765255	10SFE840180	10SFE885030	10SFE915105
10SFE645390	10SFE705330	10SFE765270	10SFE840195	10SFE885045	10SFE915120
10SFE645405	10SFE705345	10SFE765285	10SFE840210	10SFE885060	10SFE915135
10SFE645420	10SFE705360	10SFE765300	10SFE840225	10SFE885075	10SFE915150
10SFE645435	10SFE705375	10SFE765315	10SFE840240	10SFE885090	10SFE915165
10SFE645450	10SFE705390	10SFE765330	10SFE840255	10SFE885105	10SFE915180
10SFE645465	10SFE705405	10SFE780195	10SFE840270	10SFE885120	10SFE915195
10SFE660315	10SFE705420	10SFE780210	10SFE855000	10SFE885135	10SFE915210
10SFE660330	10SFE720255	10SFE780225	10SFE855015	10SFE885150	10SFE915225
10SFE660345	10SFE720270	10SFE780240	10SFE855030	10SFE885165	10SFE915240
10SFE660360	10SFE720285	10SFE780255	10SFE855045	10SFE885180	10SFE915255
10SFE660375	10SFE720300	10SFE780270	10SFE855060	10SFE885195	10SFE930000
10SFE660390	10SFE720315	10SFE780285	10SFE855075	10SFE885210	10SFE930015
10SFE660405	10SFE720330	10SFE780300	10SFE855180	10SFE885225	10SFE930030
10SFE660420	10SFE720345	10SFE780315	10SFE855195	10SFE885240	10SFE930045
10SFE660435	10SFE720360	10SFE795195	10SFE855210	10SFE885255	10SFE930060
10SFE660450	10SFE720375	10SFE795210	10SFE855225	10SFE900000	10SFE930075
10SFE675300	10SFE720390	10SFE795225	10SFE855240	10SFE900015	10SFE930090



10SFE930105	10SFF000125	10SFF015095	10SFF030155	10SFF045590	10SFF060770
10SFE930120	10SFF000140	10SFF015110	10SFF030170	10SFF045605	10SFF060785
10SFE930135	10SFF000155	10SFF015125	10SFF030485	10SFF045620	10SFF060800
10SFE930150	10SFF000170	10SFF015140	10SFF030500	10SFF045635	10SFF060815
10SFE930165	10SFF000185	10SFF015155	10SFF030515	10SFF045650	10SFF060830
10SFE930180	10SFF000200	10SFF015170	10SFF030530	10SFF045665	10SFF060845
10SFE930195	10SFF000215	10SFF015485	10SFF030545	10SFF045680	10SFF060860
10SFE930210	10SFF000230	10SFF015500	10SFF030560	10SFF045695	10SFF060875
10SFE930225	10SFF000470	10SFF015515	10SFF030575	10SFF045710	10SFF075020
10SFE945000	10SFF000485	10SFF015530	10SFF030590	10SFF045725	10SFF075035
10SFE945090	10SFF000500	10SFF015545	10SFF030605	10SFF045740	10SFF075050
10SFE945105	10SFF000515	10SFF015560	10SFF030620	10SFF045755	10SFF075065
10SFE945120	10SFF000530	10SFF015575	10SFF030635	10SFF045770	10SFF075080
10SFE945135	10SFF000545	10SFF015590	10SFF030650	10SFF045785	10SFF075095
10SFE945150	10SFF000560	10SFF015605	10SFF030665	10SFF045800	10SFF075110
10SFE945165	10SFF000575	10SFF015620	10SFF030680	10SFF045815	10SFF075590
10SFE945180	10SFF000590	10SFF015635	10SFF030695	10SFF045830	10SFF075605
10SFE945195	10SFF000605	10SFF015650	10SFF030710	10SFF045845	10SFF075620
10SFE945210	10SFF000620	10SFF015665	10SFF030725	10SFF045860	10SFF075635
10SFE960000	10SFF000635	10SFF015680	10SFF030740	10SFF045875	10SFF075650
10SFE960090	10SFF000650	10SFF015695	10SFF030755	10SFF060035	10SFF075665
10SFE960105	10SFF000665	10SFF015710	10SFF030770	10SFF060050	10SFF075680
10SFE960120	10SFF000680	10SFF015725	10SFF030785	10SFF060065	10SFF075695
10SFE960135	10SFF000695	10SFF015740	10SFF030800	10SFF060080	10SFF075710
10SFE960150	10SFF000710	10SFF015755	10SFF030815	10SFF060095	10SFF075725
10SFE960165	10SFF000725	10SFF015770	10SFF030830	10SFF060110	10SFF075740
10SFE975090	10SFF000740	10SFF015785	10SFF030845	10SFF060125	10SFF075755
10SFE975105	10SFF000755	10SFF015800	10SFF030860	10SFF060560	10SFF075770
10SFE975120	10SFF000770	10SFF015815	10SFF045035	10SFF060575	10SFF075785
10SFE975135	10SFF000785	10SFF015830	10SFF045050	10SFF060590	10SFF075800
10SFE975150	10SFF000800	10SFF015845	10SFF045065	10SFF060605	10SFF075815
10SFE990075	10SFF000815	10SFF015860	10SFF045080	10SFF060620	10SFF075830
10SFE990090	10SFF000830	10SFF015875	10SFF045095	10SFF060635	10SFF075845
10SFE990105	10SFF000845	10SFF015890	10SFF045110	10SFF060650	10SFF075860
10SFE990120	10SFF000860	10SFF030050	10SFF045125	10SFF060665	10SFF075875
10SFE990135	10SFF000875	10SFF030065	10SFF045140	10SFF060680	10SFF090020
10SFE990150	10SFF000890	10SFF030080	10SFF045155	10SFF060695	10SFF090035
10SFF000065	10SFF000905	10SFF030095	10SFF045530	10SFF060710	10SFF090050
10SFF000080	10SFF015050	10SFF030110	10SFF045545	10SFF060725	10SFF090065
10SFF000095	10SFF015065	10SFF030125	10SFF045560	10SFF060740	10SFF090080
10SFF000110	10SFF015080	10SFF030140	10SFF045575	10SFF060755	10SFF090095

Coastal California Data Merge

TO# 11

October 31, 2013

Page 38 of 57

10SFF090110	10SFF105770	10SFF135530	10SFF150740	10SFF180680	10SGD035895
10SFF090590	10SFF105785	10SFF135545	10SFF150755	10SFF180695	10SGD035910
10SFF090605	10SFF105800	10SFF135560	10SFF150770	10SFF180710	10SGD035925
10SFF090620	10SFF105815	10SFF135575	10SFF150785	10SFF180725	10SGD035940
10SFF090635	10SFF105830	10SFF135590	10SFF150800	10SFF180740	10SGD035955
10SFF090650	10SFF105845	10SFF135605	10SFF150815	10SFF195005	10SGD050865
10SFF090665	10SFF105860	10SFF135620	10SFF165005	10SFF195020	10SGD050880
10SFF090680	10SFF105875	10SFF135635	10SFF165020	10SFF195035	10SGD050895
10SFF090695	10SFF120005	10SFF135650	10SFF165035	10SFF195530	10SGD050910
10SFF090710	10SFF120020	10SFF135665	10SFF165050	10SFF195545	10SGD050925
10SFF090725	10SFF120035	10SFF135680	10SFF165065	10SFF195590	10SGD050940
10SFF090740	10SFF120050	10SFF135695	10SFF165530	10SFF195605	10SGD050955
10SFF090755	10SFF120065	10SFF135710	10SFF165545	10SFF195620	10SGD050970
10SFF090770	10SFF120080	10SFF135725	10SFF165560	10SFF195680	10SGD065610
10SFF090785	10SFF120095	10SFF135740	10SFF165575	10SFF195695	10SGD065625
10SFF090800	10SFF120560	10SFF135755	10SFF165590	10SFF195710	10SGD065640
10SFF090815	10SFF120575	10SFF135770	10SFF165605	10SFF210005	10SGD065655
10SFF090830	10SFF120590	10SFF135785	10SFF165620	10SFF210020	10SGD065670
10SFF090845	10SFF120605	10SFF135800	10SFF165635	10SFF210590	10SGD065685
10SFF090860	10SFF120620	10SFF135815	10SFF165650	10SFF210605	10SGD065700
10SFF090875	10SFF120635	10SFF135830	10SFF165665	10SFF210620	10SGD065865
10SFF105005	10SFF120650	10SFF135845	10SFF165680	10SFF225005	10SGD065880
10SFF105020	10SFF120665	10SFF150005	10SFF165695	10SFF225590	10SGD065895
10SFF105035	10SFF120680	10SFF150020	10SFF165710	10SFF225605	10SGD065910
10SFF105050	10SFF120695	10SFF150035	10SFF165725	10SFF225620	10SGD065925
10SFF105065	10SFF120710	10SFF150050	10SFF165740	10SGD005865	10SGD065940
10SFF105080	10SFF120725	10SFF150065	10SFF165755	10SGD005880	10SGD065955
10SFF105095	10SFF120740	10SFF150530	10SFF165770	10SGD005895	10SGD065970
10SFF105575	10SFF120755	10SFF150545	10SFF165785	10SGD005910	10SGD080595
10SFF105590	10SFF120770	10SFF150560	10SFF180005	10SGD005925	10SGD080610
10SFF105605	10SFF120785	10SFF150575	10SFF180020	10SGD005940	10SGD080625
10SFF105620	10SFF120800	10SFF150590	10SFF180035	10SGD005955	10SGD080640
10SFF105635	10SFF120815	10SFF150605	10SFF180050	10SGD020865	10SGD080655
10SFF105650	10SFF120830	10SFF150620	10SFF180530	10SGD020880	10SGD080670
10SFF105665	10SFF120845	10SFF150635	10SFF180545	10SGD020895	10SGD080685
10SFF105680	10SFF135005	10SFF150650	10SFF180590	10SGD020910	10SGD080700
10SFF105695	10SFF135020	10SFF150665	10SFF180605	10SGD020925	10SGD080715
10SFF105710	10SFF135035	10SFF150680	10SFF180620	10SGD020940	10SGD080730
10SFF105725	10SFF135050	10SFF150695	10SFF180635	10SGD020955	10SGD080745
10SFF105740	10SFF135065	10SFF150710	10SFF180650	10SGD035865	10SGD080865
10SFF105755	10SFF135080	10SFF150725	10SFF180665	10SGD035880	10SGD080880

10SGDo80895	10SGDo95925	10SGD110820	10SGD125685	10SGD140550	10SGD155430
10SGDo80910	10SGDo95940	10SGD110835	10SGD125700	10SGD140565	10SGD155445
10SGDo80925	10SGDo95955	10SGD110850	10SGD125715	10SGD140580	10SGD155460
10SGDo80940	10SGDo95970	10SGD110865	10SGD125730	10SGD140595	10SGD155475
10SGDo80955	10SGD110220	10SGD110880	10SGD125745	10SGD140610	10SGD155490
10SGDo80970	10SGD110235	10SGD110895	10SGD125760	10SGD140625	10SGD155505
10SGDo95250	10SGD110250	10SGD110910	10SGD125775	10SGD140640	10SGD155520
10SGDo95265	10SGD110265	10SGD110925	10SGD125790	10SGD140655	10SGD155535
10SGDo95280	10SGD110280	10SGD110940	10SGD125805	10SGD140670	10SGD155550
10SGDo95295	10SGD110295	10SGD125205	10SGD125820	10SGD140685	10SGD155565
10SGDo95310	10SGD110310	10SGD125220	10SGD125835	10SGD140700	10SGD155580
10SGDo95325	10SGD110325	10SGD125235	10SGD125850	10SGD140715	10SGD155595
10SGDo95340	10SGD110340	10SGD125250	10SGD125865	10SGD140730	10SGD155610
10SGDo95445	10SGD110355	10SGD125265	10SGD125880	10SGD140745	10SGD155625
10SGDo95460	10SGD110370	10SGD125280	10SGD125895	10SGD140760	10SGD155640
10SGDo95475	10SGD110430	10SGD125295	10SGD125910	10SGD140775	10SGD155685
10SGDo95490	10SGD110445	10SGD125310	10SGD125925	10SGD140790	10SGD155700
10SGDo95505	10SGD110460	10SGD125325	10SGD125940	10SGD140805	10SGD155715
10SGDo95580	10SGD110475	10SGD125340	10SGD140205	10SGD140820	10SGD155730
10SGDo95595	10SGD110490	10SGD125355	10SGD140220	10SGD140835	10SGD155745
10SGDo95610	10SGD110505	10SGD125370	10SGD140235	10SGD140850	10SGD155760
10SGDo95625	10SGD110520	10SGD125385	10SGD140250	10SGD140865	10SGD155775
10SGDo95640	10SGD110535	10SGD125400	10SGD140265	10SGD140880	10SGD155790
10SGDo95655	10SGD110550	10SGD125415	10SGD140280	10SGD140895	10SGD155805
10SGDo95670	10SGD110565	10SGD125430	10SGD140295	10SGD140910	10SGD155820
10SGDo95685	10SGD110580	10SGD125445	10SGD140310	10SGD140925	10SGD155835
10SGDo95700	10SGD110595	10SGD125460	10SGD140325	10SGD155205	10SGD155850
10SGDo95715	10SGD110610	10SGD125475	10SGD140340	10SGD155220	10SGD155865
10SGDo95730	10SGD110625	10SGD125490	10SGD140355	10SGD155235	10SGD155880
10SGDo95745	10SGD110640	10SGD125505	10SGD140370	10SGD155250	10SGD155895
10SGDo95760	10SGD110655	10SGD125520	10SGD140385	10SGD155265	10SGD155910
10SGDo95775	10SGD110670	10SGD125535	10SGD140400	10SGD155280	10SGD155925
10SGDo95790	10SGD110685	10SGD125550	10SGD140415	10SGD155295	10SGD170190
10SGDo95805	10SGD110700	10SGD125565	10SGD140430	10SGD155310	10SGD170205
10SGDo95820	10SGD110715	10SGD125580	10SGD140445	10SGD155325	10SGD170220
10SGDo95835	10SGD110730	10SGD125595	10SGD140460	10SGD155340	10SGD170235
10SGDo95850	10SGD110745	10SGD125610	10SGD140475	10SGD155355	10SGD170250
10SGDo95865	10SGD110760	10SGD125625	10SGD140490	10SGD155370	10SGD170265
10SGDo95880	10SGD110775	10SGD125640	10SGD140505	10SGD155385	10SGD170280
10SGDo95895	10SGD110790	10SGD125655	10SGD140520	10SGD155400	10SGD170295
10SGDo95910	10SGD110805	10SGD125670	10SGD140535	10SGD155415	10SGD170310

10SGD170325	10SGD185250	10SGD200595	10SGD245415	10SGD305115	10SGD395130
10SGD170340	10SGD185265	10SGD200760	10SGD260115	10SGD305130	10SGD395145
10SGD170355	10SGD185325	10SGD200775	10SGD260130	10SGD305145	10SGD395160
10SGD170370	10SGD185340	10SGD200790	10SGD260145	10SGD305160	10SGD410100
10SGD170385	10SGD185355	10SGD200820	10SGD260160	10SGD305175	10SGD410115
10SGD170400	10SGD185370	10SGD200835	10SGD260175	10SGD305190	10SGD410130
10SGD170415	10SGD185385	10SGD200850	10SGD260190	10SGD305205	10SGD410145
10SGD170430	10SGD185400	10SGD215190	10SGD260205	10SGD320085	10SGD410160
10SGD170445	10SGD185415	10SGD215205	10SGD260220	10SGD320100	10SGD410175
10SGD170460	10SGD185430	10SGD215220	10SGD260235	10SGD320115	10SGD425100
10SGD170475	10SGD185445	10SGD215235	10SGD260250	10SGD320130	10SGD425115
10SGD170490	10SGD185460	10SGD215250	10SGD260370	10SGD320145	10SGD425130
10SGD170505	10SGD185505	10SGD215265	10SGD260385	10SGD320160	10SGD425145
10SGD170520	10SGD185520	10SGD215370	10SGD260400	10SGD320175	10SGD425160
10SGD170535	10SGD185535	10SGD215385	10SGD260415	10SGD320190	10SGD425175
10SGD170550	10SGD185550	10SGD215400	10SGD275100	10SGD335085	10SGD440100
10SGD170565	10SGD185565	10SGD215415	10SGD275115	10SGD335100	10SGD440115
10SGD170580	10SGD185580	10SGD230175	10SGD275130	10SGD335115	10SGD440130
10SGD170595	10SGD185595	10SGD230190	10SGD275145	10SGD335130	10SGD440145
10SGD170610	10SGD185610	10SGD230205	10SGD275160	10SGD335145	10SGD440160
10SGD170625	10SGD185760	10SGD230220	10SGD275175	10SGD335160	10SGD440175
10SGD170640	10SGD185775	10SGD230235	10SGD275190	10SGD350085	10SGD455100
10SGD170685	10SGD185790	10SGD230250	10SGD275205	10SGD350100	10SGD455115
10SGD170700	10SGD185805	10SGD230265	10SGD275220	10SGD350115	10SGD455130
10SGD170715	10SGD185820	10SGD230370	10SGD275235	10SGD350130	10SGD455145
10SGD170730	10SGD185835	10SGD230385	10SGD275250	10SGD350145	10SGD455160
10SGD170745	10SGD185850	10SGD230400	10SGD275385	10SGD350160	10SGD455175
10SGD170760	10SGD185865	10SGD230415	10SGD275400	10SGD365085	10SGD470100
10SGD170775	10SGD200190	10SGD245145	10SGD290085	10SGD365100	10SGD470115
10SGD170790	10SGD200205	10SGD245160	10SGD290100	10SGD365115	10SGD470130
10SGD170805	10SGD200220	10SGD245175	10SGD290115	10SGD365130	10SGD470145
10SGD170820	10SGD200235	10SGD245190	10SGD290130	10SGD365145	10SGD470160
10SGD170835	10SGD200250	10SGD245205	10SGD290145	10SGD365160	10SGD470175
10SGD170850	10SGD200265	10SGD245220	10SGD290160	10SGD380085	10SGD470190
10SGD170865	10SGD200280	10SGD245235	10SGD290175	10SGD380100	10SGD485115
10SGD170880	10SGD200370	10SGD245250	10SGD290190	10SGD380115	10SGD485130
10SGD170895	10SGD200385	10SGD245265	10SGD290205	10SGD380130	10SGD485145
10SGD185190	10SGD200400	10SGD245355	10SGD290220	10SGD380145	10SGD485160
10SGD185205	10SGD200415	10SGD245370	10SGD290235	10SGD380160	10SGD485175
10SGD185220	10SGD200430	10SGD245385	10SGD305085	10SGD395100	10SGD485190
10SGD185235	10SGD200445	10SGD245400	10SGD305100	10SGD395115	10SGD500115

Coastal California Data Merge

TO# 11

October 31, 2013

Page 41 of 57

10SGD500130	10SGD590190	10SGD680160	10SGE020075
10SGD500145	10SGD605115	10SGD680175	10SGE020090
10SGD500160	10SGD605130	10SGD695100	
10SGD500175	10SGD605145	10SGD695115	
10SGD500190	10SGD605160	10SGD695130	
10SGD515115	10SGD605175	10SGD695145	
10SGD515130	10SGD605190	10SGD695160	
10SGD515145	10SGD620115	10SGD695175	
10SGD515160	10SGD620130	10SGD710100	
10SGD515175	10SGD620145	10SGD710115	
10SGD530115	10SGD620160	10SGD710130	
10SGD530130	10SGD620175	10SGD710145	
10SGD530145	10SGD620190	10SGD710160	
10SGD530160	10SGD635115	10SGD710175	
10SGD530175	10SGD635130	10SGD725100	
10SGD545115	10SGD635145	10SGD725115	
10SGD545130	10SGD635160	10SGD725130	
10SGD545145	10SGD635175	10SGD725145	
10SGD545160	10SGD635190	10SGD725160	
10SGD545175	10SGD650100	10SGD725175	
10SGD560115	10SGD650115	10SGD740100	
10SGD560130	10SGD650130	10SGD740115	
10SGD560145	10SGD650145	10SGD740130	
10SGD560160	10SGD650160	10SGD740145	
10SGD560175	10SGD650175	10SGD740160	
10SGD575115	10SGD650190	10SGD740175	
10SGD575130	10SGD665100	10SGD755085	
10SGD575145	10SGD665115	10SGD755100	
10SGD575160	10SGD665130	10SGD755115	
10SGD575175	10SGD665145	10SGD755130	
10SGD575190	10SGD665160	10SGD755145	
10SGD590115	10SGD665175	10SGD755160	
10SGD590130	10SGD680100	10SGD755175	
10SGD590145	10SGD680115	10SGE005075	
10SGD590160	10SGD680130	10SGE005090	
10SGD590175	10SGD680145	10SGE005105	



### PRODUCTION BLOCK 3

The 1,288 tiles delivered with production block 3 are listed below. Two (2) tiles highlighted in yellow do not have a corresponding LAS tile due to data voids:

10SDG950985	10SDH530855	10SDH590765	10SDH635750	10SDH695615	10SDH755615
10SDG965985	10SDH530870	10SDH590780	10SDH635765	10SDH695630	10SDH755630
10SDG980985	10SDH530885	10SDH590795	10SDH635780	10SDH695645	10SDH755645
10SDG995985	10SDH530900	10SDH590810	10SDH635795	10SDH695660	10SDH755660
10SDH425900	10SDH530915	10SDH590825	10SDH635810	10SDH695675	10SDH770555
10SDH425915	10SDH545795	10SDH590840	10SDH635825	10SDH695690	10SDH770570
10SDH440900	10SDH545810	10SDH590855	10SDH650645	10SDH695705	10SDH770585
10SDH440915	10SDH545825	10SDH590870	10SDH650660	10SDH695720	10SDH770600
10SDH455885	10SDH545840	10SDH590885	10SDH650675	10SDH695735	10SDH770615
10SDH455900	10SDH545855	10SDH590900	10SDH650690	10SDH710600	10SDH770630
10SDH455915	10SDH545870	10SDH605705	10SDH650705	10SDH710615	10SDH770645
10SDH470870	10SDH545885	10SDH605720	10SDH650720	10SDH710630	10SDH785540
10SDH470885	10SDH545900	10SDH605735	10SDH650735	10SDH710645	10SDH785555
10SDH470900	10SDH545915	10SDH605750	10SDH650750	10SDH710660	10SDH785570
10SDH470915	10SDH560780	10SDH605765	10SDH650765	10SDH710675	10SDH785585
10SDH485840	10SDH560795	10SDH605780	10SDH650780	10SDH710690	10SDH785600
10SDH485855	10SDH560810	10SDH605795	10SDH650795	10SDH710705	10SDH785615
10SDH485870	10SDH560825	10SDH605810	10SDH665630	10SDH725570	10SDH785630
10SDH485885	10SDH560840	10SDH605825	10SDH665645	10SDH725585	10SDH785645
10SDH485900	10SDH560855	10SDH605840	10SDH665660	10SDH725600	10SDH800525
10SDH485915	10SDH560870	10SDH605855	10SDH665675	10SDH725615	10SDH800540
10SDH500825	10SDH560885	10SDH605870	10SDH665690	10SDH725630	10SDH800555
10SDH500840	10SDH560900	10SDH620690	10SDH665705	10SDH725645	10SDH800570
10SDH500855	10SDH560915	10SDH620705	10SDH665720	10SDH725660	10SDH800585
10SDH500870	10SDH575750	10SDH620720	10SDH665735	10SDH725675	10SDH800600
10SDH500885	10SDH575765	10SDH620735	10SDH665750	10SDH725690	10SDH800615
10SDH500900	10SDH575780	10SDH620750	10SDH665765	10SDH740570	10SDH800630
10SDH500915	10SDH575795	10SDH620765	10SDH665780	10SDH740585	10SDH815510
10SDH515825	10SDH575810	10SDH620780	10SDH680615	10SDH740600	10SDH815525
10SDH515840	10SDH575825	10SDH620795	10SDH680630	10SDH740615	10SDH815540
10SDH515855	10SDH575840	10SDH620810	10SDH680645	10SDH740630	10SDH815555
10SDH515870	10SDH575855	10SDH620825	10SDH680660	10SDH740645	10SDH815570
10SDH515885	10SDH575870	10SDH620840	10SDH680675	10SDH740660	10SDH815585
10SDH515900	10SDH575885	10SDH635675	10SDH680690	10SDH740675	10SDH815600
10SDH515915	10SDH575900	10SDH635690	10SDH680705	10SDH755555	10SDH815615
10SDH530810	10SDH575915	10SDH635705	10SDH680720	10SDH755570	10SDH830495
10SDH530825	10SDH590735	10SDH635720	10SDH680735	10SDH755585	10SDH830510
10SDH530840	10SDH590750	10SDH635735	10SDH680750	10SDH755600	10SDH830525

Coastal California Data Merge

TO# 11

October 31, 2013

Page 43 of 57

10SDH830540	10SDH890360	10SDH920360	10SDH935555	10SDH965105	10SDH980195
10SDH830555	10SDH890375	10SDH920375	10SDH935570	10SDH965120	10SDH980210
10SDH830570	10SDH890390	10SDH920390	10SDH935585	10SDH965135	10SDH980225
10SDH830585	10SDH890405	10SDH920405	10SDH935600	10SDH965150	10SDH980240
10SDH830600	10SDH890420	10SDH920420	10SDH935615	10SDH965165	10SDH980255
10SDH845465	10SDH890435	10SDH920435	10SDH950000	10SDH965180	10SDH980270
10SDH845480	10SDH890450	10SDH920450	10SDH950015	10SDH965195	10SDH980285
10SDH845495	10SDH890465	10SDH920465	10SDH950030	10SDH965225	10SDH980300
10SDH845510	10SDH890480	10SDH920480	10SDH950045	10SDH965240	10SDH980315
10SDH845525	10SDH890495	10SDH920495	10SDH950060	10SDH965255	10SDH980330
10SDH845540	10SDH890510	10SDH920510	10SDH950075	10SDH965270	10SDH980345
10SDH845555	10SDH890525	10SDH920525	10SDH950090	10SDH965285	10SDH980360
10SDH845570	10SDH890540	10SDH920540	10SDH950105	10SDH965300	10SDH980375
10SDH845585	10SDH890555	10SDH920555	10SDH950120	10SDH965315	10SDH980390
10SDH845600	10SDH890570	10SDH920570	10SDH950135	10SDH965330	10SDH980405
10SDH860450	10SDH905330	10SDH920600	10SDH950150	10SDH965345	10SDH980420
10SDH860465	10SDH905345	10SDH920615	10SDH950270	10SDH965360	10SDH980435
10SDH860480	10SDH905360	10SDH935000	10SDH950285	10SDH965375	10SDH980450
10SDH860495	10SDH905375	10SDH935015	10SDH950300	10SDH965390	10SDH980540
10SDH860510	10SDH905390	10SDH935030	10SDH950315	10SDH965405	10SDH980555
10SDH860525	10SDH905405	10SDH935045	10SDH950330	10SDH965420	10SDH980570
10SDH860540	10SDH905420	10SDH935060	10SDH950345	10SDH965435	10SDH980585
10SDH860555	10SDH905435	10SDH935075	10SDH950360	10SDH965450	10SDH980600
10SDH860570	10SDH905450	10SDH935090	10SDH950375	10SDH965540	10SDH980615
10SDH860585	10SDH905465	10SDH935105	10SDH950390	10SDH965555	10SDH995000
10SDH875360	10SDH905480	10SDH935300	10SDH950405	10SDH965570	10SDH995015
10SDH875375	10SDH905495	10SDH935315	10SDH950420	10SDH965585	10SDH995030
10SDH875390	10SDH905510	10SDH935330	10SDH950435	10SDH965600	10SDH995045
10SDH875405	10SDH905525	10SDH935345	10SDH950450	10SDH980000	10SDH995060
10SDH875420	10SDH905540	10SDH935360	10SDH950540	10SDH980015	10SDH995075
10SDH875435	10SDH905555	10SDH935375	10SDH950555	10SDH980030	10SDH995090
10SDH875450	10SDH905570	10SDH935390	10SDH950570	10SDH980045	10SDH995105
10SDH875465	10SDH920015	10SDH935405	10SDH950585	10SDH980060	10SDH995120
10SDH875480	10SDH920030	10SDH935420	10SDH950600	10SDH980075	10SDH995135
10SDH875495	10SDH920045	10SDH935435	10SDH965000	10SDH980090	10SDH995150
10SDH875510	10SDH920060	10SDH935450	10SDH965015	10SDH980105	10SDH995165
10SDH875525	10SDH920075	10SDH935465	10SDH965030	10SDH980120	10SDH995180
10SDH875540	10SDH920090	10SDH935480	10SDH965045	10SDH980135	10SDH995195
10SDH875555	10SDH920315	10SDH935495	10SDH965060	10SDH980150	10SDH995210
10SDH875570	10SDH920330	10SDH935525	10SDH965075	10SDH980165	10SDH995225
10SDH890345	10SDH920345	10SDH935540	10SDH965090	10SDH980180	10SDH995240

Coastal California Data Merge

TO# 11

October 31, 2013

Page 44 of 57

10SDH995255	10SEG190895	10SEG265895	10SEG340865	10SEG370775	10SEG400445
10SDH995270	10SEG190910	10SEG265910	10SEG340880	10SEG370790	10SEG400460
10SDH995285	10SEG190925	10SEG265925	10SEG340895	10SEG370805	10SEG400475
10SDH995300	10SEG190940	10SEG265940	10SEG340910	10SEG370820	10SEG400490
10SDH995315	10SEG190955	10SEG265955	10SEG340925	10SEG370835	10SEG400505
10SDH995330	10SEG190970	10SEG265970	10SEG340940	10SEG370850	10SEG400520
10SDH995345	10SEG190985	10SEG265985	10SEG355505	10SEG370865	10SEG400535
10SDH995360	10SEG205895	10SEG280865	10SEG355520	10SEG370880	10SEG400550
10SDH995375	10SEG205910	10SEG280880	10SEG355535	10SEG370895	10SEG400565
10SDH995390	10SEG205925	10SEG280895	10SEG355550	10SEG370910	10SEG400580
10SDH995405	10SEG205940	10SEG280910	10SEG355565	10SEG385445	10SEG400595
10SDH995540	10SEG205955	10SEG280925	10SEG355580	10SEG385460	10SEG400610
10SDH995555	10SEG205970	10SEG280940	10SEG355595	10SEG385475	10SEG400625
10SDH995570	10SEG205985	10SEG280955	10SEG355610	10SEG385490	10SEG400640
10SDH995585	10SEG220880	10SEG280970	10SEG355625	10SEG385505	10SEG400655
10SDH995600	10SEG220895	10SEG280985	10SEG355805	10SEG385520	10SEG400670
10SDH995615	10SEG220910	10SEG295865	10SEG355820	10SEG385535	10SEG400685
10SDH995630	10SEG220925	10SEG295880	10SEG355835	10SEG385550	10SEG400700
10SEG010985	10SEG220940	10SEG295895	10SEG355850	10SEG385565	10SEG400715
10SEG025985	10SEG220955	10SEG295910	10SEG355865	10SEG385580	10SEG400730
10SEG040985	10SEG220970	10SEG295925	10SEG355880	10SEG385595	10SEG400745
10SEG055985	10SEG220985	10SEG295940	10SEG355895	10SEG385610	10SEG400760
10SEG115985	10SEG235880	10SEG295955	10SEG355910	10SEG385625	10SEG400775
10SEG130955	10SEG235895	10SEG295970	10SEG355925	10SEG385640	10SEG400790
10SEG130970	10SEG235910	10SEG310850	10SEG370475	10SEG385655	10SEG400805
10SEG130985	10SEG235925	10SEG310865	10SEG370490	10SEG385670	10SEG400820
10SEG145940	10SEG235940	10SEG310880	10SEG370505	10SEG385685	10SEG400835
10SEG145955	10SEG235955	10SEG310895	10SEG370520	10SEG385700	10SEG400850
10SEG145970	10SEG235970	10SEG310910	10SEG370535	10SEG385715	10SEG400865
10SEG145985	10SEG235985	10SEG310925	10SEG370550	10SEG385730	10SEG400880
10SEG160925	10SEG250865	10SEG310940	10SEG370565	10SEG385745	10SEG400895
10SEG160940	10SEG250880	10SEG310955	10SEG370580	10SEG385760	10SEG400910
10SEG160955	10SEG250895	10SEG325850	10SEG370595	10SEG385775	10SEG415430
10SEG160970	10SEG250910	10SEG325865	10SEG370610	10SEG385790	10SEG415445
10SEG160985	10SEG250925	10SEG325880	10SEG370625	10SEG385805	10SEG415460
10SEG175910	10SEG250940	10SEG325895	10SEG370640	10SEG385820	10SEG415475
10SEG175925	10SEG250955	10SEG325910	10SEG370655	10SEG385835	10SEG415490
10SEG175940	10SEG250970	10SEG325925	10SEG370715	10SEG385850	10SEG415505
10SEG175955	10SEG250985	10SEG325940	10SEG370730	10SEG385865	10SEG415520
10SEG175970	10SEG265865	10SEG340835	10SEG370745	10SEG385880	10SEG415535
10SEG175985	10SEG265880	10SEG340850	10SEG370760	10SEG385895	10SEG415550

Coastal California Data Merge

TO# 11

October 31, 2013

Page 45 of 57

10SEG415565	10SEG430640	10SEG445730	10SEG475205	10SEG490400	10SEG520175
10SEG415580	10SEG430655	10SEG445745	10SEG475220	10SEG490415	10SEG520190
10SEG415595	10SEG430670	10SEG445760	10SEG475235	10SEG490430	10SEG520205
10SEG415610	10SEG430685	10SEG445775	10SEG475250	10SEG490445	10SEG520220
10SEG415625	10SEG430700	10SEG445790	10SEG475265	10SEG490460	10SEG520235
10SEG415640	10SEG430715	10SEG445805	10SEG475280	10SEG490475	10SEG520250
10SEG415655	10SEG430730	10SEG460130	10SEG475295	10SEG490490	10SEG520265
10SEG415670	10SEG430745	10SEG460145	10SEG475310	10SEG505070	10SEG520280
10SEG415685	10SEG430760	10SEG460160	10SEG475325	10SEG505085	10SEG520295
10SEG415700	10SEG430775	10SEG460175	10SEG475340	10SEG505100	10SEG520310
10SEG415715	10SEG430790	10SEG460190	10SEG475355	10SEG505115	10SEG520325
10SEG415730	10SEG430805	10SEG460205	10SEG475370	10SEG505130	10SEG520340
10SEG415745	10SEG430820	10SEG460220	10SEG475385	10SEG505145	10SEG520355
10SEG415760	10SEG430835	10SEG460235	10SEG475400	10SEG505160	10SEG520370
10SEG415775	10SEG445190	10SEG460250	10SEG475415	10SEG505175	10SEG520385
10SEG415790	10SEG445205	10SEG460265	10SEG475430	10SEG505190	10SEG520400
10SEG415805	10SEG445220	10SEG460280	10SEG475445	10SEG505205	10SEG535070
10SEG415820	10SEG445235	10SEG460295	10SEG475460	10SEG505220	10SEG535085
10SEG415835	10SEG445355	10SEG460310	10SEG475475	10SEG505235	10SEG535100
10SEG415850	10SEG445370	10SEG460325	10SEG475490	10SEG505250	10SEG535115
10SEG415865	10SEG445385	10SEG460340	10SEG475505	10SEG505265	10SEG535130
10SEG415880	10SEG445400	10SEG460355	10SEG490100	10SEG505280	10SEG535145
10SEG415895	10SEG445415	10SEG460370	10SEG490115	10SEG505295	10SEG535160
10SEG415910	10SEG445430	10SEG460385	10SEG490130	10SEG505310	10SEG535175
10SEG430385	10SEG445445	10SEG460400	10SEG490145	10SEG505325	10SEG535190
10SEG430400	10SEG445460	10SEG460415	10SEG490160	10SEG505340	10SEG535205
10SEG430415	10SEG445475	10SEG460430	10SEG490175	10SEG505355	10SEG535220
10SEG430430	10SEG445490	10SEG460445	10SEG490190	10SEG505370	10SEG535235
10SEG430445	10SEG445505	10SEG460460	10SEG490205	10SEG505385	10SEG535250
10SEG430460	10SEG445520	10SEG460475	10SEG490220	10SEG505400	10SEG535265
10SEG430475	10SEG445535	10SEG460490	10SEG490235	10SEG505415	10SEG535280
10SEG430490	10SEG445550	10SEG460505	10SEG490250	10SEG505430	10SEG535295
10SEG430505	10SEG445595	10SEG460520	10SEG490265	10SEG505445	10SEG535310
10SEG430520	10SEG445610	10SEG460655	10SEG490280	10SEG505460	10SEG535325
10SEG430535	10SEG445625	10SEG460670	10SEG490295	10SEG520070	10SEG535340
10SEG430550	10SEG445640	10SEG475115	10SEG490310	10SEG520085	10SEG535355
10SEG430565	10SEG445655	10SEG475130	10SEG490325	10SEG520100	10SEG535370
10SEG430580	10SEG445670	10SEG475145	10SEG490340	10SEG520115	10SEG550070
10SEG430595	10SEG445685	10SEG475160	10SEG490355	10SEG520130	10SEG550085
10SEG430610	10SEG445700	10SEG475175	10SEG490370	10SEG520145	10SEG550100
10SEG430625	10SEG445715	10SEG475190	10SEG490385	10SEG520160	10SEG550115

Coastal California Data Merge

TO# 11

October 31, 2013

Page 46 of 57

10SEG550130	10SEH010165	10SEH025270	10SEH040420	10SEH070090	10SEH085330
10SEG550145	10SEH010180	10SEH025285	10SEH040600	10SEH070105	10SEH085345
10SEG550160	10SEH010195	10SEH025300	10SEH040615	10SEH070120	10SEH085360
10SEG550205	10SEH010210	10SEH025315	10SEH040630	10SEH070135	10SEH085390
10SEG550220	10SEH010225	10SEH025330	10SEH055000	10SEH070150	10SEH085405
10SEG550235	10SEH010240	10SEH025345	10SEH055015	10SEH070195	10SEH085420
10SEG565070	10SEH010255	10SEH025360	10SEH055030	10SEH070210	10SEH085585
10SEG565085	10SEH010270	10SEH025375	10SEH055045	10SEH070225	10SEH085600
10SEG565100	10SEH010285	10SEH025390	10SEH055060	10SEH070240	10SEH085615
10SEG565115	10SEH010300	10SEH025405	10SEH055075	10SEH070255	10SEH100000
10SEG565130	10SEH010315	10SEH025420	10SEH055090	10SEH070270	10SEH100015
10SEG565145	10SEH010330	10SEH025600	10SEH055105	10SEH070285	10SEH100030
10SEG565205	10SEH010345	10SEH025615	10SEH055120	10SEH070300	10SEH100045
10SEG565220	10SEH010360	10SEH025630	10SEH055135	10SEH070315	10SEH100060
10SEG580070	10SEH010375	10SEH040000	10SEH055150	10SEH070330	10SEH100075
10SEG580085	10SEH010390	10SEH040015	10SEH055180	10SEH070345	10SEH100090
10SEG580100	10SEH010405	10SEH040030	10SEH055195	10SEH070360	10SEH100105
10SEG580115	10SEH010420	10SEH040045	10SEH055210	10SEH070390	10SEH100120
10SEG580130	10SEH010570	10SEH040060	10SEH055225	10SEH070405	10SEH100150
10SEG595070	10SEH010585	10SEH040075	10SEH055240	10SEH070420	10SEH100165
10SEG595085	10SEH010600	10SEH040090	10SEH055255	10SEH070600	10SEH100180
10SEG595100	10SEH010615	10SEH040105	10SEH055270	10SEH070615	10SEH100195
10SEG610070	10SEH010630	10SEH040120	10SEH055285	10SEH085015	10SEH100210
10SEG610085	10SEH025000	10SEH040150	10SEH055300	10SEH085030	10SEH100225
10SEG610100	10SEH025015	10SEH040165	10SEH055315	10SEH085045	10SEH100240
10SEG625070	10SEH025030	10SEH040180	10SEH055330	10SEH085060	10SEH100255
10SEG625085	10SEH025045	10SEH040195	10SEH055345	10SEH085075	10SEH100270
10SEG640070	10SEH025060	10SEH040210	10SEH055360	10SEH085090	10SEH100285
10SEG640085	10SEH025075	10SEH040225	10SEH055375	10SEH085105	10SEH100300
10SEG655070	10SEH025090	10SEH040240	10SEH055390	10SEH085120	10SEH100315
10SEH010000	10SEH025105	10SEH040255	10SEH055405	10SEH085135	10SEH100330
10SEH010015	10SEH025120	10SEH040270	10SEH055420	10SEH085180	10SEH100345
10SEH010030	10SEH025135	10SEH040285	10SEH055600	10SEH085195	10SEH100360
10SEH010045	10SEH025150	10SEH040300	10SEH055615	10SEH085210	10SEH100390
10SEH010060	10SEH025165	10SEH040315	10SEH055630	10SEH085225	10SEH100405
10SEH010075	10SEH025180	10SEH040330	10SEH070000	10SEH085240	10SEH100585
10SEH010090	10SEH025195	10SEH040345	10SEH070015	10SEH085255	10SEH100600
10SEH010105	10SEH025210	10SEH040360	10SEH070030	10SEH085270	10SEH100615
10SEH010120	10SEH025225	10SEH040375	10SEH070045	10SEH085285	10SEH115000
10SEH010135	10SEH025240	10SEH040390	10SEH070060	10SEH085300	10SEH115015
10SEH010150	10SEH025255	10SEH040405	10SEH070075	10SEH085315	10SEH115030

10SEH115045	10SEH115285	10SEH130150	10SEH145135	10SEH160135	10SEH190000
10SEH115060	10SEH115330	10SEH130165	10SEH145150	10SEH160150	10SEH190015
10SEH115075	10SEH115345	10SEH130180	10SEH145165	10SEH160165	10SEH190030
10SEH115090	10SEH115360	10SEH130195	10SEH145180	10SEH160180	10SEH190090
10SEH115105	10SEH130000	10SEH130210	10SEH145195	10SEH175000	10SEH190105
10SEH115135	10SEH130015	10SEH145000	10SEH160000	10SEH175015	10SEH190120
10SEH115150	10SEH130030	10SEH145015	10SEH160015	10SEH175030	10SEH190135
10SEH115165	10SEH130045	10SEH145030	10SEH160030	10SEH175045	10SEH190150
10SEH115180	10SEH130060	10SEH145045	10SEH160045	10SEH175090	10SEH205000
10SEH115195	10SEH130075	10SEH145060	10SEH160060	10SEH175105	10SEH205015
10SEH115210	10SEH130105	10SEH145075	10SEH160090	10SEH175120	10SEH220000
10SEH115225	10SEH130120	10SEH145105	10SEH160105	10SEH175135	
10SEH115240	10SEH130135	10SEH145120	10SEH160120	10SEH175150	



## PRODUCTION BLOCK 4

The 2,268 tiles delivered with production block 4 are listed below. Two (2) tiles highlighted in yellow do not have a corresponding LAS tile due to data voids:

10SDH350990	10SDH485975	10SDJ245470	10SDJ260560	10SDJ275485	10SDJ290140
10SDH365990	10SDH500930	10SDJ245485	10SDJ260575	10SDJ275500	10SDJ290305
10SDH380960	10SDH500945	10SDJ245500	10SDJ260590	10SDJ275515	10SDJ290320
10SDH380975	10SDH500960	10SDJ245515	10SDJ260605	10SDJ275530	10SDJ290335
10SDH380990	10SDH515930	10SDJ245530	10SDJ260620	10SDJ275545	10SDJ290350
10SDH395930	10SDH515945	10SDJ245545	10SDJ260635	10SDJ275560	10SDJ290365
10SDH395945	10SDH530930	10SDJ245560	10SDJ260650	10SDJ275575	10SDJ290380
10SDH395960	10SDH545930	10SDJ245575	10SDJ260665	10SDJ275590	10SDJ290395
10SDH395975	10SDH545945	10SDJ245590	10SDJ260680	10SDJ275605	10SDJ290410
10SDH395990	10SDH560930	10SDJ245605	10SDJ260695	10SDJ275620	10SDJ290425
10SDH410930	10SDH560945	10SDJ245620	10SDJ260710	10SDJ275635	10SDJ290440
10SDH410945	10SDJ215545	10SDJ245635	10SDJ260725	10SDJ275650	10SDJ290455
10SDH410960	10SDJ215560	10SDJ245650	10SDJ260740	10SDJ275665	10SDJ290470
10SDH410975	10SDJ215965	10SDJ245665	10SDJ260755	10SDJ275680	10SDJ290485
10SDH410990	10SDJ215980	10SDJ245680	10SDJ260785	10SDJ275695	10SDJ290500
10SDH425930	10SDJ215995	10SDJ245695	10SDJ260800	10SDJ275710	10SDJ290515
10SDH425945	10SDJ230485	10SDJ245710	10SDJ260815	10SDJ275725	10SDJ290530
10SDH425960	10SDJ230500	10SDJ245725	10SDJ260830	10SDJ275740	10SDJ290545
10SDH425975	10SDJ230515	10SDJ245740	10SDJ260845	10SDJ275755	10SDJ290560
10SDH425990	10SDJ230530	10SDJ245905	10SDJ260860	10SDJ275770	10SDJ290575
10SDH440930	10SDJ230545	10SDJ245920	10SDJ260875	10SDJ275785	10SDJ290590
10SDH440945	10SDJ230560	10SDJ245935	10SDJ260890	10SDJ275800	10SDJ290605
10SDH440960	10SDJ230575	10SDJ245950	10SDJ260905	10SDJ275815	10SDJ290620
10SDH440975	10SDJ230590	10SDJ245965	10SDJ260920	10SDJ275830	10SDJ290635
10SDH440990	10SDJ230605	10SDJ245980	10SDJ260935	10SDJ275845	10SDJ290650
10SDH455930	10SDJ230620	10SDJ245995	10SDJ260950	10SDJ275860	10SDJ290665
10SDH455945	10SDJ230635	10SDJ260380	10SDJ260965	10SDJ275875	10SDJ290680
10SDH455960	10SDJ230650	10SDJ260395	10SDJ260980	10SDJ275890	10SDJ290695
10SDH455975	10SDJ230665	10SDJ260410	10SDJ260995	10SDJ275905	10SDJ290710
10SDH455990	10SDJ230680	10SDJ260425	10SDJ275350	10SDJ275920	10SDJ290725
10SDH470930	10SDJ230920	10SDJ260440	10SDJ275365	10SDJ275935	10SDJ290740
10SDH470945	10SDJ230935	10SDJ260455	10SDJ275380	10SDJ275950	10SDJ290755
10SDH470960	10SDJ230950	10SDJ260470	10SDJ275395	10SDJ275965	10SDJ290770
10SDH470975	10SDJ230965	10SDJ260485	10SDJ275410	10SDJ275980	10SDJ290785
10SDH470990	10SDJ230980	10SDJ260500	10SDJ275425	10SDJ275995	10SDJ290800
10SDH485930	10SDJ230995	10SDJ260515	10SDJ275440	10SDJ290095	10SDJ290815
10SDH485945	10SDJ245440	10SDJ260530	10SDJ275455	10SDJ290110	10SDJ290830
10SDH485960	10SDJ245455	10SDJ260545	10SDJ275470	10SDJ290125	10SDJ290845

Coastal California Data Merge

TO# 11

October 31, 2013

Page 49 of 57

10SDJ290860	10SDJ305620	10SDJ320305	10SDJ320935	10SDJ335665	10SDJ350365
10SDJ290875	10SDJ305635	10SDJ320320	10SDJ320950	10SDJ335680	10SDJ350380
10SDJ290890	10SDJ305650	10SDJ320335	10SDJ335020	10SDJ335710	10SDJ350395
10SDJ290905	10SDJ305665	10SDJ320350	10SDJ335035	10SDJ335725	10SDJ350410
10SDJ290920	10SDJ305680	10SDJ320365	10SDJ335050	10SDJ335740	10SDJ350425
10SDJ290935	10SDJ305695	10SDJ320380	10SDJ335065	10SDJ335755	10SDJ350440
10SDJ290950	10SDJ305710	10SDJ320395	10SDJ335080	10SDJ335770	10SDJ350485
10SDJ290965	10SDJ305725	10SDJ320410	10SDJ335095	10SDJ335785	10SDJ350500
10SDJ290980	10SDJ305740	10SDJ320425	10SDJ335110	10SDJ335800	10SDJ350515
10SDJ290995	10SDJ305755	10SDJ320440	10SDJ335125	10SDJ335815	10SDJ350530
10SDJ305050	10SDJ305770	10SDJ320455	10SDJ335140	10SDJ335830	10SDJ350545
10SDJ305065	10SDJ305785	10SDJ320470	10SDJ335155	10SDJ335845	10SDJ350620
10SDJ305080	10SDJ305800	10SDJ320485	10SDJ335170	10SDJ335860	10SDJ350635
10SDJ305095	10SDJ305815	10SDJ320500	10SDJ335185	10SDJ335875	10SDJ350650
10SDJ305110	10SDJ305830	10SDJ320515	10SDJ335200	10SDJ335890	10SDJ350665
10SDJ305125	10SDJ305845	10SDJ320530	10SDJ335215	10SDJ335905	10SDJ350680
10SDJ305140	10SDJ305860	10SDJ320545	10SDJ335230	10SDJ335920	10SDJ350740
10SDJ305155	10SDJ305875	10SDJ320560	10SDJ335245	10SDJ350005	10SDJ350755
10SDJ305275	10SDJ305890	10SDJ320590	10SDJ335260	10SDJ350020	10SDJ350770
10SDJ305290	10SDJ305905	10SDJ320605	10SDJ335275	10SDJ350035	10SDJ350785
10SDJ305305	10SDJ305920	10SDJ320620	10SDJ335290	10SDJ350050	10SDJ350800
10SDJ305320	10SDJ305935	10SDJ320635	10SDJ335305	10SDJ350065	10SDJ350815
10SDJ305335	10SDJ305950	10SDJ320650	10SDJ335320	10SDJ350080	10SDJ365005
10SDJ305350	10SDJ305965	10SDJ320665	10SDJ335335	10SDJ350095	10SDJ365020
10SDJ305365	10SDJ305980	10SDJ320680	10SDJ335350	10SDJ350110	10SDJ365035
10SDJ305380	10SDJ305995	10SDJ320695	10SDJ335365	10SDJ350125	10SDJ365050
10SDJ305395	10SDJ320035	10SDJ320710	10SDJ335380	10SDJ350140	10SDJ365065
10SDJ305410	10SDJ320050	10SDJ320725	10SDJ335395	10SDJ350155	10SDJ365080
10SDJ305425	10SDJ320065	10SDJ320740	10SDJ335410	10SDJ350170	10SDJ365095
10SDJ305440	10SDJ320080	10SDJ320755	10SDJ335425	10SDJ350185	10SDJ365110
10SDJ305455	10SDJ320095	10SDJ320770	10SDJ335440	10SDJ350200	10SDJ365125
10SDJ305470	10SDJ320110	10SDJ320785	10SDJ335455	10SDJ350215	10SDJ365140
10SDJ305485	10SDJ320125	10SDJ320800	10SDJ335470	10SDJ350230	10SDJ365155
10SDJ305500	10SDJ320140	10SDJ320815	10SDJ335485	10SDJ350245	10SDJ365170
10SDJ305515	10SDJ320155	10SDJ320830	10SDJ335500	10SDJ350260	10SDJ365185
10SDJ305530	10SDJ320170	10SDJ320845	10SDJ335515	10SDJ350275	10SDJ365200
10SDJ305545	10SDJ320230	10SDJ320860	10SDJ335530	10SDJ350290	10SDJ365215
10SDJ305560	10SDJ320245	10SDJ320875	10SDJ335545	10SDJ350305	10SDJ365230
10SDJ305575	10SDJ320260	10SDJ320890	10SDJ335560	10SDJ350320	10SDJ365245
10SDJ305590	10SDJ320275	10SDJ320905	10SDJ335635	10SDJ350335	10SDJ365260
10SDJ305605	10SDJ320290	10SDJ320920	10SDJ335650	10SDJ350350	10SDJ365275

10SDJ365290	10SDJ380215	10SDJ395170	10SDJ410515	10SDK065280	10SDK155115
10SDJ365305	10SDJ380230	10SDJ395185	10SDJ410530	10SDK080220	10SDK155130
10SDJ365320	10SDJ380245	10SDJ395200	10SDJ425005	10SDK080235	10SDK155145
10SDJ365335	10SDJ380260	10SDJ395215	10SDJ425020	10SDK080250	10SDK155160
10SDJ365350	10SDJ380275	10SDJ395230	10SDJ425035	10SDK080265	10SDK155175
10SDJ365365	10SDJ380290	10SDJ395245	10SDJ425095	10SDK080280	10SDK155190
10SDJ365380	10SDJ380305	10SDJ395260	10SDJ425110	10SDK095205	10SDK155205
10SDJ365395	10SDJ380320	10SDJ395275	10SDJ425320	10SDK095220	10SDK155220
10SDJ365410	10SDJ380335	10SDJ395290	10SDJ425335	10SDK095235	10SDK155235
10SDJ365425	10SDJ380350	10SDJ395305	10SDJ425350	10SDK095250	10SDK155250
10SDJ365440	10SDJ380365	10SDJ395350	10SDJ425365	10SDK095265	10SDK170085
10SDJ365455	10SDJ380380	10SDJ395365	10SDJ425470	10SDK095280	10SDK170100
10SDJ365470	10SDJ380425	10SDJ395380	10SDJ425485	10SDK110175	10SDK170115
10SDJ365485	10SDJ380440	10SDJ395440	10SDJ425500	10SDK110190	10SDK170130
10SDJ365500	10SDJ380455	10SDJ395455	10SDJ425515	10SDK110205	10SDK170145
10SDJ365515	10SDJ380470	10SDJ395470	10SDJ440005	10SDK110220	10SDK170160
10SDJ365530	10SDJ380485	10SDJ395485	10SDJ440020	10SDK110235	10SDK170175
10SDJ365605	10SDJ380500	10SDJ395500	10SDJ440095	10SDK110250	10SDK170190
10SDJ365620	10SDJ380515	10SDJ395515	10SDJ440110	10SDK110265	10SDK170205
10SDJ365635	10SDJ380530	10SDJ395530	10SDJ440320	10SDK110280	10SDK170220
10SDJ365650	10SDJ380605	10SDJ410005	10SDJ440335	10SDK125160	10SDK170235
10SDJ365725	10SDJ380620	10SDJ410020	10SDJ440350	10SDK125175	10SDK185070
10SDJ365740	10SDJ380635	10SDJ410035	10SDJ440500	10SDK125190	10SDK185085
10SDJ365755	10SDJ380650	10SDJ410050	10SDJ440515	10SDK125205	10SDK185100
10SDJ365770	10SDJ380725	10SDJ410095	10SDJ455005	10SDK125220	10SDK185115
10SDJ365785	10SDJ380740	10SDJ410110	10SDJ455320	10SDK125235	10SDK185130
10SDJ365800	10SDJ380755	10SDJ410155	10SDJ455335	10SDK125250	10SDK185145
10SDJ380005	10SDJ380770	10SDJ410170	10SDJ455350	10SDK125265	10SDK185160
10SDJ380020	10SDJ380785	10SDJ410185	10SDJ455500	10SDK125280	10SDK185175
10SDJ380035	10SDJ380800	10SDJ410200	10SDJ455515	10SDK140130	10SDK185190
10SDJ380050	10SDJ395005	10SDJ410215	10SDK020265	10SDK140145	10SDK185205
10SDJ380065	10SDJ395020	10SDJ410230	10SDK020280	10SDK140160	10SDK185220
10SDJ380080	10SDJ395035	10SDJ410245	10SDK035250	10SDK140175	10SDK200055
10SDJ380095	10SDJ395050	10SDJ410335	10SDK035265	10SDK140190	10SDK200070
10SDJ380110	10SDJ395065	10SDJ410350	10SDK035280	10SDK140205	10SDK200085
10SDJ380125	10SDJ395080	10SDJ410365	10SDK050250	10SDK140220	10SDK200100
10SDJ380140	10SDJ395095	10SDJ410440	10SDK050265	10SDK140235	10SDK200115
10SDJ380155	10SDJ395110	10SDJ410455	10SDK050280	10SDK140250	10SDK200130
10SDJ380170	10SDJ395125	10SDJ410470	10SDK065235	10SDK140265	10SDK200145
10SDJ380185	10SDJ395140	10SDJ410485	10SDK065250	10SDK140280	10SDK200160
10SDJ380200	10SDJ395155	10SDJ410500	10SDK065265	10SDK155100	10SDK200175

Coastal California Data Merge

TO# 11

October 31, 2013

Page 51 of 57

10SDK200190	10SDK275025	10TCK735835	10TCK780685	10TCK795880	10TCK825520
10SDK215010	10SDK275040	10TCK750700	10TCK780700	10TCK795895	10TCK825535
10SDK215025	10SDK275055	10TCK750715	10TCK780715	10TCK795910	10TCK825550
10SDK215040	10SDK275070	10TCK750730	10TCK780730	10TCK795925	10TCK825565
10SDK215055	10SDK275085	10TCK750745	10TCK780745	10TCK795940	10TCK825580
10SDK215070	10SDK275100	10TCK750760	10TCK780760	10TCK795955	10TCK825595
10SDK215085	10SDK290010	10TCK750775	10TCK780775	10TCK810505	10TCK825610
10SDK215100	10SDK290025	10TCK750790	10TCK780790	10TCK810520	10TCK825625
10SDK215115	10SDK290040	10TCK750805	10TCK780805	10TCK810535	10TCK825640
10SDK215130	10SDK290055	10TCK750820	10TCK780820	10TCK810550	10TCK825655
10SDK215145	10SDK290070	10TCK750835	10TCK780835	10TCK810565	10TCK825670
10SDK215160	10SDK290100	10TCK750850	10TCK780850	10TCK810580	10TCK825685
10SDK215175	10SDK305010	10TCK750865	10TCK780865	10TCK810595	10TCK825700
10SDK230010	10TCK690745	10TCK750880	10TCK780880	10TCK810610	10TCK825715
10SDK230025	10TCK690760	10TCK765670	10TCK780895	10TCK810625	10TCK825730
10SDK230040	10TCK690775	10TCK765685	10TCK780910	10TCK810640	10TCK825745
10SDK230055	10TCK690790	10TCK765700	10TCK795505	10TCK810655	10TCK825760
10SDK230070	10TCK690805	10TCK765715	10TCK795520	10TCK810670	10TCK825790
10SDK230085	10TCK705730	10TCK765730	10TCK795535	10TCK810685	10TCK825805
10SDK230100	10TCK705745	10TCK765745	10TCK795550	10TCK810700	10TCK825820
10SDK230115	10TCK705760	10TCK765760	10TCK795565	10TCK810715	10TCK825835
10SDK230130	10TCK705775	10TCK765775	10TCK795580	10TCK810730	10TCK825850
10SDK230160	10TCK705790	10TCK765790	10TCK795595	10TCK810745	10TCK825865
10SDK230175	10TCK705805	10TCK765805	10TCK795610	10TCK810760	10TCK825880
10SDK245010	10TCK705820	10TCK765820	10TCK795625	10TCK810775	10TCK825895
10SDK245025	10TCK720730	10TCK765835	10TCK795640	10TCK810790	10TCK825910
10SDK245040	10TCK720745	10TCK765850	10TCK795655	10TCK810805	10TCK825925
10SDK245055	10TCK720760	10TCK765865	10TCK795670	10TCK810820	10TCK825940
10SDK245070	10TCK720775	10TCK765880	10TCK795685	10TCK810835	10TCK825955
10SDK245085	10TCK720790	10TCK765895	10TCK795700	10TCK810850	10TCK825970
10SDK245100	10TCK720805	10TCK780520	10TCK795715	10TCK810865	10TCK825985
10SDK245115	10TCK720820	10TCK780535	10TCK795730	10TCK810880	10TCK840460
10SDK260010	10TCK720835	10TCK780550	10TCK795745	10TCK810895	10TCK840475
10SDK260025	10TCK735715	10TCK780565	10TCK795760	10TCK810910	10TCK840490
10SDK260040	10TCK735730	10TCK780580	10TCK795775	10TCK810925	10TCK840505
10SDK260055	10TCK735745	10TCK780595	10TCK795790	10TCK810940	10TCK840520
10SDK260070	10TCK735760	10TCK780610	10TCK795805	10TCK810955	10TCK840535
10SDK260085	10TCK735775	10TCK780625	10TCK795820	10TCK810970	10TCK840550
10SDK260100	10TCK735790	10TCK780640	10TCK795835	10TCK810985	10TCK840565
10SDK260115	10TCK735805	10TCK780655	10TCK795850	10TCK825490	10TCK840580
10SDK275010	10TCK735820	10TCK780670	10TCK795865	10TCK825505	10TCK840595

Coastal California Data Merge

TO# 11

October 31, 2013

Page 52 of 57

10TCK840610	10TCK855925	10TCK900490	10TCK945385	10TCK975955	10TCL885075
10TCK840625	10TCK855940	10TCK900505	10TCK945400	10TCK975970	10TCL885090
10TCK840640	10TCK855955	10TCK900520	10TCK945415	10TCK975985	10TCL885105
10TCK840655	10TCK855970	10TCK900535	10TCK945430	10TCK990355	10TCL885120
10TCK840670	10TCK855985	10TCK900910	10TCK945445	10TCK990370	10TCL885135
10TCK840685	10TCK870445	10TCK900925	10TCK945460	10TCK990385	10TCL900000
10TCK840700	10TCK870460	10TCK900940	10TCK945475	10TCK990400	10TCL900015
10TCK840715	10TCK870475	10TCK900955	10TCK945490	10TCK990415	10TCL900030
10TCK840730	10TCK870490	10TCK900970	10TCK945910	10TCK990430	10TCL900045
10TCK840790	10TCK870505	10TCK900985	10TCK945925	10TCK990895	10TCL900060
10TCK840805	10TCK870520	10TCK915400	10TCK945940	10TCK990910	10TCL900075
10TCK840835	10TCK870535	10TCK915415	10TCK945955	10TCK990925	10TCL900090
10TCK840850	10TCK870550	10TCK915430	10TCK945970	10TCK990940	10TCL900105
10TCK840865	10TCK870595	10TCK915445	10TCK945985	10TCK990955	10TCL900120
10TCK840880	10TCK870610	10TCK915460	10TCK960370	10TCK990970	10TCL900135
10TCK840895	10TCK870625	10TCK915475	10TCK960385	10TCK990985	10TCL900150
10TCK840910	10TCK870910	10TCK915490	10TCK960400	10TCL825000	10TCL900165
10TCK840925	10TCK870925	10TCK915505	10TCK960415	10TCL825015	10TCL915000
10TCK840940	10TCK870940	10TCK915520	10TCK960430	10TCL840000	10TCL915015
10TCK840955	10TCK870955	10TCK915910	10TCK960445	10TCL840015	10TCL915030
10TCK840970	10TCK870970	10TCK915925	10TCK960460	10TCL840030	10TCL915045
10TCK840985	10TCK870985	10TCK915940	10TCK960475	10TCL840045	10TCL915060
10TCK855460	10TCK885430	10TCK915955	10TCK960895	10TCL855000	10TCL915075
10TCK855475	10TCK885445	10TCK915970	10TCK960910	10TCL855015	10TCL915090
10TCK855490	10TCK885460	10TCK915985	10TCK960925	10TCL855030	10TCL915105
10TCK855505	10TCK885475	10TCK930385	10TCK960940	10TCL855045	10TCL915120
10TCK855520	10TCK885490	10TCK930400	10TCK960955	10TCL855060	10TCL915135
10TCK855535	10TCK885505	10TCK930415	10TCK960970	10TCL855075	10TCL915150
10TCK855550	10TCK885520	10TCK930430	10TCK960985	10TCL870000	10TCL915165
10TCK855565	10TCK885535	10TCK930445	10TCK975355	10TCL870015	10TCL915180
10TCK855580	10TCK885910	10TCK930460	10TCK975370	10TCL870030	10TCL930000
10TCK855595	10TCK885925	10TCK930475	10TCK975385	10TCL870045	10TCL930015
10TCK855610	10TCK885940	10TCK930490	10TCK975400	10TCL870060	10TCL930030
10TCK855625	10TCK885955	10TCK930505	10TCK975415	10TCL870075	10TCL930045
10TCK855640	10TCK885970	10TCK930910	10TCK975430	10TCL870090	10TCL930060
10TCK855655	10TCK885985	10TCK930925	10TCK975445	10TCL870105	10TCL930075
10TCK855670	10TCK900415	10TCK930940	10TCK975460	10TCL885000	10TCL930090
10TCK855685	10TCK900430	10TCK930955	10TCK975895	10TCL885015	10TCL930105
10TCK855880	10TCK900445	10TCK930970	10TCK975910	10TCL885030	10TCL930120
10TCK855895	10TCK900460	10TCK930985	10TCK975925	10TCL885045	10TCL930135
10TCK855910	10TCK900475	10TCK945370	10TCK975940	10TCL885060	10TCL930150

Coastal California Data Merge

TO# 11

October 31, 2013

Page 53 of 57

10TCL930165	10TCL960135	10TCL975165	10TCL990135	10TCL990825	10TCM855350
10TCL930180	10TCL960150	10TCL975180	10TCL990150	10TCM795290	10TCM855365
10TCL930195	10TCL960165	10TCL975195	10TCL990165	10TCM795305	10TCM855380
10TCL930210	10TCL960180	10TCL975210	10TCL990180	10TCM795320	10TCM870215
10TCL945000	10TCL960195	10TCL975225	10TCL990195	10TCM795335	10TCM870230
10TCL945015	10TCL960210	10TCL975240	10TCL990210	10TCM795350	10TCM870245
10TCL945030	10TCL960225	10TCL975255	10TCL990225	10TCM810275	10TCM870260
10TCL945045	10TCL960240	10TCL975270	10TCL990240	10TCM810290	10TCM870275
10TCL945060	10TCL960255	10TCL975285	10TCL990255	10TCM810305	10TCM870290
10TCL945075	10TCL960270	10TCL975300	10TCL990270	10TCM810320	10TCM870305
10TCL945090	10TCL960285	10TCL975315	10TCL990285	10TCM810335	10TCM870320
10TCL945105	10TCL960420	10TCL975330	10TCL990300	10TCM810350	10TCM870335
10TCL945120	10TCL960435	10TCL975405	10TCL990315	10TCM810365	10TCM870350
10TCL945135	10TCL960450	10TCL975420	10TCL990330	10TCM825245	10TCM870365
10TCL945150	10TCL960465	10TCL975435	10TCL990345	10TCM825260	10TCM870380
10TCL945165	10TCL960480	10TCL975450	10TCL990360	10TCM825275	10TCM885200
10TCL945180	10TCL960495	10TCL975465	10TCL990375	10TCM825290	10TCM885215
10TCL945195	10TCL960510	10TCL975480	10TCL990390	10TCM825305	10TCM885230
10TCL945210	10TCL960525	10TCL975495	10TCL990405	10TCM825320	10TCM885245
10TCL945225	10TCL960540	10TCL975510	10TCL990420	10TCM825335	10TCM885260
10TCL945240	10TCL960555	10TCL975525	10TCL990435	10TCM825350	10TCM885275
10TCL945465	10TCL960570	10TCL975540	10TCL990450	10TCM825365	10TCM885290
10TCL945480	10TCL960585	10TCL975555	10TCL990465	10TCM840230	10TCM885305
10TCL945495	10TCL960720	10TCL975570	10TCL990480	10TCM840245	10TCM885320
10TCL945510	10TCL960735	10TCL975585	10TCL990495	10TCM840260	10TCM885335
10TCL945525	10TCL960750	10TCL975720	10TCL990510	10TCM840275	10TCM885350
10TCL945540	10TCL960765	10TCL975735	10TCL990525	10TCM840290	10TCM885365
10TCL945555	10TCL960780	10TCL975750	10TCL990540	10TCM840305	10TCM885500
10TCL945570	10TCL960795	10TCL975765	10TCL990555	10TCM840320	10TCM900200
10TCL945750	10TCL960810	10TCL975780	10TCL990570	10TCM840335	10TCM900215
10TCL945765	10TCL975000	10TCL975795	10TCL990585	10TCM840350	10TCM900230
10TCL945780	10TCL975015	10TCL975810	10TCL990600	10TCM840365	10TCM900245
10TCL960000	10TCL975030	10TCL990000	10TCL990615	10TCM840380	10TCM900260
10TCL960015	10TCL975045	10TCL990015	10TCL990705	10TCM855230	10TCM900275
10TCL960030	10TCL975060	10TCL990030	10TCL990720	10TCM855245	10TCM900290
10TCL960045	10TCL975075	10TCL990045	10TCL990735	10TCM855260	10TCM900305
10TCL960060	10TCL975090	10TCL990060	10TCL990750	10TCM855275	10TCM900320
10TCL960075	10TCL975105	10TCL990075	10TCL990765	10TCM855290	10TCM900335
10TCL960090	10TCL975120	10TCL990090	10TCL990780	10TCM855305	10TCM900350
10TCL960105	10TCL975135	10TCL990105	10TCL990795	10TCM855320	10TCM900485
10TCL960120	10TCL975150	10TCL990120	10TCL990810	10TCM855335	10TCM900500



Coastal California Data Merge

TO# 11

October 31, 2013

Page 54 of 57

10TCM915185	10TCM945200	10TCM960455	10TCM990230	10TDK020385	10TDK080295
10TCM915200	10TCM945215	10TCM960470	10TCM990245	10TDK020400	10TDK080310
10TCM915215	10TCM945230	10TCM960485	10TCM990260	10TDK020415	10TDK080325
10TCM915230	10TCM945245	10TCM960500	10TCM990275	10TDK020835	10TDK080340
10TCM915245	10TCM945260	10TCM975110	10TCM990290	10TDK020850	10TDK080355
10TCM915260	10TCM945275	10TCM975140	10TCM990305	10TDK020865	10TDK080370
10TCM915275	10TCM945290	10TCM975155	10TCM990320	10TDK020880	10TDK095295
10TCM915290	10TCM945305	10TCM975170	10TCM990335	10TDK020895	10TDK095310
10TCM915305	10TCM945320	10TCM975185	10TCM990350	10TDK020910	10TDK095325
10TCM915320	10TCM945335	10TCM975200	10TCM990365	10TDK020925	10TDK110295
10TCM915335	10TCM945350	10TCM975215	10TCM990380	10TDK020940	10TDK110310
10TCM915350	10TCM945365	10TCM975230	10TCM990395	10TDK035295	10TDK125295
10TCM915470	10TCM945380	10TCM975245	10TCM990410	10TDK035310	10TDL005000
10TCM915485	10TCM945395	10TCM975260	10TCM990425	10TDK035325	10TDL005015
10TCM915500	10TCM945410	10TCM975275	10TCM990440	10TDK035340	10TDL005030
10TCM930170	10TCM945425	10TCM975290	10TCM990455	10TDK035355	10TDL005045
10TCM930185	10TCM945440	10TCM975305	10TCM990470	10TDK035370	10TDL005060
10TCM930200	10TCM945455	10TCM975320	10TCM990485	10TDK035385	10TDL005075
10TCM930215	10TCM945470	10TCM975335	10TCM990500	10TDK035400	10TDL005090
10TCM930230	10TCM945485	10TCM975350	10TDK005340	10TDK035415	10TDL005105
10TCM930245	10TCM945500	10TCM975365	10TDK005355	10TDK035835	10TDL005120
10TCM930260	10TCM960155	10TCM975380	10TDK005370	10TDK035850	10TDL005135
10TCM930275	10TCM960170	10TCM975395	10TDK005385	10TDK050295	10TDL005150
10TCM930290	10TCM960185	10TCM975410	10TDK005400	10TDK050310	10TDL005165
10TCM930305	10TCM960200	10TCM975425	10TDK005415	10TDK050325	10TDL005180
10TCM930320	10TCM960215	10TCM975440	10TDK005430	10TDK050340	10TDL005195
10TCM930335	10TCM960230	10TCM975455	10TDK005835	10TDK050355	10TDL005210
10TCM930350	10TCM960245	10TCM975470	10TDK005850	10TDK050370	10TDL005225
10TCM930365	10TCM960260	10TCM975485	10TDK005865	10TDK050385	10TDL005240
10TCM930380	10TCM960275	10TCM975500	10TDK005880	10TDK050400	10TDL005255
10TCM930395	10TCM960290	10TCM990065	10TDK005895	10TDK050415	10TDL005270
10TCM930410	10TCM960305	10TCM990080	10TDK005910	10TDK050835	10TDL005285
10TCM930425	10TCM960320	10TCM990095	10TDK005925	10TDK050850	10TDL005300
10TCM930440	10TCM960335	10TCM990110	10TDK005940	10TDK065295	10TDL005315
10TCM930455	10TCM960350	10TCM990125	10TDK005955	10TDK065310	10TDL005330
10TCM930470	10TCM960365	10TCM990140	10TDK020295	10TDK065325	10TDL005345
10TCM930485	10TCM960380	10TCM990155	10TDK020310	10TDK065340	10TDL005360
10TCM930500	10TCM960395	10TCM990170	10TDK020325	10TDK065355	10TDL005375
10TCM945155	10TCM960410	10TCM990185	10TDK020340	10TDK065370	10TDL005390
10TCM945170	10TCM960425	10TCM990200	10TDK020355	10TDK065385	10TDL005405
10TCM945185	10TCM960440	10TCM990215	10TDK020370	10TDK065400	10TDL005420

10TDL005435	10TDL020225	10TDL020960	10TDL035630	10TDL050405	10TDL065195
10TDL005450	10TDL020240	10TDL020975	10TDL035645	10TDL050420	10TDL065210
10TDL005465	10TDL020255	10TDL020990	10TDL035660	10TDL050435	10TDL065225
10TDL005480	10TDL020270	10TDL035060	10TDL035675	10TDL050450	10TDL065240
10TDL005495	10TDL020285	10TDL035075	10TDL035690	10TDL050465	10TDL065255
10TDL005510	10TDL020300	10TDL035090	10TDL035705	10TDL050540	10TDL065270
10TDL005525	10TDL020315	10TDL035105	10TDL035720	10TDL050555	10TDL065285
10TDL005540	10TDL020330	10TDL035120	10TDL035735	10TDL050570	10TDL065300
10TDL005555	10TDL020345	10TDL035135	10TDL035750	10TDL050585	10TDL065315
10TDL005570	10TDL020360	10TDL035150	10TDL035765	10TDL050600	10TDL065345
10TDL005585	10TDL020375	10TDL035165	10TDL035780	10TDL050615	10TDL065360
10TDL005600	10TDL020390	10TDL035180	10TDL035795	10TDL050630	10TDL065375
10TDL005615	10TDL020405	10TDL035195	10TDL035810	10TDL050645	10TDL065390
10TDL005630	10TDL020420	10TDL035210	10TDL035900	10TDL050660	10TDL065405
10TDL005645	10TDL020435	10TDL035225	10TDL035915	10TDL050675	10TDL065420
10TDL005660	10TDL020450	10TDL035240	10TDL035930	10TDL050690	10TDL065435
10TDL005675	10TDL020465	10TDL035255	10TDL035945	10TDL050705	10TDL065450
10TDL005690	10TDL020480	10TDL035270	10TDL035960	10TDL050720	10TDL065540
10TDL005705	10TDL020495	10TDL035285	10TDL035975	10TDL050735	10TDL065555
10TDL005720	10TDL020510	10TDL035300	10TDL035990	10TDL050750	10TDL065570
10TDL005735	10TDL020525	10TDL035315	10TDL050090	10TDL050765	10TDL065585
10TDL005750	10TDL020540	10TDL035330	10TDL050105	10TDL050780	10TDL065600
10TDL005765	10TDL020555	10TDL035345	10TDL050120	10TDL050795	10TDL065615
10TDL005780	10TDL020570	10TDL035360	10TDL050135	10TDL050810	10TDL065630
10TDL005795	10TDL020585	10TDL035375	10TDL050150	10TDL050825	10TDL065645
10TDL005810	10TDL020600	10TDL035390	10TDL050165	10TDL050840	10TDL065660
10TDL005825	10TDL020615	10TDL035405	10TDL050180	10TDL050855	10TDL065675
10TDL005990	10TDL020630	10TDL035420	10TDL050195	10TDL050870	10TDL065690
10TDL020030	10TDL020645	10TDL035435	10TDL050210	10TDL050885	10TDL065705
10TDL020045	10TDL020660	10TDL035450	10TDL050225	10TDL050900	10TDL065720
10TDL020060	10TDL020675	10TDL035465	10TDL050240	10TDL050915	10TDL065735
10TDL020075	10TDL020690	10TDL035480	10TDL050255	10TDL050930	10TDL065750
10TDL020090	10TDL020705	10TDL035495	10TDL050270	10TDL050945	10TDL065765
10TDL020105	10TDL020720	10TDL035510	10TDL050285	10TDL050960	10TDL065780
10TDL020120	10TDL020735	10TDL035525	10TDL050300	10TDL050975	10TDL065795
10TDL020135	10TDL020750	10TDL035540	10TDL050315	10TDL050990	10TDL065810
10TDL020150	10TDL020765	10TDL035555	10TDL050330	10TDL065120	10TDL065825
10TDL020165	10TDL020780	10TDL035570	10TDL050345	10TDL065135	10TDL065840
10TDL020180	10TDL020795	10TDL035585	10TDL050360	10TDL065150	10TDL065855
10TDL020195	10TDL020810	10TDL035600	10TDL050375	10TDL065165	10TDL065870
10TDL020210	10TDL020825	10TDL035615	10TDL050390	10TDL065180	10TDL065885

10TDL065900	10TDL080765	10TDL095750	10TDL110975	10TDL215915	10TDM020080
10TDL065915	10TDL080780	10TDL095765	10TDL110990	10TDL230870	10TDM020095
10TDL065930	10TDL080795	10TDL095780	10TDL125705	10TDM005005	10TDM020110
10TDL065945	10TDL080810	10TDL095795	10TDL125720	10TDM005020	10TDM020125
10TDL065960	10TDL080825	10TDL095810	10TDL125735	10TDM005035	10TDM020140
10TDL065975	10TDL080840	10TDL095825	10TDL125840	10TDM005050	10TDM020155
10TDL065990	10TDL080855	10TDL095840	10TDL125855	10TDM005065	10TDM020170
10TDL080120	10TDL080870	10TDL095855	10TDL125870	10TDM005080	10TDM020185
10TDL080135	10TDL080885	10TDL095870	10TDL125930	10TDM005095	10TDM020200
10TDL080150	10TDL080900	10TDL095885	10TDL125945	10TDM005110	10TDM020215
10TDL080165	10TDL080915	10TDL095900	10TDL125960	10TDM005125	10TDM020230
10TDL080180	10TDL080930	10TDL095915	10TDL125975	10TDM005140	10TDM020245
10TDL080195	10TDL080945	10TDL095930	10TDL125990	10TDM005155	10TDM020260
10TDL080210	10TDL080960	10TDL095945	10TDL140855	10TDM005170	10TDM020275
10TDL080225	10TDL080975	10TDL095960	10TDL140930	10TDM005185	10TDM020290
10TDL080240	10TDL080990	10TDL095975	10TDL140945	10TDM005200	10TDM020305
10TDL080255	10TDL095105	10TDL095990	10TDL140960	10TDM005215	10TDM020320
10TDL080270	10TDL095120	10TDL110180	10TDL140975	10TDM005230	10TDM020335
10TDL080285	10TDL095135	10TDL110195	10TDL140990	10TDM005245	10TDM020350
10TDL080300	10TDL095150	10TDL110210	10TDL155930	10TDM005260	10TDM020365
10TDL080315	10TDL095165	10TDL110225	10TDL155945	10TDM005275	10TDM020380
10TDL080375	10TDL095180	10TDL110285	10TDL155960	10TDM005290	10TDM020395
10TDL080390	10TDL095195	10TDL110300	10TDL155975	10TDM005305	10TDM020410
10TDL080405	10TDL095210	10TDL110690	10TDL170915	10TDM005320	10TDM020425
10TDL080420	10TDL095225	10TDL110705	10TDL170930	10TDM005335	10TDM020440
10TDL080525	10TDL095240	10TDL110720	10TDL170945	10TDM005350	10TDM020485
10TDL080540	10TDL095255	10TDL110735	10TDL170960	10TDM005365	10TDM020500
10TDL080555	10TDL095270	10TDL110750	10TDL185900	10TDM005380	10TDM035005
10TDL080570	10TDL095285	10TDL110780	10TDL185915	10TDM005395	10TDM035020
10TDL080585	10TDL095300	10TDL110795	10TDL185930	10TDM005410	10TDM035035
10TDL080600	10TDL095390	10TDL110810	10TDL185945	10TDM005425	10TDM035050
10TDL080615	10TDL095405	10TDL110825	10TDL185960	10TDM005440	10TDM035065
10TDL080630	10TDL095555	10TDL110840	10TDL200885	10TDM005455	10TDM035080
10TDL080645	10TDL095630	10TDL110855	10TDL200900	10TDM005470	10TDM035095
10TDL080660	10TDL095645	10TDL110870	10TDL200915	10TDM005485	10TDM035110
10TDL080675	10TDL095660	10TDL110885	10TDL200930	10TDM005500	10TDM035125
10TDL080690	10TDL095675	10TDL110900	10TDL200945	10TDM020005	10TDM035140
10TDL080705	10TDL095690	10TDL110915	10TDL200960	10TDM020020	10TDM035155
10TDL080720	10TDL095705	10TDL110930	10TDL215870	10TDM020035	10TDM035170
10TDL080735	10TDL095720	10TDL110945	10TDL215885	10TDM020050	10TDM035185
10TDL080750	10TDL095735	10TDL110960	10TDL215900	10TDM020065	10TDM035200

10TDM035215	10TDM035395	10TDM050140	10TDM050410	10TDM065305	10TDM080335
10TDM035230	10TDM035410	10TDM050155	10TDM065005	10TDM065320	10TDM080350
10TDM035245	10TDM035425	10TDM050170	10TDM065020	10TDM065335	10TDM095005
10TDM035260	10TDM050005	10TDM050185	10TDM065035	10TDM065350	10TDM095020
10TDM035275	10TDM050020	10TDM050200	10TDM065050	10TDM065365	10TDM095035
10TDM035290	10TDM050035	10TDM050305	10TDM065065	10TDM080005	10TDM095050
10TDM035305	10TDM050050	10TDM050320	10TDM065080	10TDM080020	10TDM110005
10TDM035320	10TDM050065	10TDM050335	10TDM065095	10TDM080035	10TDM110020
10TDM035335	10TDM050080	10TDM050350	10TDM065110	10TDM080050	10TDM110035
10TDM035350	10TDM050095	10TDM050365	10TDM065125	10TDM080065	10TDM125005
10TDM035365	10TDM050110	10TDM050380	10TDM065140	10TDM080080	10TDM125020
10TDM035380	10TDM050125	10TDM050395	10TDM065155	10TDM080095	10TDM125035