

## NORTH CAROLINA GEODETIC SURVEY

Claude T Bowers Building  
4105 Reedy Creek Road  
Raleigh, North Carolina 27607  
(919)733-3836



---

## Project Information

Prepared By: Watson Ross  
Project Name: 2016 LiDAR Phase 4 QC  
Sensor Info: GmAPD Geiger-mode  
Required Nominal Pulse Spacing: 0.35  
Vendor Name: Harris  
Units: US Survey Feet  
Percent of Extent Tolerance: Extents Not Checked  
Date of Aquisition: Start: 2/27/2016 Finish: 4/17/2016

---

## Metadata Information

### Tile Index:

Filename: catawba\_tiles.shp

Number of Polys: 0

### Intensity:

Tile Index Attribute: Not Specified

Data Filename: Not Specified

Number of Data Files Matching Attribute: Not Specified

### DEM:

Tile Index Attribute: Not Specified

Data Filename: Not Specified

Number of Data Files Matching Attribute: Not Specified

### LAS:

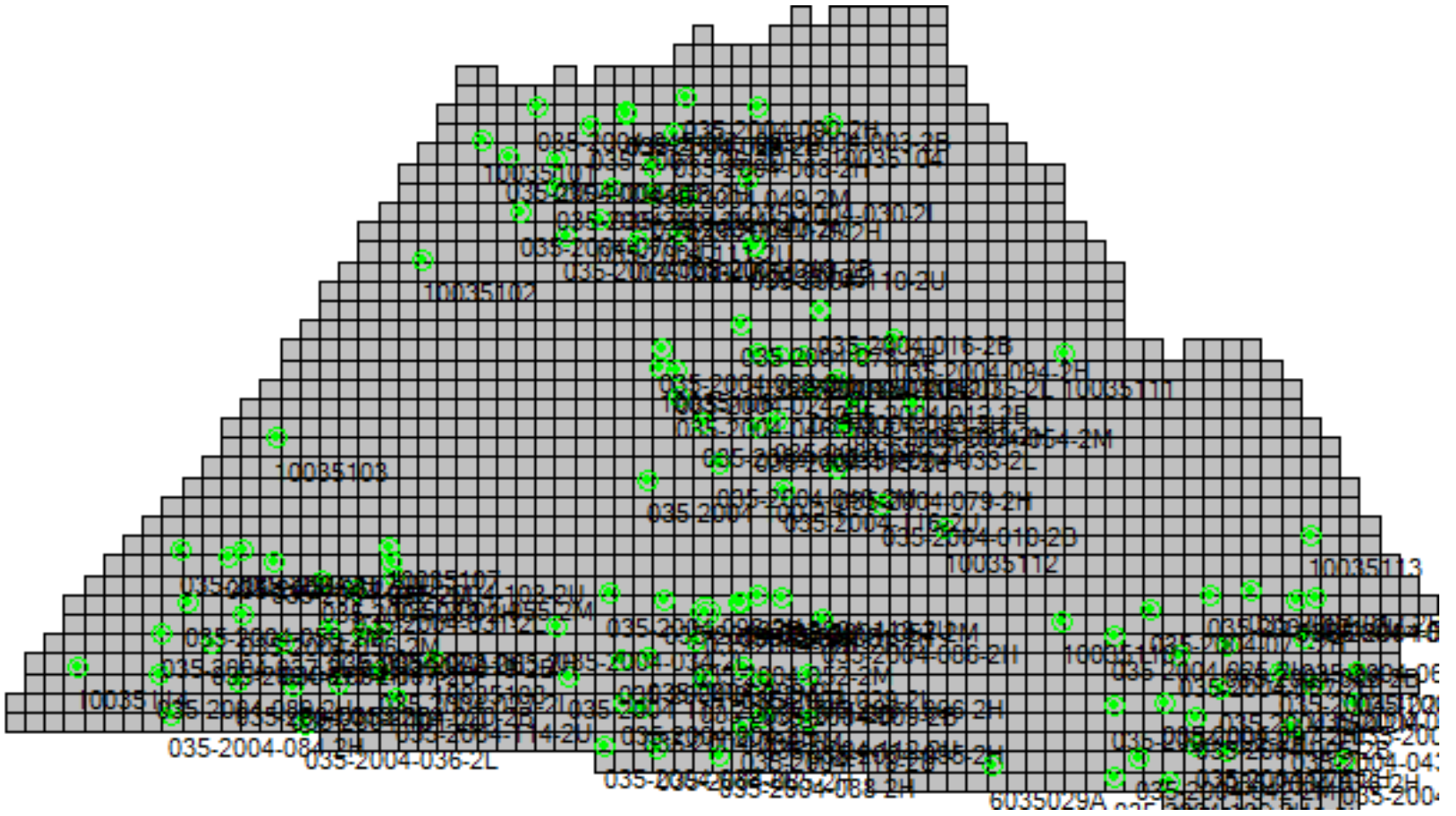
Tile Index Attribute: las\_tile

Data Filename: Masspoints

Number of Data Files Matching Attribute: 2165 out of 2165



# Tiled-Data Area





LiDAR Accuracy Assessment Summary

LC Type	# of Points	NVA	VVA	
LAS				
2B	19	0.535		
2H	39		0.464	
2L	19		0.555	
2M	19		0.402	
2U	35	0.239		
Total	131			

Units: US Survey Feet



# LAS

## Nonvegetated Vertical Accuracy

LandCover Type: 2B, 2U

Minimum DZ: -0.598

Maximum DZ: 0.418

Mean DZ: 0.077

Mean Magnitude DZ: 0.378

Number Observations: 54

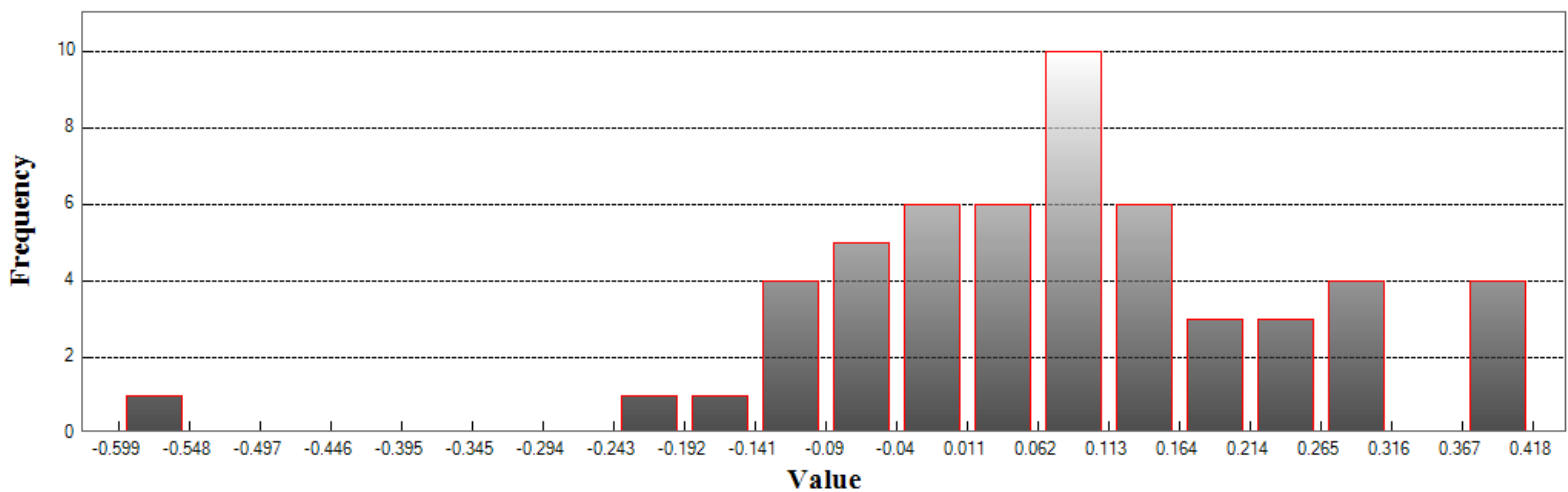
Standard Deviation DZ: 0.175

RMSE Z: 0.189

95% Confidence Level Z: 0.371

Units: US Survey Feet

# Histogram



Min: -0.598

Max: 0.418

Number Of Bins: 20

Bin Interval: 0.051

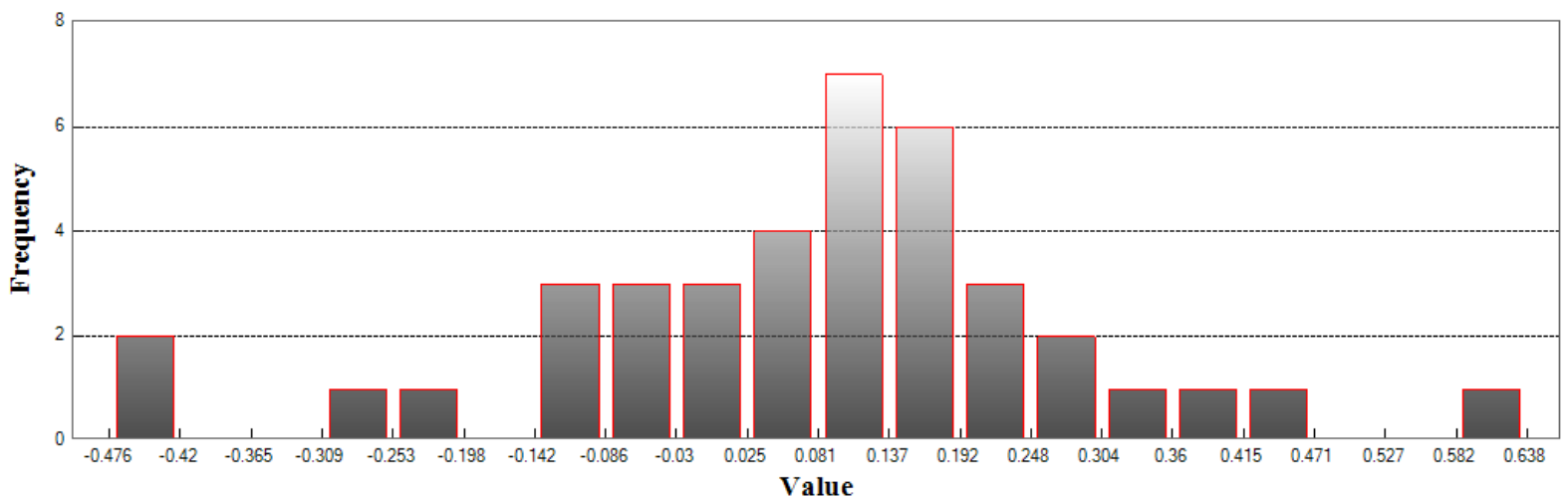


## LAS (Continued)

### Vegetated Vertical Accuracy

LandCover Type: 2H  
Minimum DZ: -0.476  
Maximum DZ: 0.638  
Mean DZ: 0.079  
Mean Magnitude DZ: 0.424  
Number Observations: 39  
Standard Deviation DZ: 0.217  
RMSE Z: 0.228  
95th Percentile: 0.464  
Units: US Survey Feet

## Histogram



Min: -0.476

Max: 0.638

Number Of Bins: 20

Bin Interval: 0.056

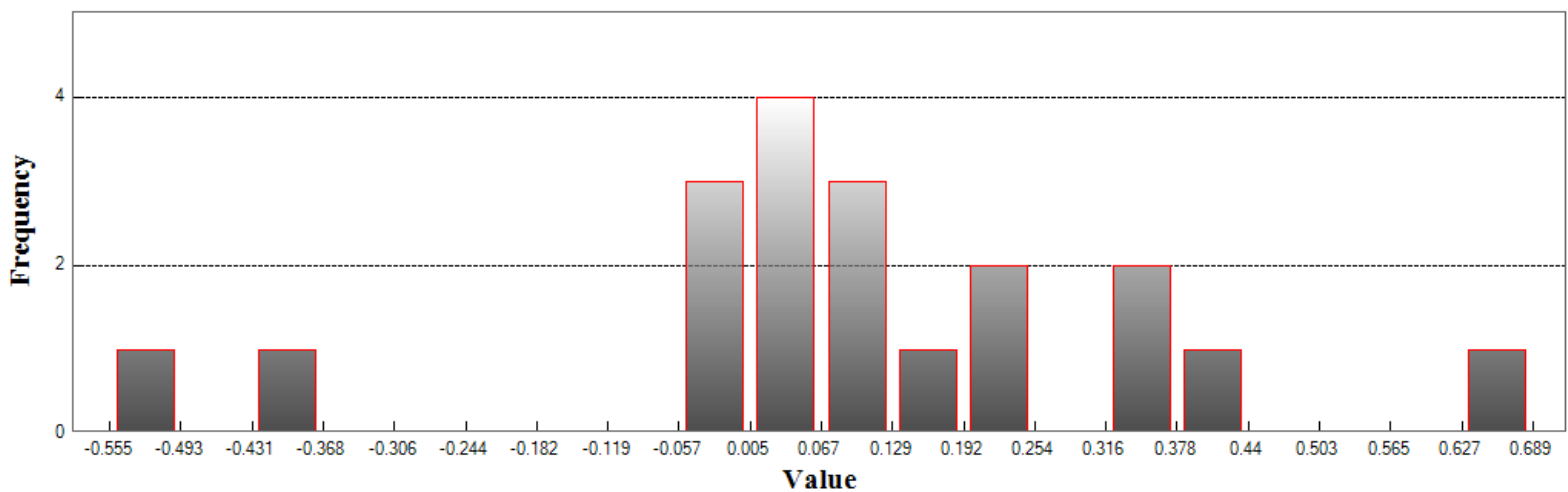


## LAS (Continued)

### Vegetated Vertical Accuracy

LandCover Type: 2L  
Minimum DZ: -0.555  
Maximum DZ: 0.689  
Mean DZ: 0.096  
Mean Magnitude DZ: 0.447  
Number Observations: 19  
Standard Deviation DZ: 0.272  
RMSE Z: 0.281  
95th Percentile: 0.555  
Units: US Survey Feet

## Histogram



Min: -0.555

Max: 0.689

Number Of Bins: 20

Bin Interval: 0.062

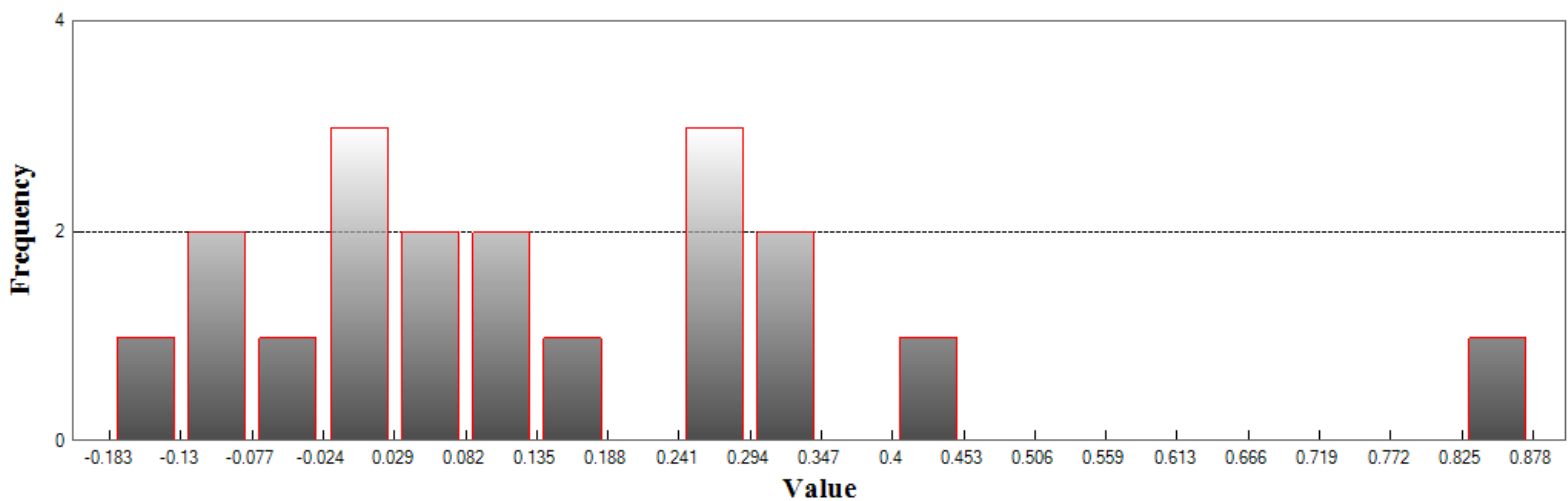


## LAS (Continued)

### Vegetated Vertical Accuracy

LandCover Type: 2M  
Minimum DZ: -0.184  
Maximum DZ: 0.877  
Mean DZ: 0.143  
Mean Magnitude DZ: 0.441  
Number Observations: 19  
Standard Deviation DZ: 0.246  
RMSE Z: 0.278  
95th Percentile: 0.402  
Units: US Survey Feet

## Histogram



Min: -0.184

Max: 0.877

Number Of Bins: 20

Bin Interval: 0.053