

2005680 Western Seminole County LiDAR Fundamental Vertical Accuracy Report
UTM Zone 17 (Meters) NAD83, NAVD88 (Feet)

<u>Point No.</u>	<u>Easting</u>	<u>Northing</u>	<u>Elevation</u>	<u>Laser DTM Elev</u>	<u>Difference</u>	<u>Difference²</u>
O1	476623.19	3184382.37	33.858	33.08	-0.778	0.605284
A1	453893.51	3169119.52	123.976	123.48	-0.496	0.246016
B1	454275.47	3172045.9	89.232	88.75	-0.482	0.232324
D1	458122.44	3175573.72	55.899	55.43	-0.469	0.219961
O2	476655.56	3184414.9	31.129	30.67	-0.459	0.210681
D2	458124.49	3175519.1	48.898	48.45	-0.448	0.200704
F1	462155.6	3174713.27	57.447	57.05	-0.397	0.157609
T1	466910.4	3170359.73	87.539	87.17	-0.369	0.136161
F2	462173.78	3174670.18	62.894	62.61	-0.284	0.080656
B2	454298.64	3172060.6	88.799	88.53	-0.269	0.072361
E1	462288.6	3171754.74	82.3	82.06	-0.24	0.0576
A2	453898.95	3169169.96	123.08	122.85	-0.23	0.0529
S2	474063.72	3174694.42	44.557	44.34	-0.217	0.047089
P1	470635.65	3183463.79	44.879	44.71	-0.169	0.028561
K2	455290.7	3181853.15	36.565	36.41	-0.155	0.024025
S1	474221.49	3174652.52	47.424	47.29	-0.134	0.017956
J2	464825.85	3188990.89	25.472	25.34	-0.132	0.017424
H2	466056.8	3182280.25	68.733	68.62	-0.113	0.012769
H1	466086.6	3182245.72	67.966	67.86	-0.106	0.011236
Q1	473911.38	3181300.95	45.764	45.66	-0.104	0.010816
E2	462266.01	3171729.42	80.088	79.99	-0.098	0.009604
I1	463976.54	3185094.31	59.511	59.42	-0.091	0.008281
L2	457043.67	3187356.34	36.581	36.49	-0.091	0.008281
R1	468274.24	3176438.33	61.929	61.9	-0.029	0.000841
L1	456992.13	3187293.13	36.227	36.2	-0.027	0.000729
R2	468262.92	3176454.03	62.67	62.69	0.02	0.0004
Q2	473843.66	3181324.67	40.758	40.8	0.042	0.001764
I2	463934.32	3185113.34	59.468	59.56	0.092	0.008464
T2	466946.66	3170296.81	91.269	91.39	0.121	0.014641
J1	464836.24	3188932.06	24.298	24.43	0.132	0.017424
P2	470773.8	3183486.46	45.466	45.6	0.134	0.017956
G2	460829.5	3180925.54	21.224	21.45	0.226	0.051076
M2	468383.86	3189808.11	10.213	10.44	0.227	0.051529
N2	472046.44	3187086.01	16.384	16.63	0.246	0.060516
C2	453189.13	3175595.18	83.533	83.83	0.297	0.088209
C1	453200.74	3175586.9	83.307	83.64	0.333	0.110889
G1	460778.04	3180953.08	19.111	19.47	0.359	0.128881
N1	471997.29	3187125.66	15.889	16.27	0.381	0.145161
M1	468374.44	3189805.14	10.866	11.3	0.434	0.188356

<u>Min</u>	-0.78
<u>Max</u>	0.43
<u>Mean</u>	-0.09
<u>StDev (One Sigma)</u>	0.28
<u>StDev (Two Sigma)</u>	0.57
<u>RMS</u>	0.29
<u>Skewness</u>	-0.12
<u>Kurtosis</u>	-0.36

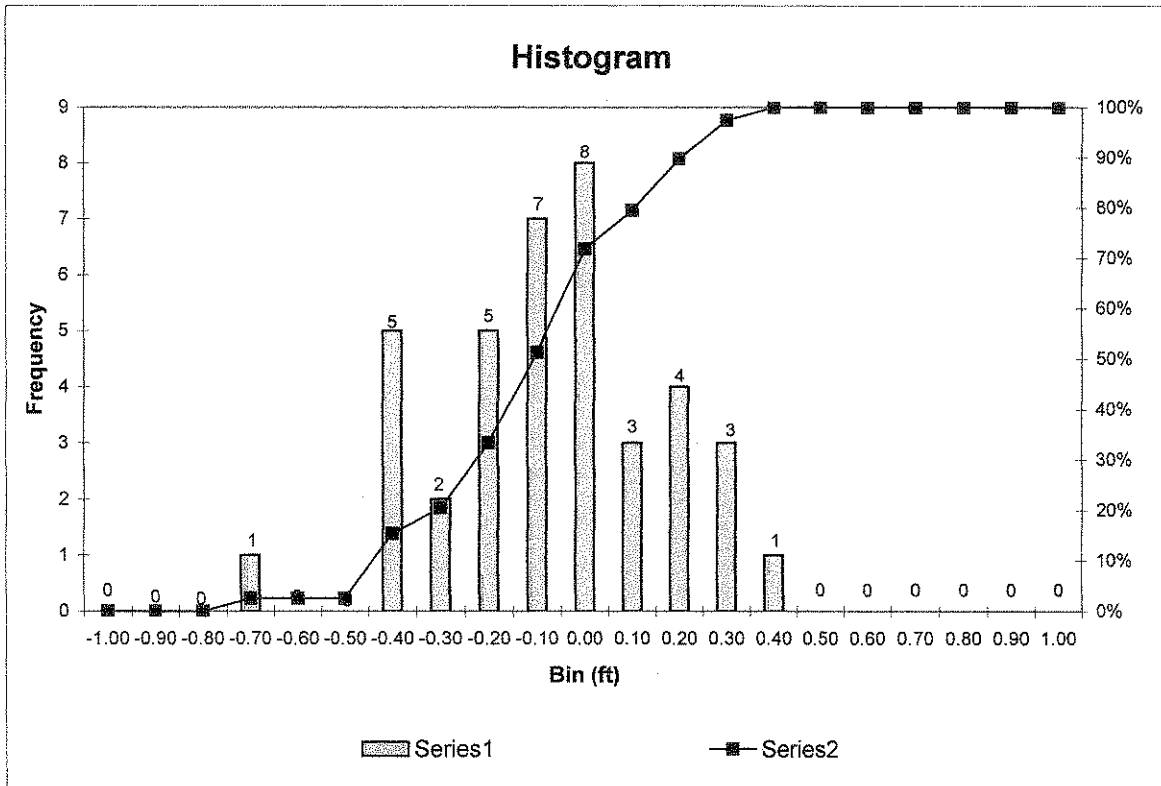
"Tested 0.6 feet vertical accuracy at 95 percent confidence level using RMSE procedures with no outliers."

Bin (m)	Frequency	Cumulative %	Normalized Distribution
-1.00	0	0.00%	.00%
-0.90	0	0.00%	.00%
-0.80	0	0.00%	.00%
-0.70	1	2.56%	2.56%
-0.60	0	2.56%	.00%
-0.50	0	2.56%	.00%
-0.40	5	15.38%	12.82%
-0.30	2	20.51%	5.13%
-0.20	5	33.33%	12.82%
-0.10	7	51.28%	17.95%
0.00	8	71.79%	20.51%
0.10	3	79.49%	7.69%
0.20	4	89.74%	10.26%
0.30	3	97.44%	7.69%
0.40	1	100.00%	2.56%
0.50	0	100.00%	.00%
0.60	0	100.00%	.00%
0.70	0	100.00%	.00%
0.80	0	100.00%	.00%
0.90	0	100.00%	.00%
1.00	0	100.00%	.00%

39

Summary Statistics	
Mean	-0.09
Standard Error	0.30
Median	-0.1
Mode	-0.09
Standard Deviation	0.28
Sample Variance	0.08
Kurtosis	-0.36
Skewness	-0.12
Range	1.21
Minimum	-0.78
Maximum	0.43
Sum	1
Count	39
Confidence Level(95.0%)	95%

<u>points within:</u>	
-1.00 to -0.61	2.56%
-0.60 to -0.31 (ft)	17.95%
-0.30 to 0.30 (ft)	69.23%
0.31 to 0.60 (ft)	10.26%
0.61 to 1.00 (ft)	0.00%
<i>Percentage of points falling within 0.60 ft</i>	
	97%



Outliers

<u>Point No.</u>	<u>Easting</u>	<u>Northing</u>	<u>Elevation</u>	<u>Laser DTM Elev</u>	<u>Difference</u>	<u>Difference²</u>
------------------	----------------	-----------------	------------------	-----------------------	-------------------	-------------------------------