

2005680 Western Seminole County LIDAR Supplemental Vertical Accuracy Report
 UTM Zone 17(Meters) NAD83, NAVD88 (Feet)

<u>Point No.</u>	<u>Easting</u>	<u>Northing</u>	<u>Elevation</u>	<u>Laser DTM Elev</u>	<u>Difference</u>	<u>Difference²</u>
T4	466950.48	3170322.93	91.269	90.25	-1.019	1.038361
Q4	473828.98	3181456.75	41.355	40.34	-1.015	1.030225
S4	474175.32	3174584.83	44.669	44.4	-0.269	0.072361
F4	462250.93	3174780.77	60.269	60.03	-0.239	0.057121
F3	462224.48	3174762.58	59.485	59.27	-0.215	0.046225
T3	466929.94	3170307.94	91.312	91.18	-0.132	0.017424
B3	454292.72	3172051.14	89.025	88.95	-0.075	0.005625
N3	472029.74	3187108.71	16.588	16.53	-0.058	0.003364
R4	468271.08	3176479.72	60.817	60.76	-0.057	0.003249
E3	462261.41	3171681.59	77.109	77.06	-0.049	0.002401
J3	464826.38	3188975.83	25.974	25.96	-0.014	0.000196
E4	462304.9	3171774.21	82.333	82.35	0.017	0.000289
H3	466045.44	3182288.92	69.042	69.08	0.038	0.001444
K4	455194.55	3181880.44	39.813	39.86	0.047	0.002209
M3	468354.81	3189781.09	8.474	8.54	0.066	0.004356
D4	458118.94	3175503.12	48.271	48.35	0.079	0.006241
S3	474145.24	3174643.94	45.833	45.93	0.097	0.009409
A3	453883.86	3169196.36	123.271	123.41	0.139	0.019321
I3	463892.96	3185085.15	60.833	61	0.167	0.027889
H4	466065.57	3182223.22	66.466	66.65	0.184	0.033856
P4	470660.37	3183465.13	44.419	44.62	0.201	0.040401
M4	468411.24	3189828.53	2.756	2.99	0.234	0.054756
K3	455252.3	3181865.21	37.779	38.04	0.261	0.068121
C4	453248.62	3175642.2	83.691	83.96	0.269	0.072361
A4	453939.37	3169133.81	123.851	124.13	0.279	0.077841
R3	468212.16	3176457.04	60.548	60.83	0.282	0.079524
O4	476625.97	3184348.74	32.946	33.23	0.284	0.080656
I4	463999.21	3185118.45	57.595	57.89	0.295	0.087025
N4	472042.61	3187118.49	15.896	16.21	0.314	0.098596
L4	457058.22	3187350.58	36.457	36.78	0.323	0.104329
O3	476678.18	3184421.39	30.709	31.12	0.411	0.168921
J4	464730.13	3188852.81	24.757	25.2	0.443	0.196249
Q3	473812.75	3181335.91	40.154	40.65	0.496	0.246016
P3	470648.3	3183487.3	43.182	43.75	0.568	0.322624
G3	460819.09	3180981.27	20.889	21.46	0.571	0.326041
D3	458137.14	3175510.59	47.621	48.23	0.609	0.370881
B4	454299.51	3172081.46	89.705	90.43	0.725	0.525625
L3	457010.93	3187325.26	35.348	36.09	0.742	0.550564
					0.1755	

<u>Min</u>	-1.02
<u>Max</u>	0.74
<u>Mean</u>	0.13
<u>StDev (One Sigma)</u>	0.37
<u>StDev (Two Sigma)</u>	0.74
<u>RMS</u>	0.39
<u>Skewness</u>	-1.32
<u>Kurtosis</u>	3.32

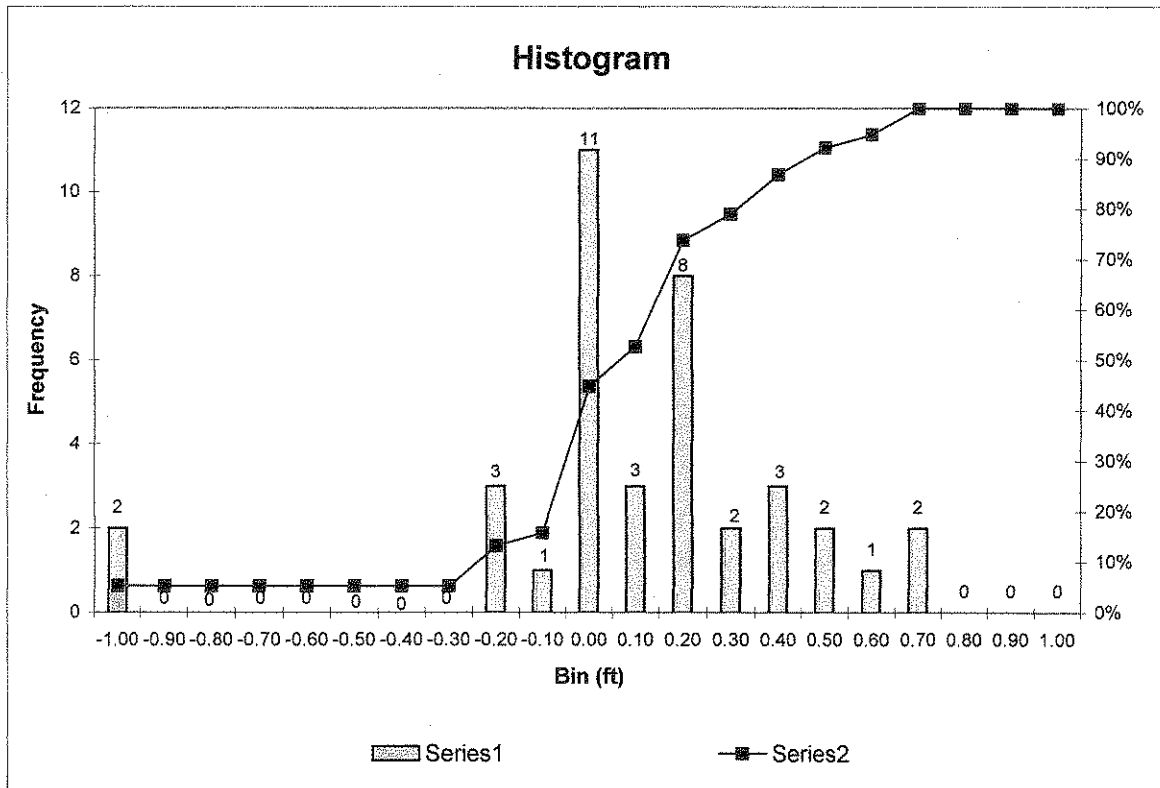
"Tested 1.02 feet vertical accuracy at 95 percent confidence level, determined by the 95th percentile method."

Bin (m)	Frequency	Cumulative %	Normalized Distribution
-1.00	2	5.26%	5.26%
-0.90	0	5.26%	.00%
-0.80	0	5.26%	.00%
-0.70	0	5.26%	.00%
-0.60	0	5.26%	.00%
-0.50	0	5.26%	.00%
-0.40	0	5.26%	.00%
-0.30	0	5.26%	.00%
-0.20	3	13.16%	7.89%
-0.10	1	15.79%	2.63%
0.00	11	44.74%	28.95%
0.10	3	52.63%	7.89%
0.20	8	73.68%	21.05%
0.30	2	78.95%	5.26%
0.40	3	86.84%	7.89%
0.50	2	92.11%	5.26%
0.60	1	94.74%	2.63%
0.70	2	100.00%	5.26%
0.80	0	100.00%	.00%
0.90	0	100.00%	.00%
1.00	0	100.00%	.00%

38

Summary Statistics	
Mean	0.13
Standard Error	0.36
Median	0.18
Mode	0.28
Standard Deviation	0.37
Sample Variance	0.14
Kurtosis	3.16
Skewness	-1.30
Range	1.76
Minimum	-1.02
Maximum	0.74
Sum	4.99
Count	38

<u>points within:</u>	
-1.00 to -0.60	5.3%
-0.59 to -0.30 (ft)	0.0%
-0.29 to 0.29 (ft)	68.4%
0.30 to 0.59 (ft)	21.1%
0.60 to 1.30 (ft)	5.3%
Percentage of points falling within 1.02 ft	100%



Outliers

<u>Point No.</u>	<u>Easting</u>	<u>Northing</u>	<u>Elevation</u>	<u>Laser DTM Elev</u>	<u>Difference</u>	<u>Difference²</u>
C3	453161.55	3175621.46	84.265	85.87	1.605	2.576025
G4	460771.25	3180984.14	19.511	21.25	1.739	3.024121