

LiDAR Remote Sensing Data Collection
Department of Geology and Mineral Industries
Central Coast Study Area
January 31, 2012

Submitted to:

Department of Geology and Mineral Industries
800 NE Oregon Street, Suite 965
Portland, OR 97232



Submitted by:

Watershed Sciences
529 SW 3rd Avenue, Suite 300
Portland, OR 97204



LIDAR REMOTE SENSING DATA COLLECTION: DOGAMI, CENTRAL COAST STUDY AREA

TABLE OF CONTENTS

1. Overview	1
1.1 Study Area	1
1.2 Area Delivered to Date	2
2. Acquisition	3
2.1 Airborne Survey Overview - Instrumentation and Methods	3
2.2 Ground Survey - Instrumentation and Methods	5
2.2.1 Instrumentation.....	5
2.2.2 Monumentation	5
2.2.3 Methodology	5
3. Accuracy	10
3.1 Relative Accuracy	10
3.2 Absolute Accuracy.....	12
4. Data Density/Resolution	14
4.1 Density Statistics	14
6. Selected Imagery	20

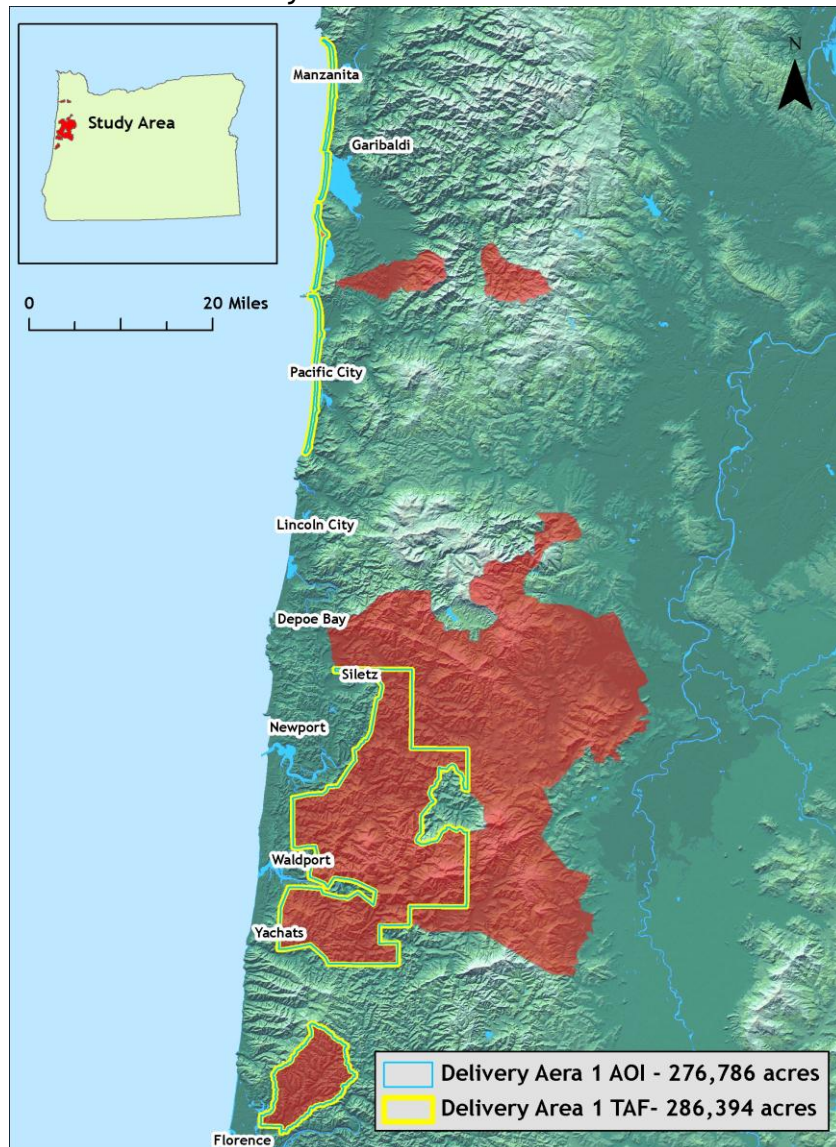


1. Overview

1.1 Study Area

Watershed Sciences, Inc. has collected Light Detection and Ranging (LiDAR) data of the Oregon Central Coast Study Area for the Oregon Department of Geology and Mineral Industries (DOGAMI). The Total Central Coast area of interest (AOI) totals 1,230 square miles (787,377 acres) and the total area flown (TAF) covers 1,260 square miles (806,579 acres). The TAF acreage is greater than the original AOI acreage due to buffering and flight planning optimization (Figure 1.1 below). Central Coast data are delivered in: OGIC (HARN): Projection: Oregon Statewide Lambert Conformal Conic; horizontal and vertical datum: NAD83 (HARN)/NAVD88 (Geoid03); units: International Feet.

Figure 1.1. *DOGAMI Central Coast Study Area.*

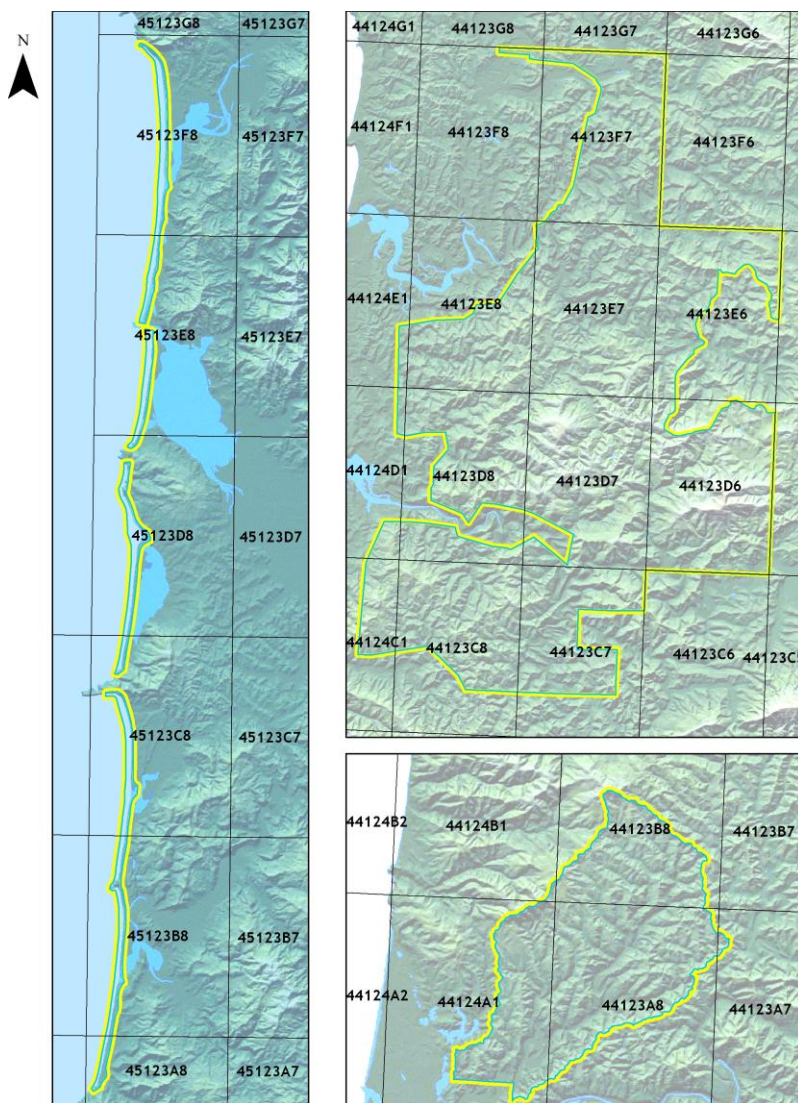


1.2 Area Delivered to Date

Total delivered acreage to date is detailed below.

DOGAMI Central Coast Study Area				
	Delivery Date	Acquisition Dates	AOI Acres	TAF Acres
Delivery Area 1	January 31, 2012	September 2, 2011- November 22, 2011	276,786	286,394

Figure 1.3. Central Coast Delivery area 1, illustrating the delivered 7.5 minute USGS quads.



2. Acquisition

2.1 Airborne Survey Overview - Instrumentation and Methods

The LiDAR survey utilized Leica ALS 50, ALS 60 and ALS70 sensors mounted in Cessna Caravan 208B and Partenavia P.38 aircrafts. The systems were set to acquire $\geq 105,000$ laser pulses per second (i.e. 105 kHz pulse rate) and flown at 900 and 1400 meters above ground level (AGL), capturing a scan angle of $\pm 14^\circ$ from nadir¹. These settings are developed to yield points with an average native density of ≥ 8 points per square meter over terrestrial surfaces. The native pulse density is the number of pulses emitted by the LiDAR system. Some types of surfaces (i.e. dense vegetation or water) may return fewer pulses than the laser originally emitted. Therefore, the delivered density can be less than the native density and lightly variable according to distributions of terrain, land cover and water bodies.



The Cessna Caravan is a powerful, stable platform, which is ideal for the often remote and mountainous terrain found in the Pacific Northwest. The Leica ALS60 sensor head installed in the Caravan is shown on the right.

Table 2.1 LiDAR Survey Specifications

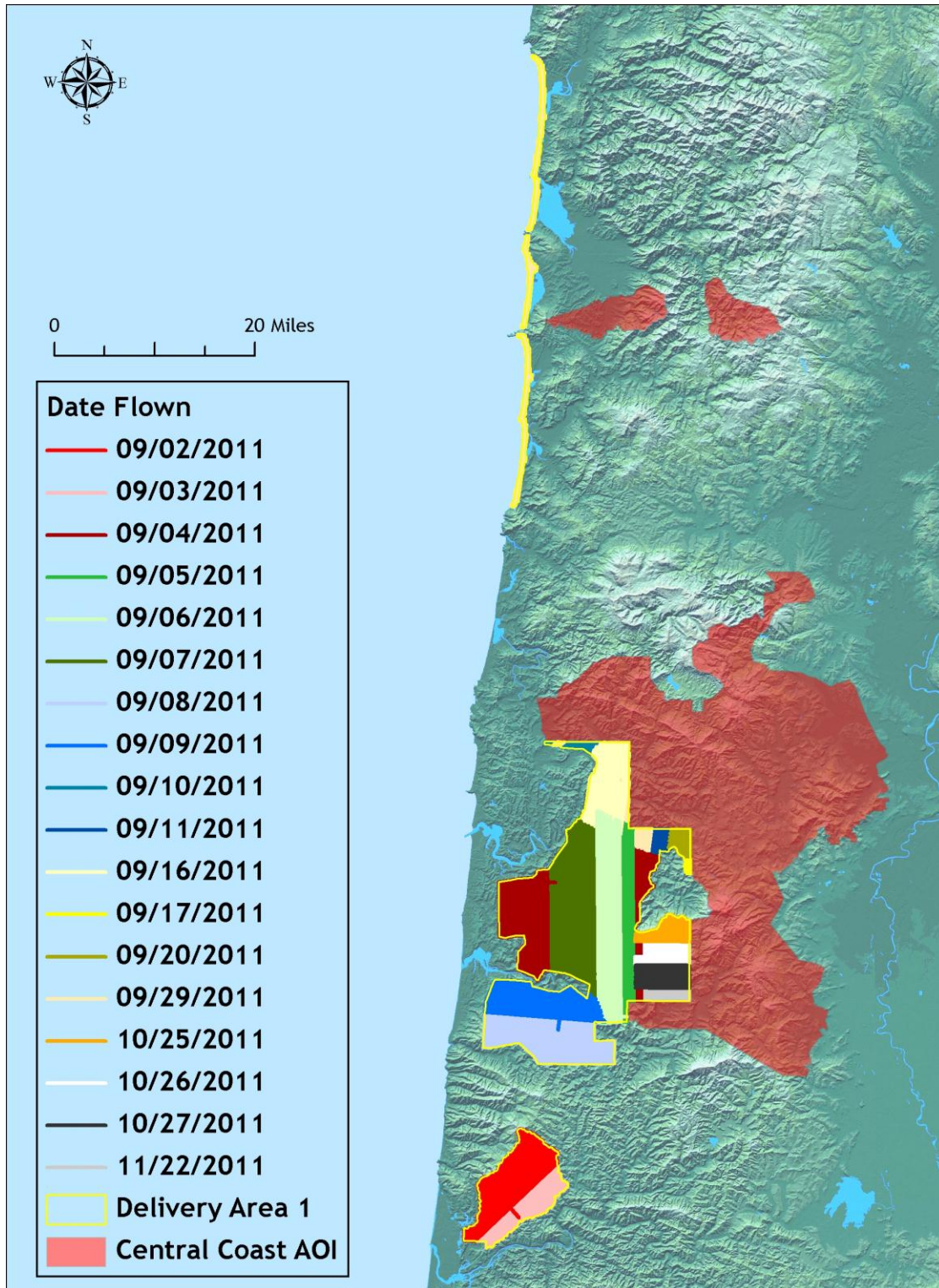
Sensors	Leica ALS50; ALS60; ALS70
Survey Altitude (AGL)	900 m and 1400 m
Pulse Rate	>105 kHz
Pulse Mode	Single
Mirror Scan Rate	52 Hz
Field of View	30° ($\pm 14^\circ$ from nadir)
Roll Compensated	Up to 15°
Overlap	100% (60% Side-lap)

The study area was surveyed with opposing flight line side-lap of $\geq 60\%$ ($\geq 100\%$ overlap) to reduce laser shadowing and increase surface laser painting. The system allows up to four range measurements per pulse, and all discernable laser returns were processed for the output dataset.

To solve for laser point position, it is vital to have an accurate description of aircraft position and attitude. Aircraft position is described as x, y and z and measured twice per second (2 Hz) by an onboard differential GPS unit. Aircraft attitude is measured 200 times per second (200 Hz) as pitch, roll and yaw (heading) from an onboard inertial measurement unit (IMU). **Figure 2.1** shows the flight lines completed for current processing.

¹ Nadir refers to the perpendicular vector to the ground directly below the aircraft. Nadir is commonly used to measure the angle from the vector and is referred to a “degrees from nadir”.

Figure 2.1. Actual flightlines for the Central Coast Study Area illustrating the dates flown for processing.



2.2 Ground Survey - Instrumentation and Methods

During the LiDAR survey, static (1 Hz recording frequency) ground surveys were conducted over monuments with known coordinates. Monument coordinates are provided in **Table 2.2** and shown in **Figure 2.2**. After the airborne survey, the static GPS data were processed using triangulation with CORS stations and checked against the Online Positioning User Service (OPUS²) to quantify daily variance. Multiple sessions were processed over the same monument to confirm antenna height measurements and reported position accuracy.

2.2.1 Instrumentation

For this study area all Global Navigation Satellite System (GNSS³) survey work utilizes a Trimble GPS receiver model R7 with a Zephyr Geodetic antenna with ground plane for static control points. The Trimble GPS R8 unit is used primarily for Real Time Kinematic (RTK) work but can also be used as a static receiver. For RTK data, the collector begins recording after remaining stationary for 5 seconds then calculating the pseudo range position from at least three epochs with the relative error under 1.5 cm horizontal and 2 cm vertical. All GPS measurements are made with dual frequency L1-L2 receivers with carrier-phase correction.

2.2.2 Monumentation



Whenever possible, existing and established survey benchmarks shall serve as control points during LiDAR acquisition including those previously set by Watershed Sciences. In addition to NGS, the county surveyor's offices and the Oregon Department of Transportation (ODOT) often establish their own benchmarks. NGS benchmarks are preferred for control points. In the absence of NGS benchmarks, county surveys, or ODOT monumentation, Watershed Sciences produces our own monuments. These monuments are spaced at a minimum of one mile and every effort is made to keep these monuments within the public right of way or on public lands. If monuments are required on private property, consent from the owner is required. All

monumentation is done with 5/8" x 30" rebar topped with a 2" diameter aluminum cap stamped "Watershed Sciences, Inc."

2.2.3 Methodology

Each aircraft is assigned a ground crew member with two R7 receivers and an R8 receiver. The ground crew vehicles are equipped with standard field survey supplies and equipment including safety materials. All control points are observed for a minimum of two survey sessions lasting no fewer than 2 hours. At the beginning of every session the tripod and antenna are reset, resulting in two independent instrument



² Online Positioning User Service (OPUS) is run by the National Geodetic Survey to process corrected monument positions.

³ GNSS: Global Navigation Satellite System consisting of the U.S. GPS constellation and Soviet GLONASS constellation

heights and data files. Data are collected at a rate of 1Hz using a 10 degree mask on the antenna.

The ground crew uploads the GPS data to the Dropbox website on a daily basis to be returned to the office for Professional Land Surveyor (PLS) oversight, Quality Assurance/Quality Control (QA/QC) review and processing. OPUS processing triangulates the monument position using 3 CORS stations resulting in a fully adjusted position. CORPSCON⁴ 6.0.1 software is used to convert the geodetic positions from the OPUS reports. After multiple days of data have been collected at each monument, accuracy and error ellipses are calculated. This information leads to a rating of the monument based on FGDC-STD-007.2-1998⁵ Part 2 table 2.1 at the 95% confidence level.



All RTK measurements were made during periods with a Position Dilution of Precision (PDOP) of ≤ 3.0 and in view of at least six satellites by the stationary reference and roving receiver. RTK positions are collected on 20% of the flight lines and on bare earth locations such as paved, gravel or stable dirt roads, and other locations where the ground is clearly visible (and is likely to remain visible) from the sky during the data acquisition and RTK measurement period(s). In order to facilitate comparisons with LiDAR measurements, RTK measurements are not taken on highly reflective surfaces such as center line stripes or lane markings on roads. RTK points were taken no closer than one

meter to any nearby terrain breaks such as road edges or drop offs. In addition, it is desirable to include locations that can be readily identified and occupied during subsequent field visits in support of other quality control procedures described later. Examples of identifiable locations would include manhole and other flat utility structures that have clearly indicated center points or other measurement locations. In the absence of utility structures, a PK nail can be driven into asphalt or concrete and marked with paint.

Multiple differential GPS units were used in the ground based real-time kinematic (RTK) portion of the survey. To collect accurate ground surveyed points, a GPS base unit was set up over monuments to broadcast a kinematic correction to a roving GPS unit. The ground crew used a roving unit to receive radio-relayed kinematic corrected positions from the base unit. This RTK survey allowed precise location measurement ($\sigma \leq 1.5$ cm). **Figure 2.3** shows subsets of these RTK locations.



⁴ U.S. Army Corps of Engineers , Engineer Research and Development Center Topographic Engineering Center software

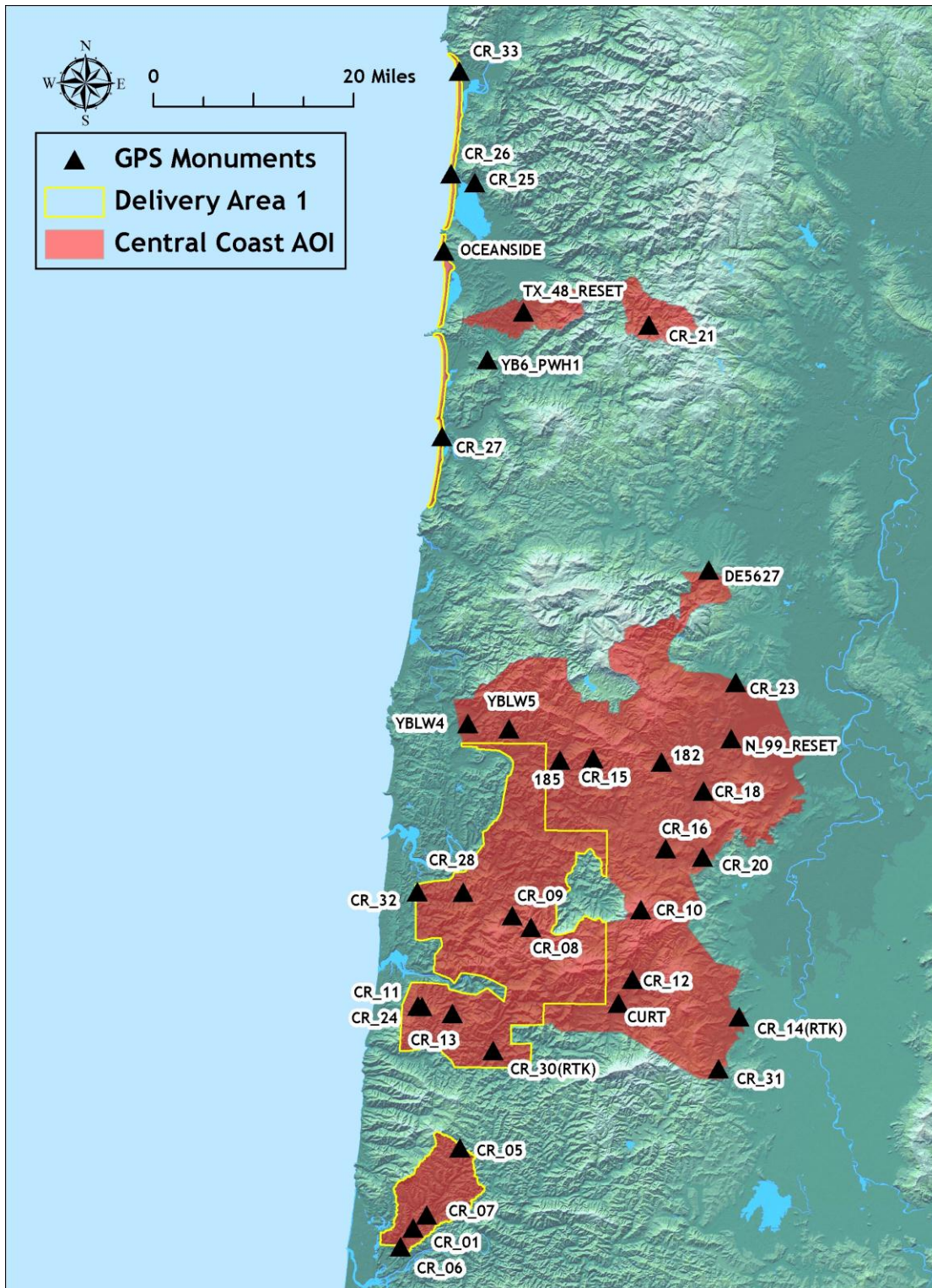
⁵ Federal Geographic Data Committee Draft Geospatial Positioning Accuracy Standards

Table 2.2. Base Station Surveyed Coordinates, (NAD83/NAVD88, OPUS corrected) used for kinematic post-processing of the aircraft GPS data for the Coast Range Study Area.

Base Stations ID	Datum NAD83 (HARN)		GRS80
	Latitude (North)	Longitude (West)	Ellipsoid Height (m)
CR_01*	440404.8076	1235847.192	194.951
CR_05*	440956.6989	1235452.967	250.368
CR_06*	440118.3549	1240155.983	-17.851
CR_07*	440255.7118	1240024.768	-12.3955
CR_08*	442905.9162	1234635.476	530.074
CR_09*	443004.889	1234851.199	327.815
CR_10	443043.8896	1233317.065	1097.26
CURT	442236.4556	1233556.124	65.6445
CR_11*	442211.6368	124010.5746	427.625
CR_12	442440.0164	1233415.525	91.524
CR_13*	44228.88445	1235940.267	407.438
CR_14(RTK)	442129.5604	1232121.04	70.086
CR_15	444345.9538	1233911.937	174.406
CR_16	443559.7537	1233018.36	163.796
CR_18	444101.682	1232544.149	96.249
YBLW4	444640.773	1235432.049	-1.5735
YBLW5	444616.7363	1234929.33	57.052
CR_20	443517.0506	1232548.787	129.216
N_99_RESET	444533.5114	1232226.115	53.356
182	444330.5838	1233054.095	107.472
185	444336.3118	1234316.866	55.0985
CR_21	452120.4142	1233249.378	293.325
CR_23	445026.6211	1232152.517	54.596
DE5627	450009.7508	1232516.946	117.568
TX_48_RESET	452224.0338	1234815.104	18.037
CR_24*	442133.1705	1235600.306	140.962
CR_25*	453333.4913	1235422.393	-17.9335
CR_26*	453418.3859	1235720.652	-16.8515
YB6_PWH1*	451813.25	1235235.049	246.589
CR_27*	451132.1119	1235802.547	-15.9355
CR_28*	443205.3535	1235450.488	267.105
CR_30(RTK)*	441824.5682	123512.6469	36.084
CR_31	441657.7733	1232346.943	289.828
CR_32*	443203.5027	1240023.201	84.253
OCEANSIDE*	452736.3845	1235805.915	14.39
CR_33*	454311.5389	1235627.377	-13.775

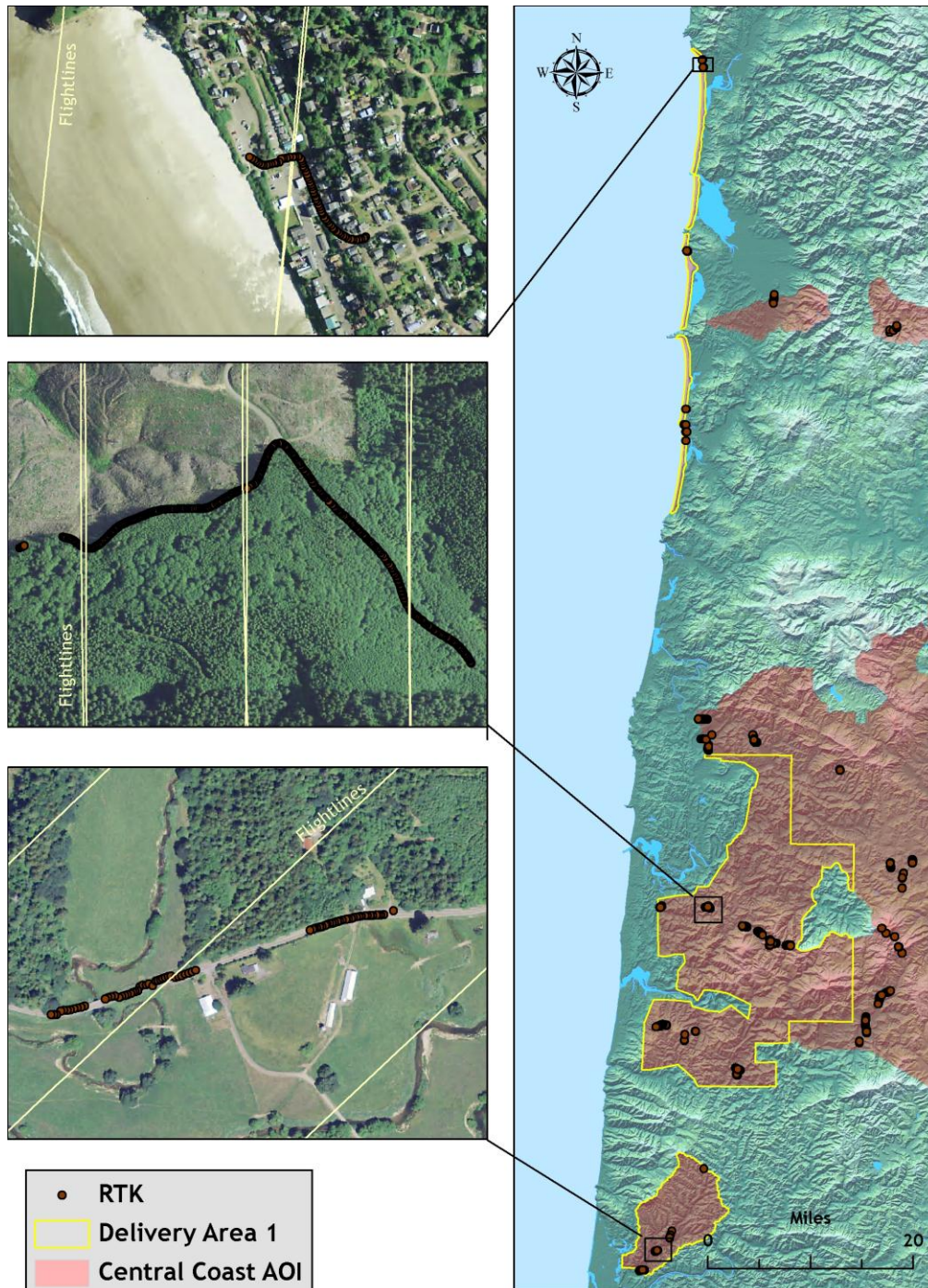
*Delivery Area 1 GPS monument

Figure 2.2. Base stations for the Central Coast Study Area.



For data delivered to date 970 RTK (Real-time kinematic) points were collected in the study area. Figures 2.3 shows detailed views of selected RTK locations for the area delivered to date.

Figure 2.3. Selected RTK point locations in the study area for delivery area; images are NAIP orthophotos.



3. Accuracy

3.1 Relative Accuracy

Relative Accuracy Calibration Results

Relative accuracy refers to the internal consistency of the data set and is measured as the divergence between points from different flightlines within an overlapping area. Divergence is most apparent when flightlines are opposing. When the LiDAR system is well calibrated the line to line divergence is low (<10 cm). Internal consistency is affected by system attitude offsets (pitch, roll and heading), mirror flex (scale), and GPS/IMU drift.

Relative accuracy statistics are based on the comparison of 910 flightlines and over 5 billion points. Relative accuracy is reported for the portion of the study area shown in **Figure 3.1** below.

- Project Average = 0.46 ft (0.11 m)
- Median Relative Accuracy = 0.34 ft (0.11 m)
- 1 σ Relative Accuracy = 0.40 ft (0.12 m)
- 2 σ Relative Accuracy = 0.65 ft (0.19 m)

Figure 3.1. *Relative Accuracy Covered Area.*

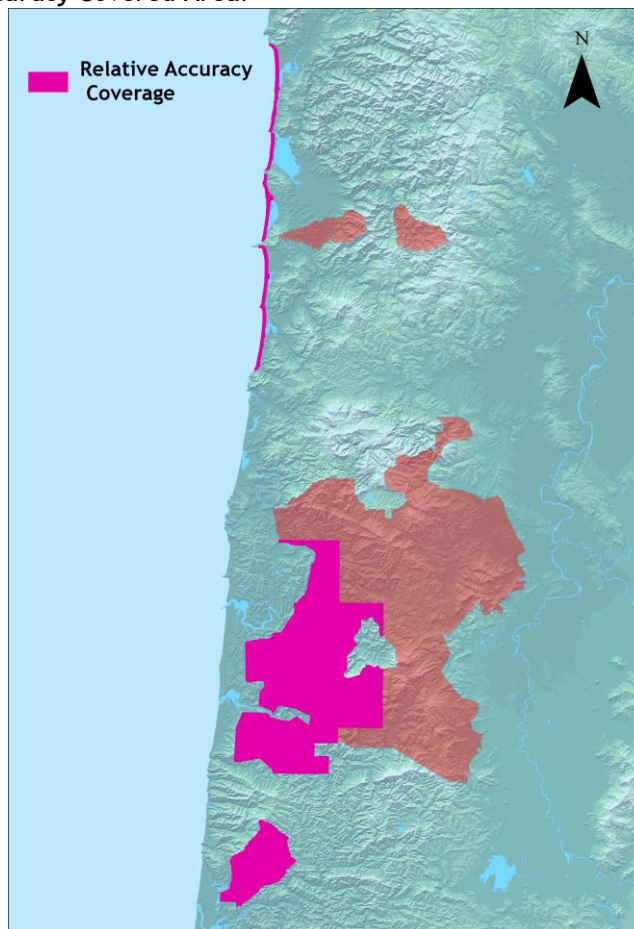


Figure 3.2. Statistical relative accuracies, non slope-adjusted.

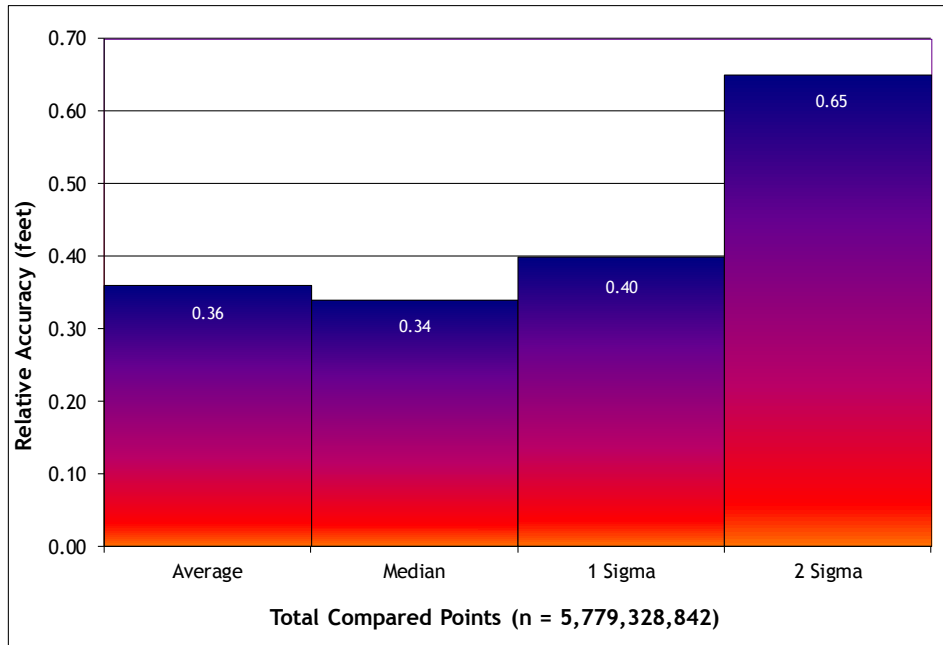
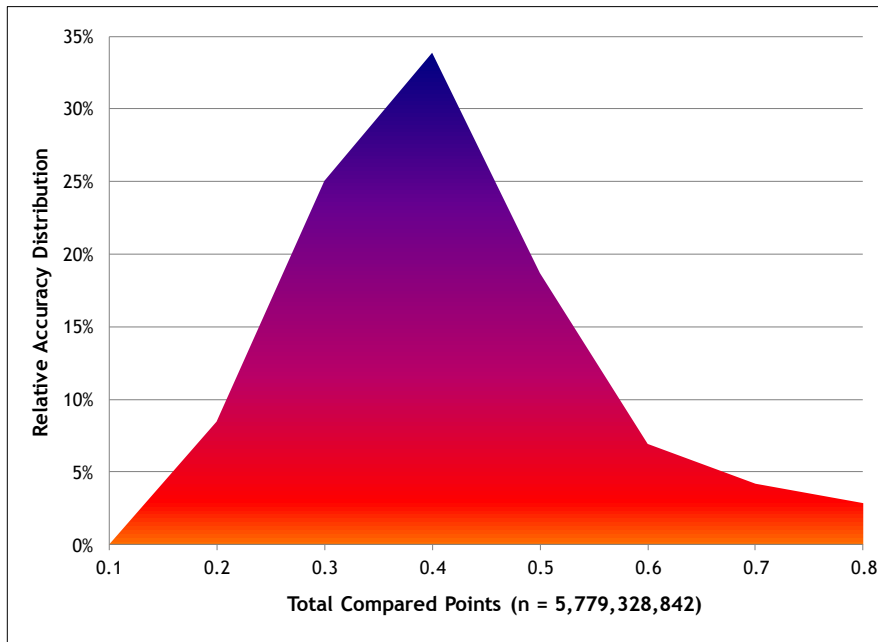


Figure 3.3. Percentage distribution of relative accuracies, non slope-adjusted.



3.2 Absolute Accuracy

Absolute accuracy compares known RTK ground survey points to the closest laser point. For the Central Coast Study Area, 970 RTK points were collected for data delivered to date. Absolute accuracy is reported for the portion of the study area shown in Figure 3.4 and reported in Table 3.1 below. Histogram and absolute deviation statistics are reported in Figures 3.5 and 3.6.

Table 3.1. Absolute Accuracy - Deviation between laser points and RTK survey points.

Sample Size (n): 970	
Root Mean Square Error (RMSE): 0.15 ft (0.05 m)	
Standard Deviations	Deviations
1 sigma (σ): 0.15 ft (0.05 m)	Minimum Δz : -0.54 ft (-0.16 m)
2 sigma (σ): 0.30 ft (0.09 m)	Maximum Δz : 0.44 ft (0.13 m)
	Average Δz : -0.00 ft (-0.00m)

Figure 3.4. Absolute Accuracy Covered Area.

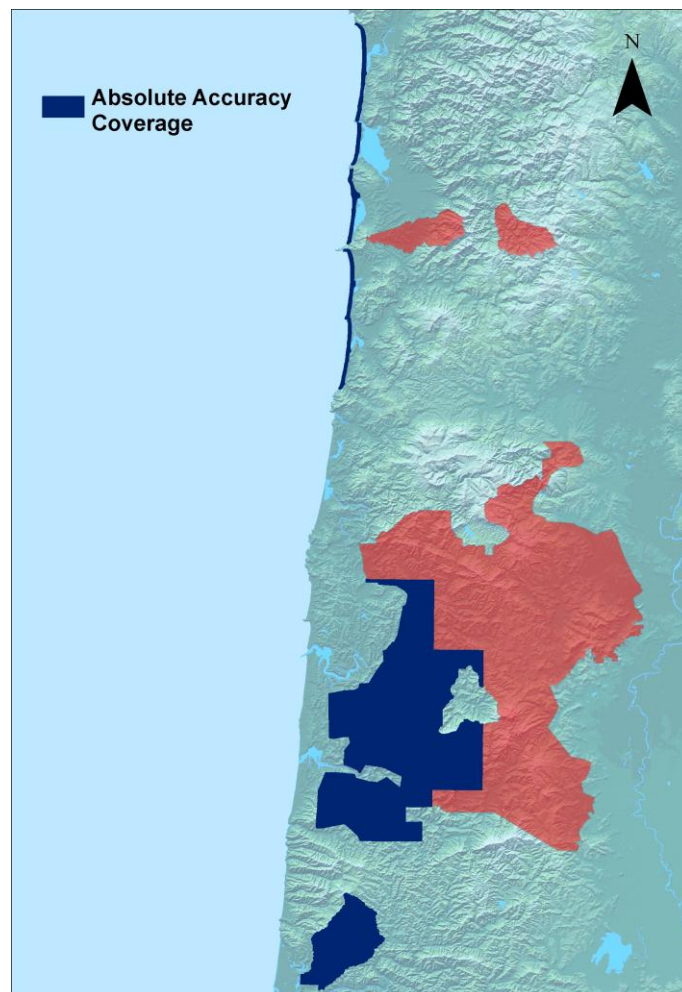


Figure 3.5. Central Coast Range Study Area histogram statistics

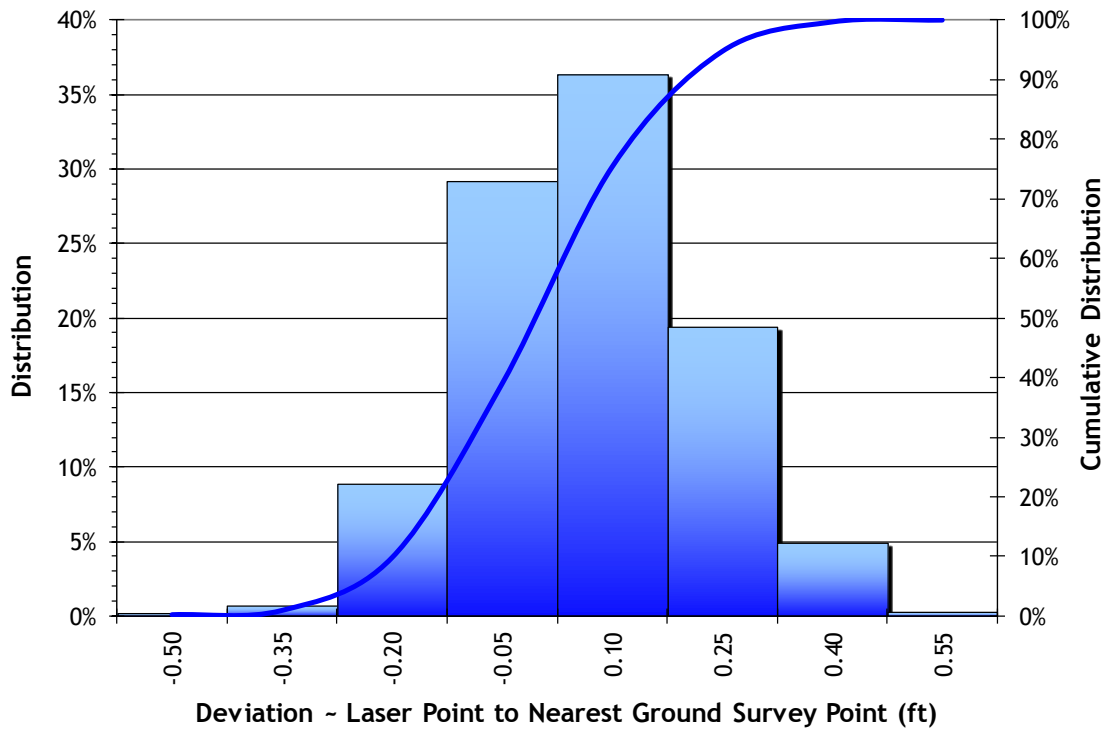
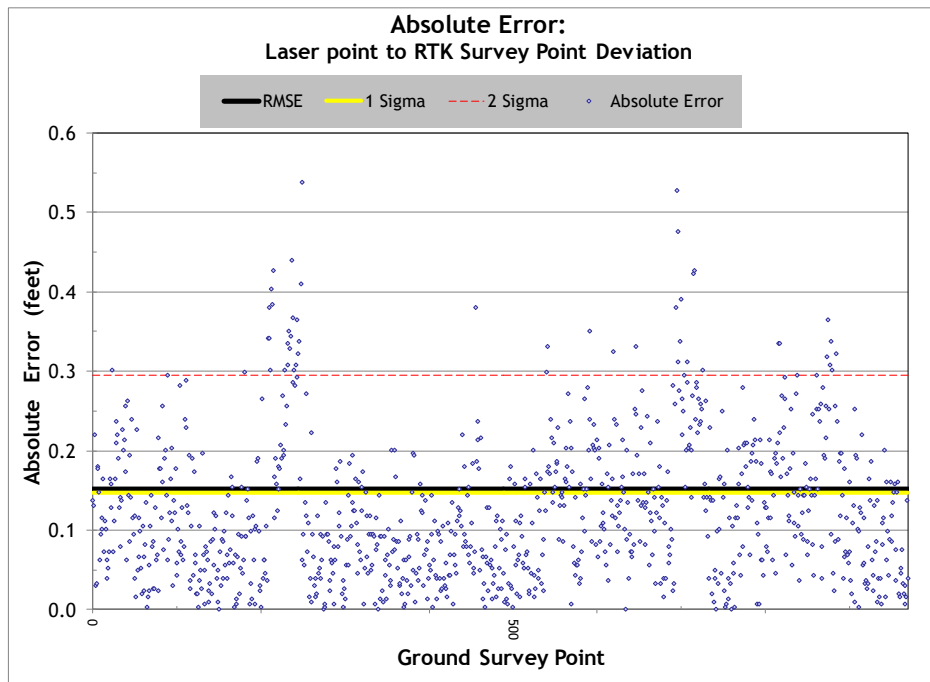


Figure 3.6. Central Coast Range Study Area point absolute deviation statistics.



4. Data Density/Resolution

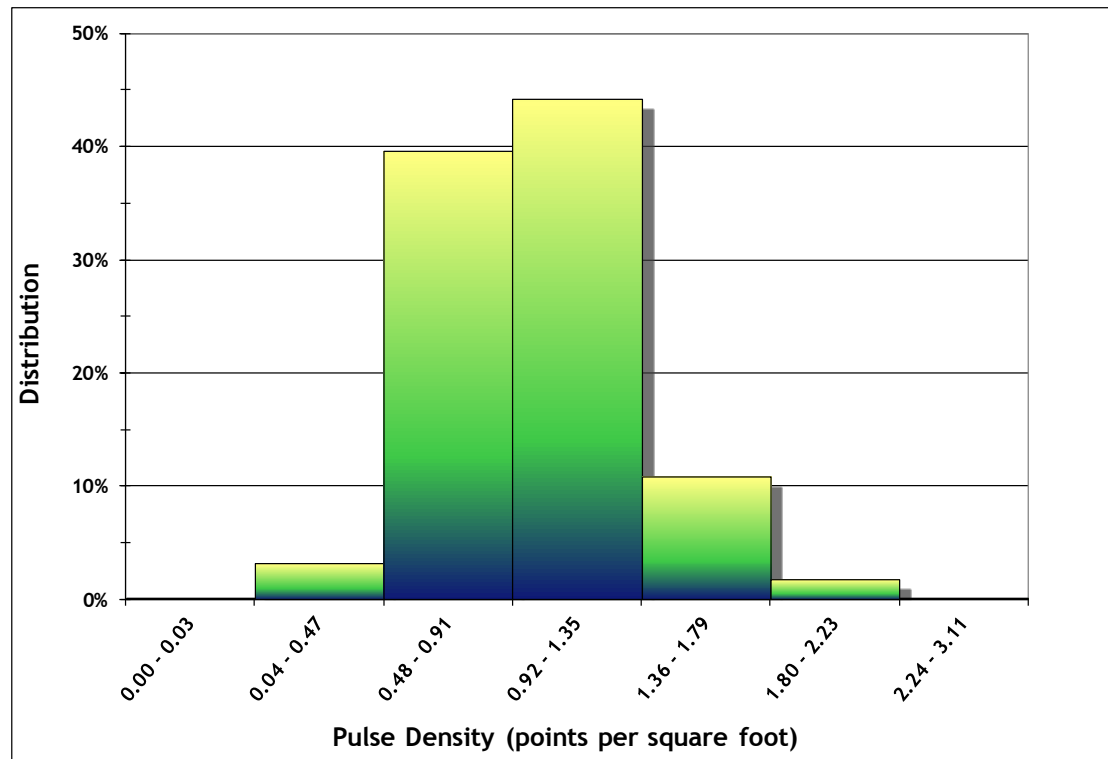
4.1 Density Statistics

Some types of surfaces (i.e. dense vegetation or water) may return fewer pulses than the laser originally emitted. Therefore, the delivered density can be less than the native density and vary according to terrain, land cover and water bodies. Density histograms and maps (Figures 4.1 - 4.4) have been calculated based on first return laser point density and ground-classified laser point density.

Table 4.1. Average density statistics for Central Coast Study Area data delivered to date.

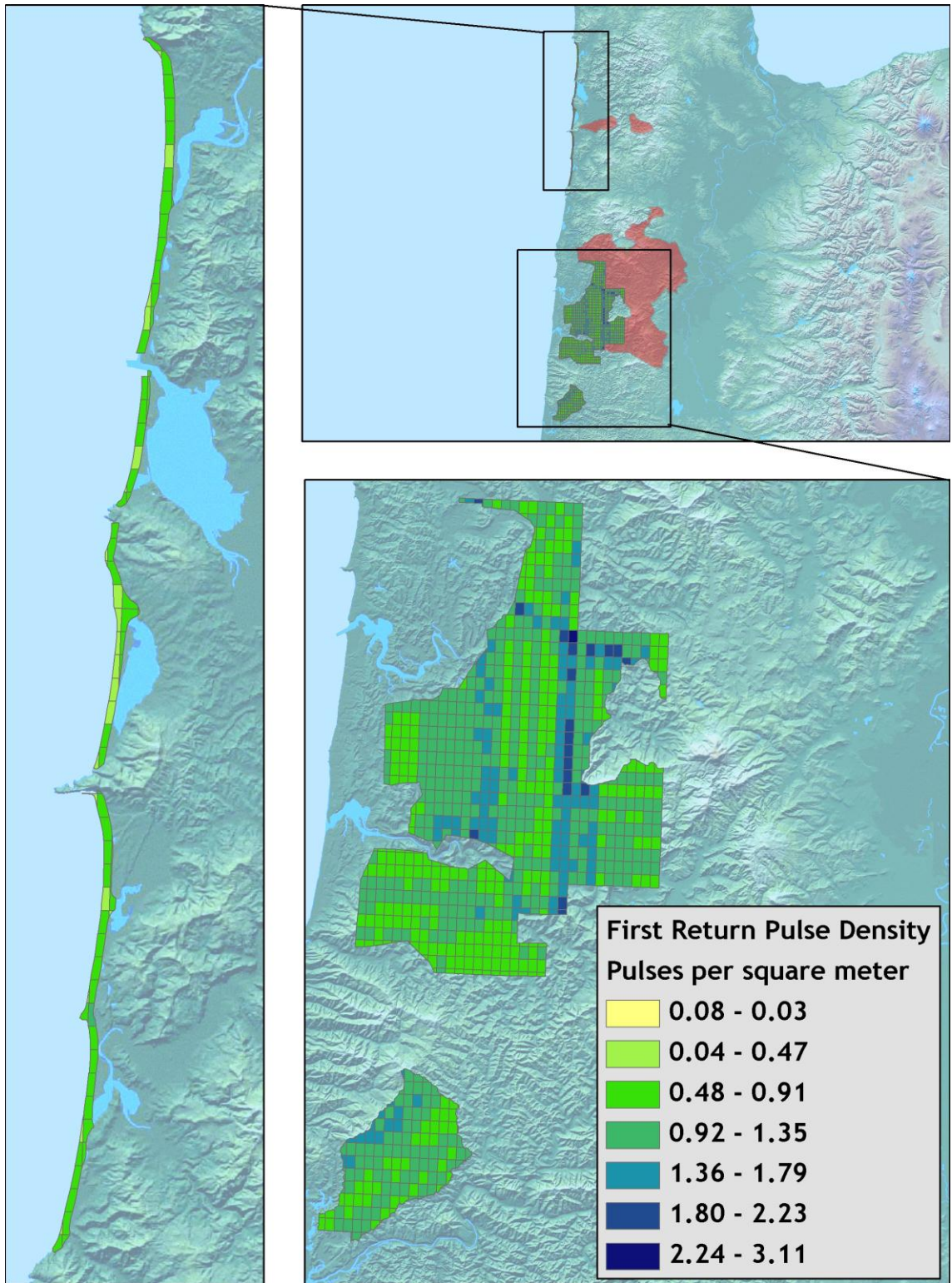
Average Pulse Density (per square ft)	Average Pulse Density (per square m)	Average Ground Density (per square ft)	Average Ground Density (per square m)
0.59	11.36	0.014	0.15

Figure 4.1. Histogram of first return laser point density for data delivered to date.



Pts ft ²	Pts m ²
0.00	0.00
0.05	0.54
0.10	1.08
0.15	1.61
0.20	2.15
0.25	2.69
0.30	3.23
0.35	3.77
0.40	4.31
0.45	4.84
0.50	5.38
0.55	5.92
0.60	6.46
0.65	7.00
0.70	7.53
0.75	8.07
0.80	8.61
0.85	9.15
0.90	9.69
0.95	10.23
1.00	10.76
1.05	11.30
1.10	11.84
1.15	12.38
1.20	12.92
1.25	13.45
1.30	13.99
1.35	14.53
1.40	15.07
1.45	15.61
1.50	16.15

Figure 4.2. First return laser point densities per 0.75' USGS Quad for data delivered to date.

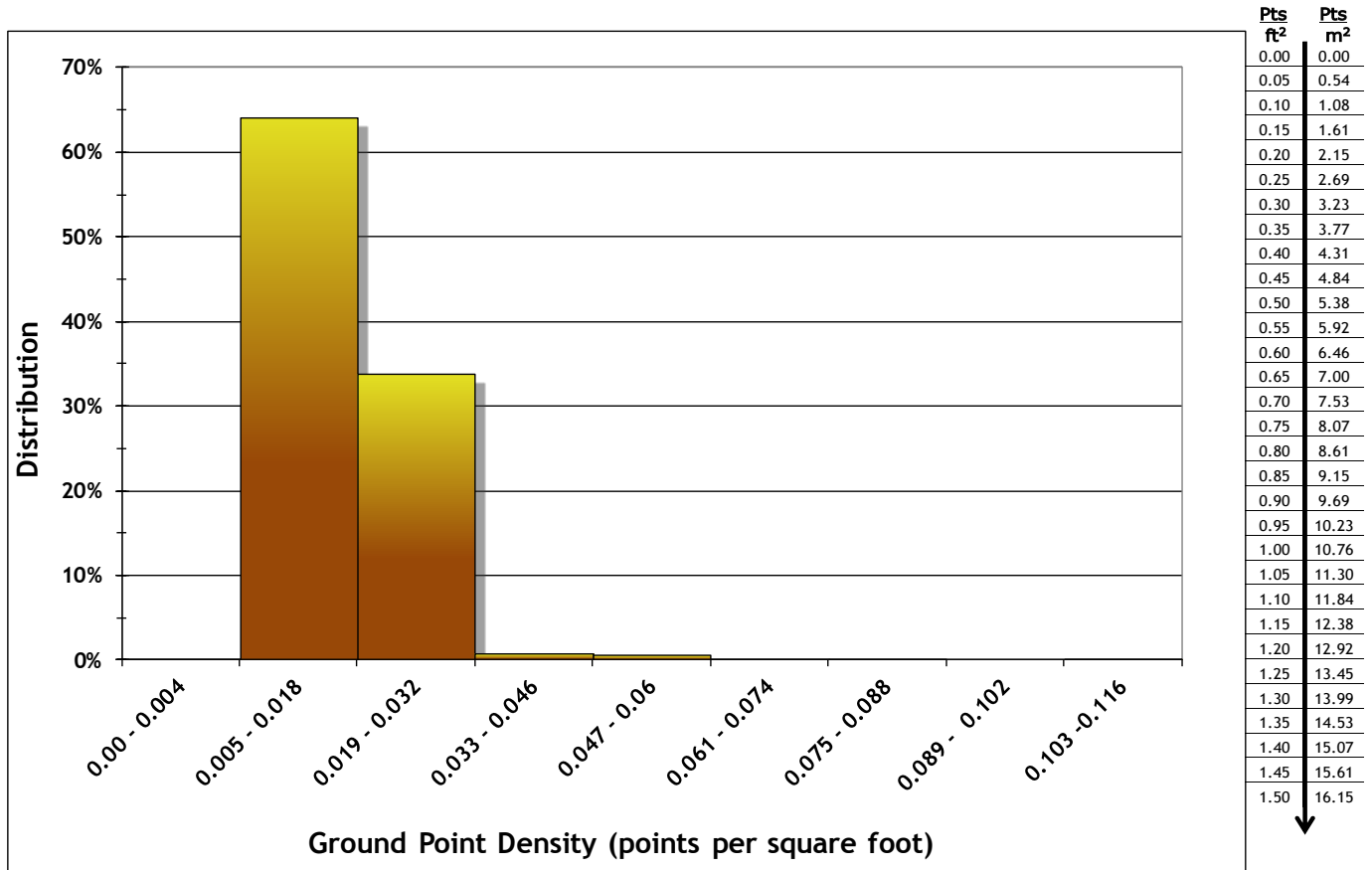


Pts ft ²	Pts m ²
0.00	0.00
0.05	0.54
0.10	1.08
0.15	1.61
0.20	2.15
0.25	2.69
0.30	3.23
0.35	3.77
0.40	4.31
0.45	4.84
0.50	5.38
0.55	5.92
0.60	6.46
0.65	7.00
0.70	7.53
0.75	8.07
0.80	8.61
0.85	9.15
0.90	9.69
0.95	10.23
1.00	10.76
1.05	11.30
1.10	11.84
1.15	12.38
1.20	12.92
1.25	13.45
1.30	13.99
1.35	14.53
1.40	15.07
1.45	15.61
1.50	16.15



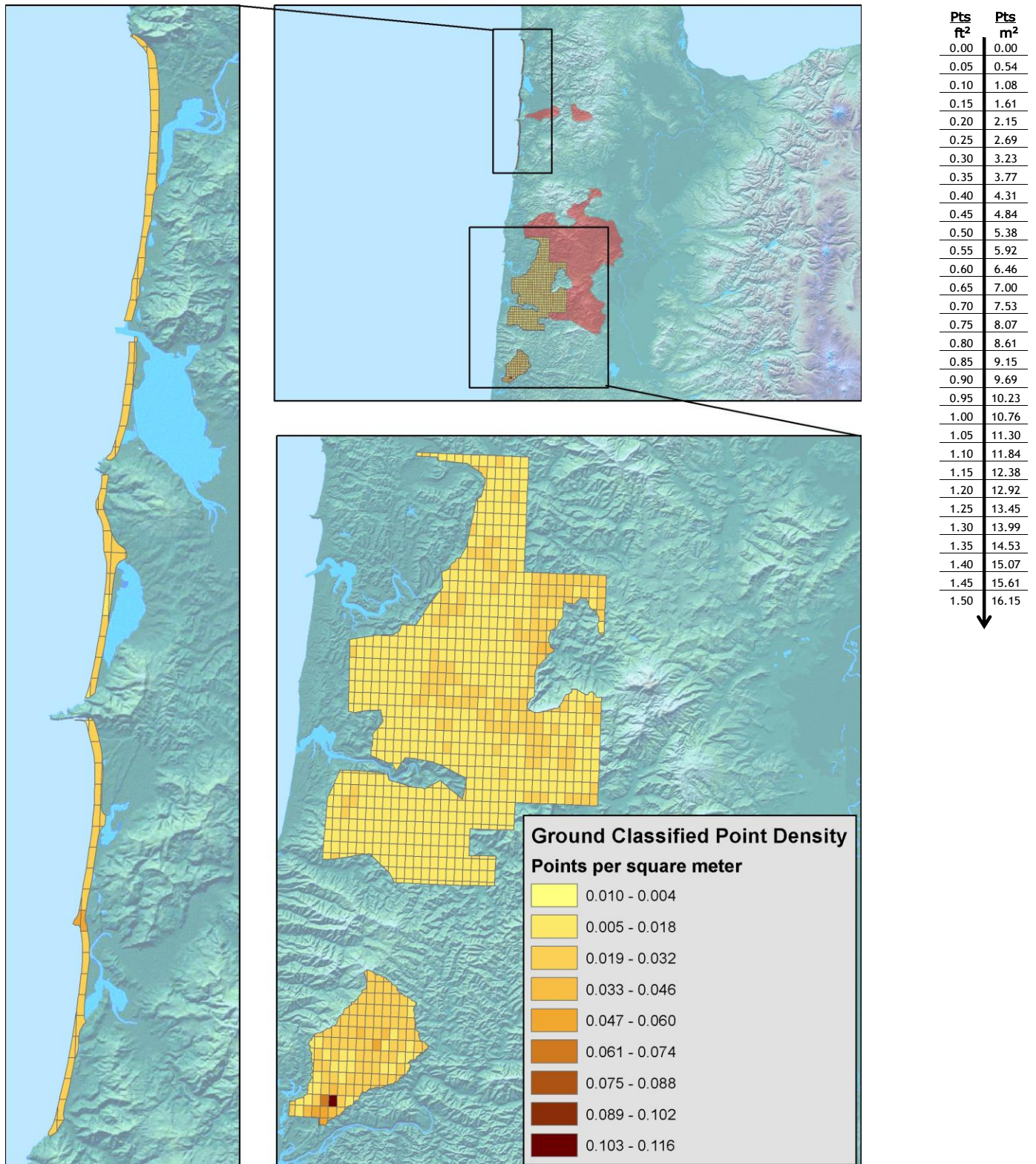
Ground classifications were derived from ground surface modeling. Classifications were performed by reseeded of the ground model where it was determined that the ground model failed, usually under dense vegetation and/or at breaks in terrain, steep slopes and at bin boundaries.

Figure 4.3. Histogram of ground-classified laser point density for data delivered to date.



Pts ft ²	Pts m ²
0.00	0.00
0.05	0.54
0.10	1.08
0.15	1.61
0.20	2.15
0.25	2.69
0.30	3.23
0.35	3.77
0.40	4.31
0.45	4.84
0.50	5.38
0.55	5.92
0.60	6.46
0.65	7.00
0.70	7.53
0.75	8.07
0.80	8.61
0.85	9.15
0.90	9.69
0.95	10.23
1.00	10.76
1.05	11.30
1.10	11.84
1.15	12.38
1.20	12.92
1.25	13.45
1.30	13.99
1.35	14.53
1.40	15.07
1.45	15.61
1.50	16.15

Figure 4.4. Ground-classified laser point density per 0.75' USGS Quad for data delivered to date.



[This page intentionally left blank]

5. Certifications

Watershed Sciences provided LiDAR services for the Central Coast study area as described in this report.

I, Mathew Boyd, have reviewed the attached report for completeness and hereby state that it is a complete and accurate report of this project.



Mathew Boyd
Principal
Watershed Sciences, Inc.

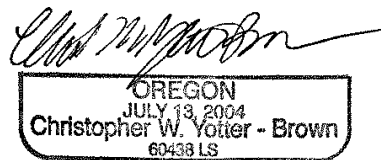
I, Christopher W. Yotter-Brown, being first dully sworn, say that as described in the Ground Survey subsection of the Acquisition section of this report was completed by me or under my direct supervision and was completed using commonly accepted standard practices. Accuracy statistics shown in the Accuracy Section have been reviewed by me to meet National Standard for Spatial Data Accuracy.



Christopher W. Yotter-Brown, PLS Oregon & Washington
Watershed Sciences, Inc
Portland, OR 97204



1/31/2012



RENEWAL DATE: 6/30/2012

6. Selected Imagery

Figure 6.1. *Neahkahnie Beach and Manzanita, Oregon. View to the South.*



Figure 6.2. Cape Lookout on Oregon coast, Tillamook County. View to the North.



Figure 6.3. *City of Logsden, Oregon and Highway 411, 15 miles NE of Newport, Oregon. View to the South.*

