

Classified Point Cloud

Deliverable 1 Summary

✓ General		
Folder:	F:\USGS_Eastern_San_Diego_County_LiDAR\point_cloud\tilecls	
Total # of Files:	1,710	(All Valid)
Total File Size:	420.0 GB	(450,990,124,320 bytes)

✓ Tile Sizes	
Median Tile Size:	5,000' x 5,000'
Minimum Tile Size:	2,839' x 1,343'
Maximum Tile Size:	5,000' x 5,000'
X Range:	6175000.00' to 6615000.00'
Y Range:	1798560.06' to 2129999.99'
Elevation Range:	-1345.42' to 7722.23'

✓ LAS Version And Point Record Formats	
v1.4, Point Record Format 6	1,710 of 1,710 Tiles

✓ Spatial Reference System		
Horizontal Projection	NAD83(2011) / California zone 6 (ftUS)	1,710 of 1,710 Tiles
Horizontal Datum	NAD83 (National Spatial Reference System 2011)	1,710 of 1,710 Tiles
Horizontal Units	US survey foot	1,710 of 1,710 Tiles
Vertical Datum	NAVD88 height (ftUS)	1,710 of 1,710 Tiles
Vertical Units	US survey foot	1,710 of 1,710 Tiles
Storage Method	WKT	1,710 of 1,710 Tiles

✓ GPS Time Type	
Adjusted	1,710 of 1,710 Tiles

✓ File Source ID Equals 0	
Yes	1,710 of 1,710 Tiles

✓ VLR/EVLR Reserved Equals 0	
Yes	1,710 of 1,710 Records

✓ Unnecessary Bytes At End Of File	
No	1,710 of 1,710 Tiles

✓ Legacy Point Count Check	
Zero	1,710 of 1,710 Tiles

✓ System Identifier	
Quantum Spatial	1,710 of 1,710 Tiles

✓ Generating Software	
LiDAR Suite	1,710 of 1,710 Tiles

Classified Point Cloud Continued...

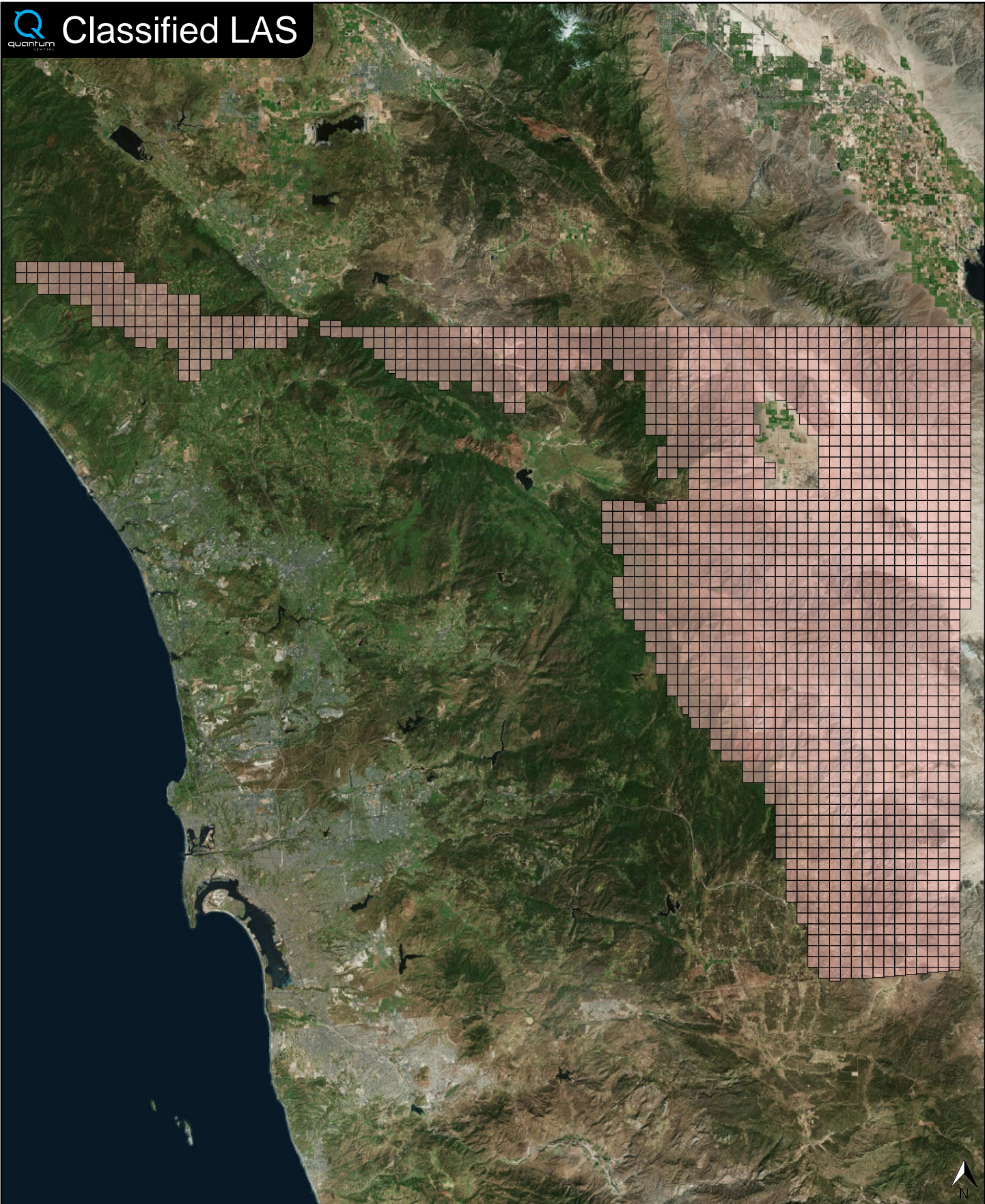
Deliverable 1 Summary

Point Classifications		
Class 1	18.07%	2,717,155,752 Points
Class 2	81.78%	12,294,374,250 Points
Class 6	0.08%	11,587,246 Points
Class 7	0.05%	8,201,320 Points
Class 9	0.00%	271,648 Points
Class 10	0.00%	5,479 Points
Class 17	0.00%	31,375 Points
Class 18	0.01%	1,290,947 Points

✓ Point Statistics	
Scan Angle:	-26 to 25
Intensity:	16 to 65408
First Date:	10/31/2016 9:31:08 PM
Last Date:	1/31/2017 7:32:02 PM



Classified LAS



Classified LAS Tiles (1,710)



N 33° 04' 31" W 116° 47' 55"



Scale 1:864

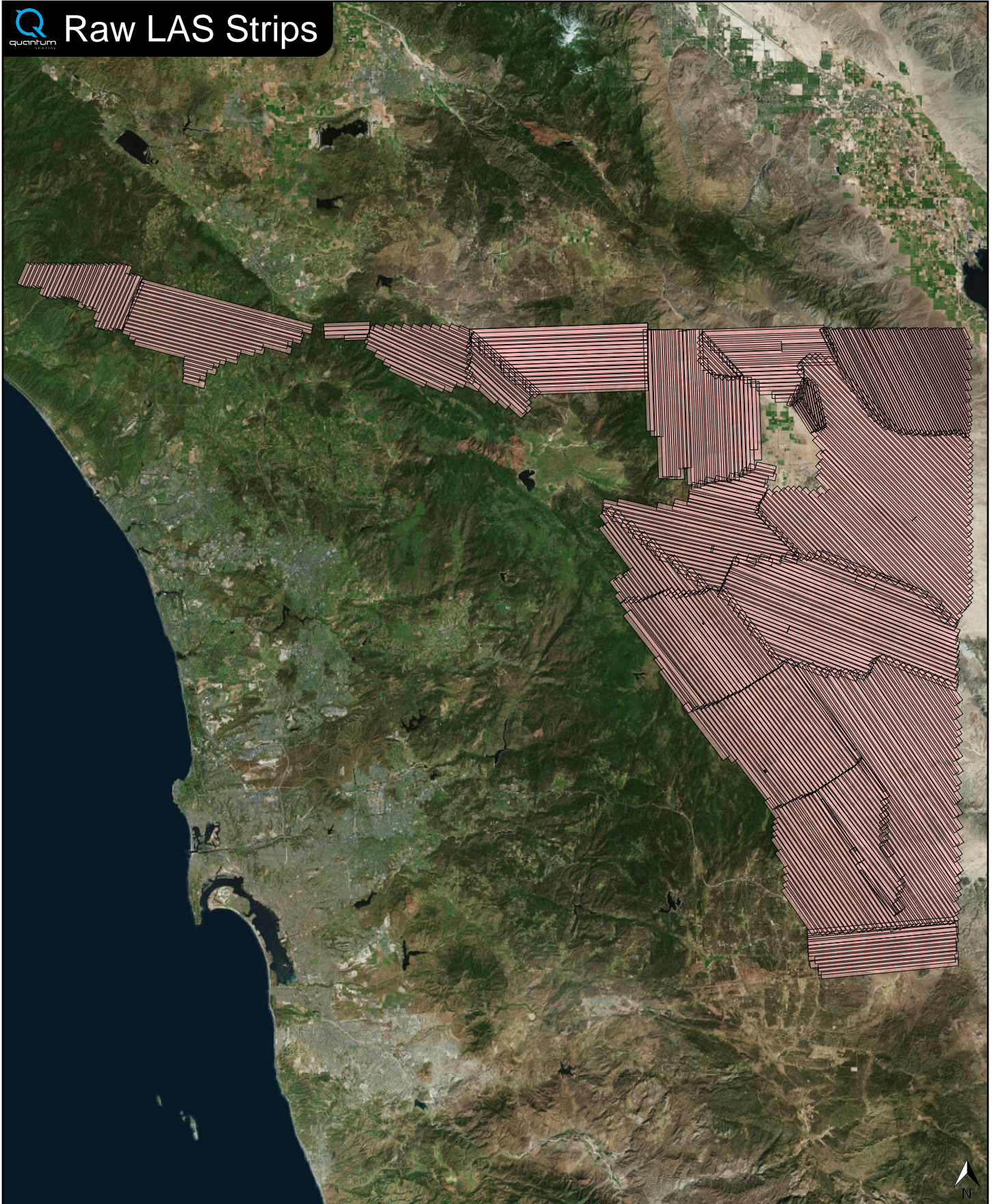
1 in = 11.44 mi



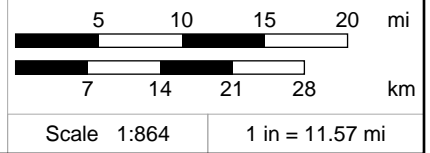
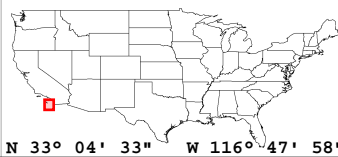
Raw LAS Flight Line Strips

Deliverable 2 Summary

✓ General		
Folder:	F:\USGS_Eastern_San_Diego_County_LiDAR\point_cloud\swathuncls	
Total # of Files:	524	(All Valid)
Total File Size:	420.0 GB	(450,988,332,274 bytes)
✓ Raw LAS Strips		
Elevation Range:	-1345' to 7722'	
✓ LAS Version And Point Record Formats		
v1.4, Point Record Format 6	524 of 524 Strips	
✓ Spatial Reference System		
Horizontal Projection	NAD83(2011) / California zone 6 (ftUS)	524 of 524 Strips
Horizontal Datum	NAD83 (National Spatial Reference System 2011)	524 of 524 Strips
Horizontal Units	US survey foot	524 of 524 Strips
Vertical Datum	NAVD88 height (ftUS)	524 of 524 Strips
Vertical Units	US survey foot	524 of 524 Strips
Storage Method	WKT	524 of 524 Strips
✓ GPS Time Type		
Adjusted	524 of 524 Strips	
✓ File Source IDs		
Equals Zero:	None	
All Unique:	Yes	
FLs:	101 - 119, 121 - 129, 131 - 188, 190 - 197, 199, 201 - 202, 204 - 207, 209 - 222, 225 - 233, 235 - 237, 239, 241 - 257, 260 - 264, 266 - 272, 274 - 279, 281 - 292, 294 - 303, 305 - 312, 314 - 323, 327 - 342, 344 - 358, 360 - 372, 374 - 376, 378 - 383, 387 - 399, 401 - 407, 409 - 410, 412, 414, 416 - 463, 465 - 471, 474 - 497, 499 - 517, 520 - 538, 540 - 543, 548 - 572, 579 - 585, 591 - 596, 599 - 605, 609 - 619, 621, 623 - 630, 643 - 648, 650 - 651, 653, 656 - 661, 665 - 666, 668 - 679, 682, 685 - 699, 701 - 705, 707 - 713, 715	
✓ VLR/EVLR Reserved Equals 0		
Yes	524 of 524 Records	
✓ Unnecessary Bytes At End Of File		
No	524 of 524 Strips	
✓ Legacy Point Count Check		
Zero	524 of 524 Strips	
✓ System Identifier		
Quantum Spatial	524 of 524 Strips	
✓ Generating Software		
LiDAR Suite	524 of 524 Strips	



FL Strips (524)

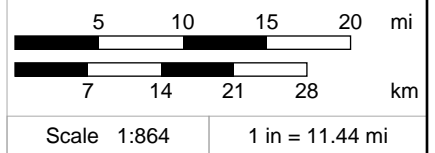
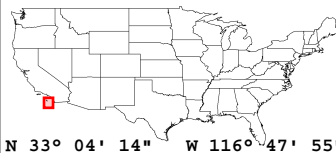
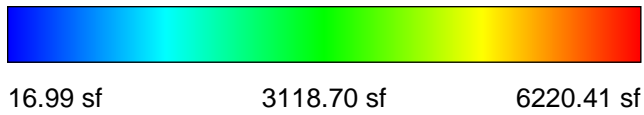
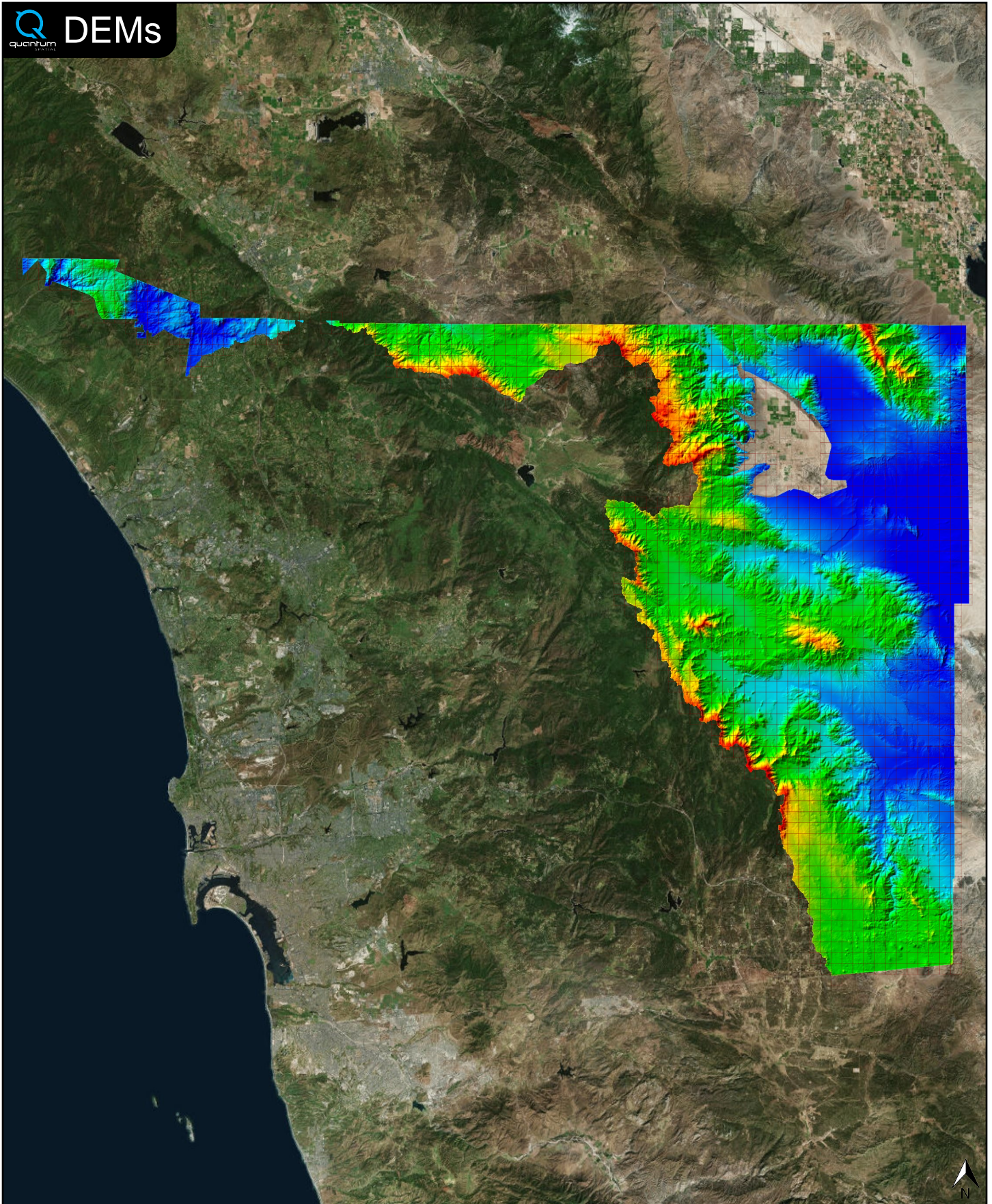


✓ General		
Folder:	F:\USGS_Eastern_San_Diego_County_LiDAR\bare_earth\be_rasters	
Total # of Files:	1,710	(All Valid)
Total File Size:	26.8 GB	(28,727,160,129 bytes)

✓ Tile Sizes		
Median Tile Size:	5,000' x 5,000'	
Minimum Tile Size:	5,000' x 5,000'	
Maximum Tile Size:	5,000' x 5,000'	
X Range:	6175000.00' to 6615000.00'	
Y Range:	1795000.00' to 2130000.00'	
Elevation Range:	13.52' to 6238.56'	

✓ Spatial Reference System		
Horizontal Projection	NAD_1983_2011_StatePlane_California_VI_FIPS_0406_Ft_US	1,710 of 1,710 Tiles
Horizontal Datum	D_NAD_1983_2011	1,710 of 1,710 Tiles
Horizontal Units	Foot_US	1,710 of 1,710 Tiles
Vertical Datum	NAVD88 height (ftUS)	1,710 of 1,710 Tiles
Vertical Units	Foot_US	1,710 of 1,710 Tiles

✓ Raster		
File Type:	IMG	1,710 of 1,710
Bands:	1	1,710 of 1,710
Grid Size (pixels):	2000 x 2000	1,710 of 1,710
Pixel Resolution:	2.50000000' x 2.50000000'	1,710 of 1,710
Pixel Type:	32-bit Floating Point	1,710 of 1,710
Compression:	None	1,710 of 1,710
No Data Value:	-32767	1,710 of 1,710



✓ General		
Folder:	F:\USGS_Eastern_San_Diego_County_LiDAR\other\intensity_images	
Total # of Files:	1,710	(All Valid)
Total File Size:	9.0 GB	(9,615,131,640 bytes)

✓ Tile Sizes		
Median Tile Size:	5,000' x 5,000'	
Minimum Tile Size:	5,000' x 5,000'	
Maximum Tile Size:	5,000' x 5,000'	
X Range:	6175000.00' to 6615000.00'	
Y Range:	1795000.00' to 2130000.00'	

✓ Spatial Reference System		
Horizontal Projection	NAD_1983_2011_StatePlane_California_VI_FIPS_0406_Ft_US	1,710 of 1,710 Tiles
Horizontal Datum	NAD_1983_2011	1,710 of 1,710 Tiles
Horizontal Units	Foot_US	1,710 of 1,710 Tiles
Vertical Datum	NAVD88 height (ftUS)	1,710 of 1,710 Tiles
Vertical Units	Foot_US	1,710 of 1,710 Tiles

✓ Raster		
File Type:	TIF	1,710 of 1,710
Bands:	1	1,710 of 1,710
Grid Size (pixels):	2000 x 2000	1,710 of 1,710
Pixel Resolution:	2.50000000' x 2.50000000'	1,710 of 1,710
Pixel Type:	8-bit Unsigned Integer (MINISBLACK)	1,710 of 1,710
Compression:	NONE	1,710 of 1,710
No Data Value:	NONE	1,710 of 1,710

